



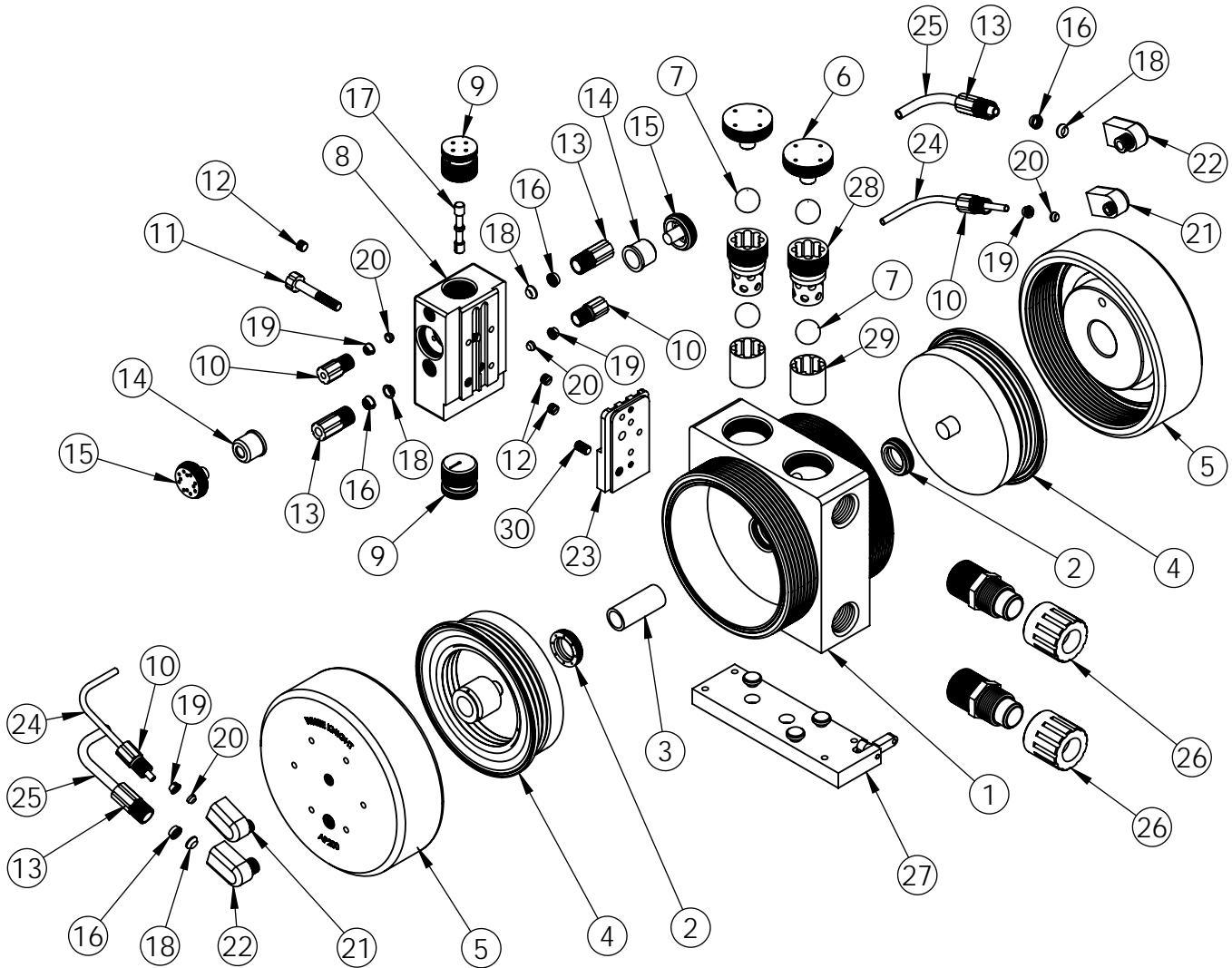
**WHITE KNIGHT®**

.....engineer approved™

# PUMP EXPLODED VIEW

## AP200 Exploded View

AP200 pumps are legacy models. We recommend users consider PSA060 pumps, which provide better performance, increased flow rates, higher pressure capabilities, improved reliability, extended pump life and warranty periods, as well as shorter lead times. Details: <https://wkfluidhandling.com/psa-series/>



### AP200 BILL OF MATERIALS

ITEM NO.	PART NUMBER	DESCRIPTION	QTY.	ITEM NO.	PART NUMBER	DESCRIPTION	QTY.
1	1125-TE-0004	PUMP BODY	1	16	6080-KF-0002	GRIPPER 3/8"	4
2	5143-TE-0002	SHAFT SEAL	2	17	6560-CE-0002	SHUTTLE SPOOL	1
3	5144-PF-0003	SHAFT	1	18	6080-TE-0002	FERRULE 3/8"	4
4	14300-PF-0003	BELLOWS ASSEMBLY	2	19	6080-KF-0001	GRIPPER 1/4"	4
5	2127-BP-0005	PUMP HEAD	2	20	6080-TE-0001	FERRULE 1/4"	4
6	4140-TE-0003	TOP CHECK PLUG	2	21	6020-BP-0001	1/4" NPT x 1/4" GRIPPER ELBOW	2
7	4100-TE-0003	CHECK BALL	4	22	6020-BP-0002	3/8" NPT x 3/8" GRIPPER ELBOW	2
8	14400-BP-0006	SHUTTLE BODY AND SLEEVE	1	23	6520-BP-0002	SHUTTLE ADAPTER PLATE	1
9	6530-TE-0002	SHUTTLE END PLUG	2	24	10071-PF-0008	THICK-WALL TUBING, 1/4"	2
10	6070-BP-0005	1/4" MALE GRIPPER NUT	4	25	10071-PF-0010	TUBING, 3/8"	2
11	10010-BP-0005	SHUTTLE SET SCREW	1	26	14510-NP-0006	FLARE ASSEMBLY	2
12	10040-TE-0002	PLUG, NPT, 1/8"	3	27	14200-NP-0003	BASE PLATE ASSEMBLY	1
13	6070-BP-0006	3/8" MALE GRIPPER NUT	4	28	4142-TE-0004	TOP CHECK CAGE	2
14	6140-TE-0002	WHISPER MUFFLER	2	29	4135-TE-0003	BOTTOM CHECK SEAT	2
15	6150-BP-0002	WHISPER MUFFLER CAP	2	30	10010-TE-0008	ADAPTER PLATE SCREW	1

<https://wkfluidhandling.com/ap-series/>

