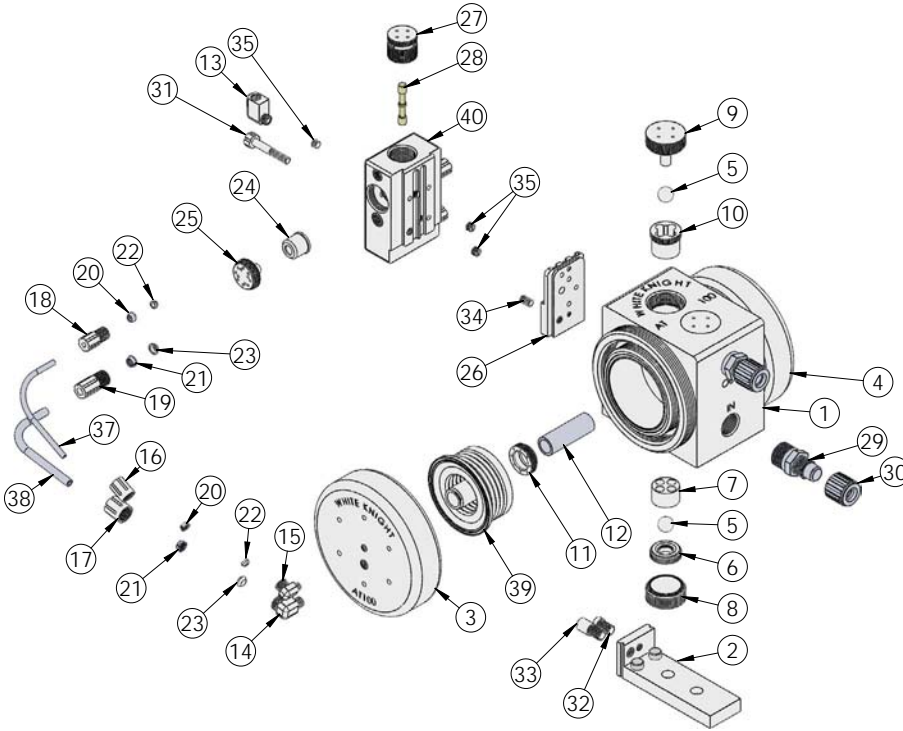




AT100 Exploded View

AT100 pumps are legacy models. We recommend users consider PSU060 pumps, which provide better performance, increased flow rates, higher pressure capabilities, improved reliability, extended pump life and warranty periods, as well as shorter lead times. Details: <https://wkfluidhandling.com/psu-series/>



AT100 BILL OF MATERIALS			
ITEM NO.	PART NUMBER	DESCRIPTION	QTY.
1	1125-TE-0007	BODY-10GPM	1
2	1420-TE-0001	10 GPM ATX Base Plate Assembly	1
3	2127-TE-0008	RIGHT HEAD-10GPM	1
4	2127-TE-0054	LEFT HEAD-10GPM	1
5	4100-TE-0002	CHECK BALL 3/4"	4
6	4135-TE-0008	BOTTOM CHECK SEAT- 10GPM REGULAR	2
7	4137-TE-0002	BOTTOM CHECK CAGE-10GPM	2
8	4139-TE-0005	BOTTOM CHECK PLUG-U-SERIES, 60L	2
9	4140-TE-0006	TOP CHECK PLUG-10GPM	2
10	4142-TE-0007	TOP CHECK SEAT-10GPM REGULAR	2
11	5143-TE-0004	SHAFT SEAL-10GPM	2
12	5144-PF-0006	SHAFT-10GPM	1
13	6010-TE-0006	1/4" NPT x 1/4" FNPT ELBOW	1
14	6020-TE-0004	1/4" NPT x 3/8" GRIPPER ELBOW	2
15	6030-TE-0001	1/8" NPT X 1/4" GRIPPER ELBOW	2
16	6070-TE-0001	1/4" GRIPPER AIR NUT	2
17	6070-TE-0002	3/8" FEMALE GRIPPER NUT	2
18	6070-TE-0004	1/4" MALE GRIPPER NUT	2
19	6070-TE-0005	3/8" MALE GRIPPER NUT	2
20	6080-KF-0001	1/4" GRIPPER	4
21	6080-KF-0002	3/8" GRIPPER	4
22	6080-TE-0001	1/4" FERRULE	4
23	6080-TE-0002	3/8" FERRULE	4
24	6140-TE-0002	10 gpm Whisper Muffler	2
25	6150-TE-0002	WHISPER MUFFLER CAP- 10GPM	2
26	6520-TE-0002	SHUTTLE ADAPTER PLATE-10GPM	1
27	6530-TE-0002	Shuttle End Plug 10 gpm	2
28	6560-CE-0002	10 gpm Spool	1
29	7200-PF-0006	BODY, FLARETEK® 3/4" (10 gpm)	2
30	7210-PF-0004	3/4" Flaretek NUT (PF-A)	2
31	10010-TE-0005	SHUTTLE SET SCREW-10 GPM	1
32	10010-TE-0006	BASE PLATE SCREW	1
33	10010-TE-0007	BASE PLATE SCREW	1
34	10010-TE-0008	ADAPTER PLATE SCREW	1
35	10040-TE-0002	1/8" NPT Plug	3
36	10040-TE-0003	NPT PLUG - 1/4"	2
37	10071-PF-0008	THICK-WALL TUBING, 1/4"	2
38	10071-PF-0010	3/8" TUBING	2
39	14300-PF-0006	BELLOWS ASSEMBLY	2
40	14400-TE-0004	SHUTTLE BODY AND SLEEVE	1

<https://wkfluidhandling.com/at-series/>

