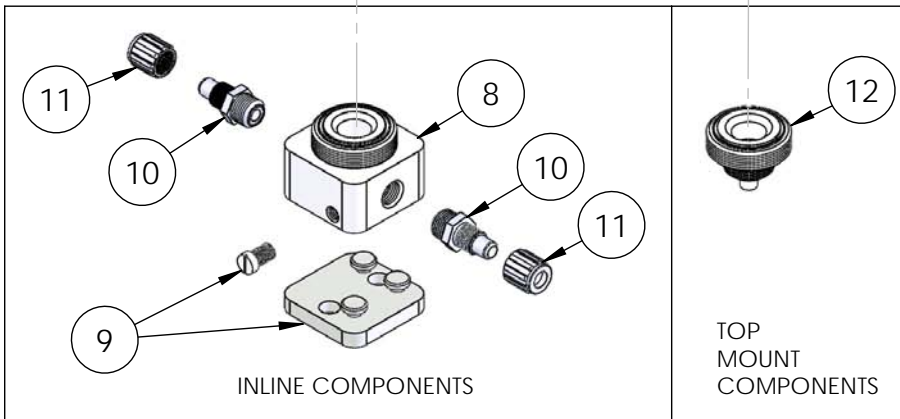
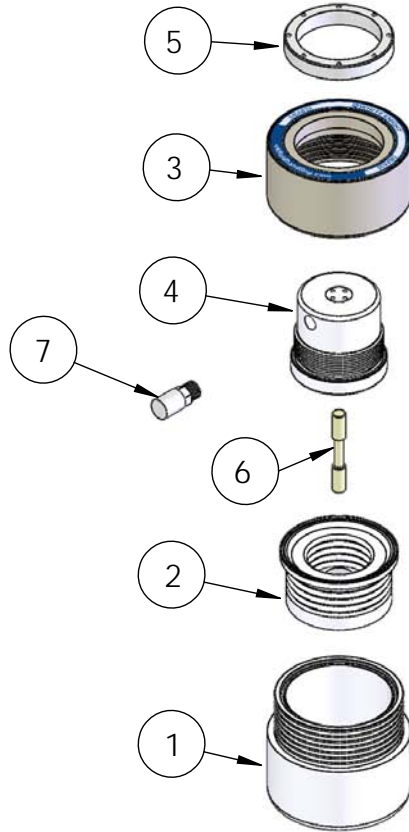


DBA030 Exploded View



DBA030 Bill of Materials			
Item	Part	Description	Qty
1	9400-TE-0001	Body	1
2	14300-MP-0032	Bellows Assembly	1
3	2127-EP-0036	Head	1
4	14860-XX-0001	Pd Air Motor Assembly	1
5	9300-NP-0001	Ring, Retaining	1
6	6560-CE-0005	Spool	1
7	6110-PP-0004	Muffer	1
8	9100-TE-0008	Inline Base	1
9	14200-NP-0009	Baseplate Assembly	1
10	7200-PF-0003	Body, Flaretek®, 1/2"	2
11	7210-PF-0003	Nut, Flaretek®, 1/2"	2
12	9200-TE-0008	Adapter, Top Mount, 030	1

Fittings (Type, Size, Option)		Assemblies	Body Inlet Only (Nut not included)
Flaretek Compatible	1/4 in. F04	14510-PF-0016	7200-PF-0001
	3/8 in. F06	14510-PF-0001	7200-PF-0002
	1/2 in. F08	14510-PF-0002	7200-PF-0003
	3/4 in. F12	14510-PF-0003	7200-PF-0004
Tube Out	3/8 in. T06	7120-PF-0001	
	1/2 in. T08	7120-PF-0002	
	3/4 in. T12	7120-PF-0003	
Weldable	1/2 in. W08	7300-PF-0001	
	3/4 in. W12	7300-PF-0002	
Pillar S-300	1/4 in. P04	14530-PF-0025	7400-TE-0031
	3/8 in. P06	14530-PF-0012	7400-TE-0023
	1/2 in. P08	14530-PF-0001	7400-TE-0001
	3/4 in. P12	14530-PF-0002	7400-TE-0002
FNPT	1/4 in. N04	7100-TE-0001	
	3/8 in. N06	7100-TE-0002	
	1/2 in. N08	7100-TE-0003	
	3/4 in. N12	7100-TE-0007	
Synchro-Flare	3/8 in. S06	14520-TE-0009	7010-TE-0001
	1/2 in. S08	14520-TE-0001	7010-TE-0003
	3/4 in. S12	14520-TE-0002	7010-TE-0002
PrimeLock	1/4 in. L04	14570-PF-0013	7800-TE-0013
	3/8 in. L06	14570-PF-0014	7800-TE-0014
	1/2 in. L08	14570-PF-0001	7800-TE-0001
	3/4 in. L12	14570-PF-0002	7800-TE-0002
Plugged	B00	7130-TE-0001	