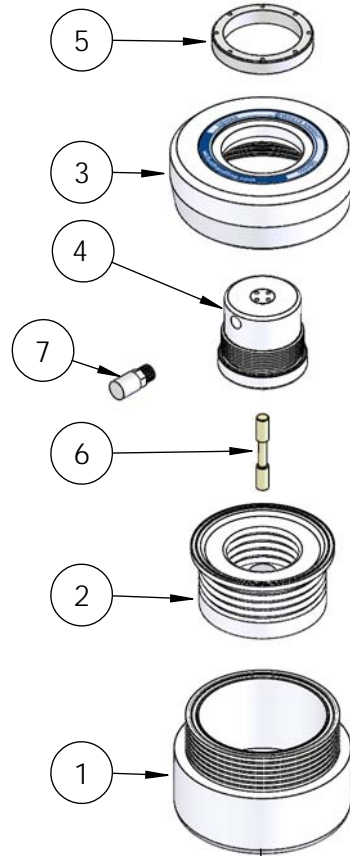


DBH060 Exploded View



| DBH060 BILL OF MATERIALS | | | |
|--------------------------|---------------|-------------------------|-----|
| Item | Part | Description | Qty |
| 1 | 9400-TE-0002 | Body, Dampener | 1 |
| 2 | 14300-MP-0033 | Bellows Assembly | 1 |
| 3 | 2127-TE-0061 | Head, Dbh060 | 1 |
| 4 | 14860-XX-0001 | Pd Air Motor Assembly | 1 |
| 5 | 9300-TE-0006 | Ring, Retaining | 1 |
| 6 | 6560-CE-0005 | Spool | 1 |
| 7 | 6110-PP-0004 | Muffler | 1 |
| 8 | 9100-TE-0009 | Base, Inline, 060 | 1 |
| 9 | 14200-NP-0009 | Baseplate Assembly | 1 |
| 10 | 7400-TE-0004 | Body, S-300®, 3/4" | 2 |
| 11 | 7400-PF-0002 | Insert, S-300® | 2 |
| 12 | 7400-PF-0006 | Nut, S-300®, 3/4" | 2 |
| 13 | 9200-TE-0009 | Adapter, Top Mount, 060 | 1 |

| Fittings (Type, Size, Option) | | | Assemblies | Body Inlet Only (Nut not included) |
|-------------------------------|-----------|-----|---------------|------------------------------------|
| Flaretek Compatible | 1/2 in. | F08 | 14510-PF-0004 | 7200-PF-0005 |
| | 3/4 in. | F12 | 14510-PF-0005 | 7200-PF-0006 |
| | 1 in. | F16 | 14510-PF-0006 | 7200-PF-0007 |
| | 1-1/4 in. | F20 | 14510-PF-0007 | 7200-PF-0008 |
| Tube Out | 1/2 in. | T08 | 7120-PF-0004 | |
| | 3/4 in. | T12 | 7120-PF-0005 | |
| | 1 in. | T16 | 7120-PF-0006 | |
| | 1-1/4 in. | T20 | 7120-PF-0011 | |
| Weldable | 3/4 in. | W12 | 7300-PF-0003 | |
| | 1 in. | W16 | 7300-PF-0004 | |
| Pillar S-300 | 3/8 in. | P06 | 14530-PF-0028 | 7400-TE-0036 |
| | 1/2 in. | P08 | 14530-PF-0003 | 7400-TE-0003 |
| | 3/4 in. | P12 | 14530-PF-0004 | 7400-TE-0004 |
| | 1 in. | P16 | 14530-PF-0005 | 7400-TE-0005 |
| | 1-1/4 in. | P20 | 14530-PF-0009 | 7400-TE-0012 |
| FNPT | 1/2 in. | N08 | 7100-TE-0006 | |
| | 3/4 in. | N12 | 7100-TE-0004 | |
| | 1 in. | N16 | 7100-TE-0008 | |
| Synchro-Flare | 1/2 in. | S08 | 14520-TE-0003 | 7010-TE-0005 |
| | 3/4 in. | S12 | 14520-TE-0004 | 7010-TE-0004 |
| | 1 in. | S16 | 14520-TE-0006 | 7010-TE-0006 |
| PrimeLock | 1/2 in. | L08 | 14570-PF-0003 | 7800-TE-0003 |
| | 3/4 in. | L12 | 14570-PF-0004 | 7800-TE-0004 |
| | 1 in. | L16 | 14570-PF-0005 | 7800-TE-0005 |
| Plugged | | B00 | 7130-TE-0003 | |

