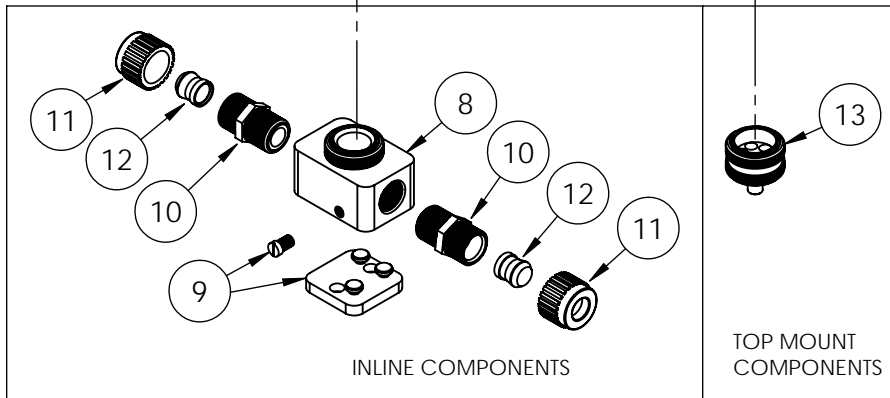
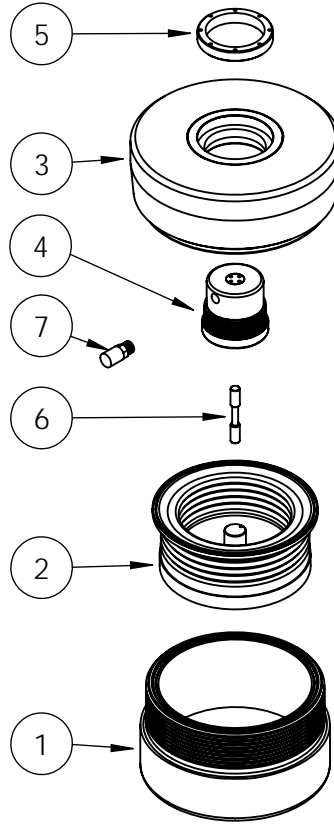


DBH140 Exploded View



DBH140 BILL OF MATERIALS			
Item	Part	Description	Qty
1	9400-TE-0003	Body, Dampener	1
2	14300-MP-0039	Bellows Assembly	1
3	2127-TE-0062	Head, Dbh140	1
4	14860-XX-0001	Pd Air Motor Assembly	1
5	9300-TE-0006	Ring, Retaining	1
6	6560-CE-0005	Spool	1
7	6110-PP-0004	Muffler	1
8	9100-TE-0010	Base, Inline, 140	1
9	14200-NP-0009	Baseplate Assembly	1
10	7400-TE-0007	Fitting S-300® Body 1" 140	2
11	7400-PF-0007	Nut S-300® 1"	2
12	7400-PF-0003	Insert S-300® 1"	2
13	9200-TE-0010	Adapler, Top Mount, 140	1

Fittings (Type, Size, Option)			Assemblies	Body Inlet Only (Nut not included)
Flaretek Compatible	1/2 in.	F08	14510-PF-0011	7200-PF-0015
	3/4 in.	F12	14510-PF-0008	7200-PF-0009
	1 in.	F16	14510-PF-0009	7200-PF-0010
	1-1/4 in.	F20	14510-PF-0010	7200-PF-0011
Tube Out	3/4 in.	T12	7120-PF-0007	
	1 in.	T16	7120-PF-0008	
	1-1/4 in.	T20	7120-PF-0009	
	1-1/2 in.	T24	7120-PF-0010	
Weldable	3/4 in.	W12	7300-PF-0005	
	1 in.	W16	7300-PF-0006	
Pillar S-300	1/2 in.	P08	14530-PF-0011	7400-TE-0019
	3/4 in.	P12	14530-PF-0006	7400-TE-0006
	1 in.	P16	14530-PF-0007	7400-TE-0007
	1-1/4 in.	P20	14530-PF-0008	7400-TE-0008
	1-1/2 in.	P24	14530-PF-0026	7400-TE-0035
FNPT	3/4 in.	N12	7100-TE-0009	
	1 in.	N16	7100-TE-0005	
	1-1/4 in.	N20	7100-TE-0010	
Synchro-Flare	1/2 in.	S08	TBD	7010-TE-0008
	3/4 in.	S12	14520-TE-0008	7010-TE-0007
	1 in.	S16	14520-TE-0007	7010-TE-0009
PrimeLock	3/4 in.	L12	14570-PF-0006	7800-TE-0006
	1 in.	L16	14570-PF-0007	7800-TE-0007
	1-1/4 in.	L20	TBD	7800-TE-0008
Plugged		B00	7130-TE-0005	7130-TE-0005