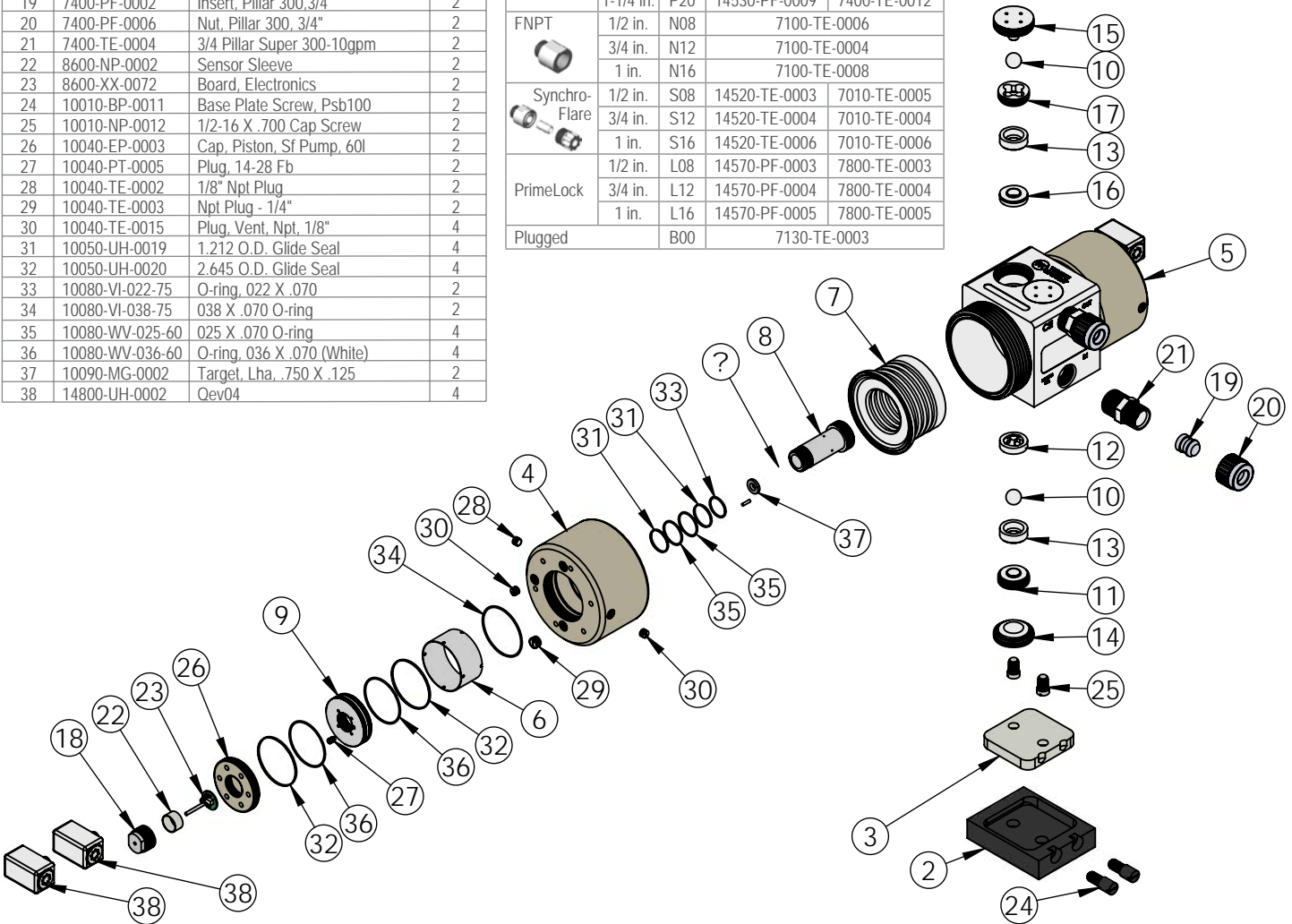




LHA030 Exploded View

Item	Part	Description	Qty
1	1125-TE-0030	Body, Sf Pump, 60l	1
2	1146-BP-0007	Base Plate, Quick Change, Lha	1
3	1146-NP-0041	Adapter Plate Lha	1
4	2127-EP-0041	Head, Right, Sf Pump, 60l	1
5	2127-EP-0042	Head, Left, Sf Pump, 60l	1
6	2128-PT-0001	Sleeve, Lha	2
7	3130-MP-045	Bellows, Sf Pump, 60l	2
8	3135-PT-0006	Piston, Part A, Sf Pump	2
9	3135-PT-0007	Piston, Part B, Sf Pump	2
10	4100-MP-0001	Check Ball-3/4"	4
11	4135-MP-0014	Bottom Check Seat, Lower	2
12	4137-TE-0010	Bottom Check Cage, 10 Gpm	2
13	4137-TE-0011	Middle Check Cage, 10 Gpm	4
14	4139-TE-0012	Plug, Bottom Check, Sf Pump, 60l	2
15	4140-TE-0009	Plug, Top Check, Sf Pump, 60l	2
16	4142-MP-0008	Top Check Seat, Upper	2
17	4142-TE-0013	Top Check Cage, 10 Gpm	2
18	6060-PT-0009	Retaining Nut	2
19	7400-PF-0002	Insert, Pillar 300, 3/4"	2
20	7400-PF-0006	Nut, Pillar 300, 3/4"	2
21	7400-TE-0004	3/4 Pillar Super 300-10gpm	2
22	8600-NP-0002	Sensor Sleeve	2
23	8600-XX-0072	Board, Electronics	2
24	10010-BP-0011	Base Plate Screw, Psb100	2
25	10010-NP-0012	1/2-16 X .700 Cap Screw	2
26	10040-EP-0003	Cap, Piston, Sf Pump, 60l	2
27	10040-PT-0005	Plug, 14-28 Fb	2
28	10040-TE-0002	1/8" Npt Plug	2
29	10040-TE-0003	Npt Plug - 1/4"	2
30	10040-TE-0015	Plug, Vent, Npt, 1/8"	4
31	10050-UH-0019	1.212 O.D. Glide Seal	4
32	10050-UH-0020	2.645 O.D. Glide Seal	4
33	10080-VI-022-75	O-ring, .022 X .070	2
34	10080-VI-038-75	.038 X .070 O-ring	2
35	10080-WV-025-60	O-ring, 025 X .070 O-ring	4
36	10080-WV-036-60	O-ring, 036 X .070 (White)	4
37	10090-MG-0002	Target, Lha, .750 X .125	2
38	14800-UH-0002	Qev04	4

Fittings (Type, Size, Option)			Assemblies	Body Inlet Only (Nut not included)
Flaretek Compatible	1/2 in.	F08	14510-PF-0004	7200-PF-0005
	3/4 in.	F12	14510-PF-0005	7200-PF-0006
	1 in.	F16	14510-PF-0006	7200-PF-0007
	1-1/4 in.	F20	14510-PF-0007	7200-PF-0008
Tube Out	1/2 in.	T08	7120-PF-0004	
	3/4 in.	T12	7120-PF-0005	
	1 in.	T16	7120-PF-0006	
	1-1/4 in.	T20	7120-PF-0011	
Weldable	3/4 in.	W12	7300-PF-0003	
	1 in.	W16	7300-PF-0004	
Pillar S-300	3/8 in.	P06	14530-PF-0028	7400-TE-0036
	1/2 in.	P08	14530-PF-0003	7400-TE-0003
	3/4 in.	P12	14530-PF-0004	7400-TE-0004
	1 in.	P16	14530-PF-0005	7400-TE-0005
	1-1/4 in.	P20	14530-PF-0009	7400-TE-0012
FNPT	1/2 in.	N08	7100-TE-0006	
	3/4 in.	N12	7100-TE-0004	
	1 in.	N16	7100-TE-0008	
Synchro-Flare	1/2 in.	S08	14520-TE-0003	7010-TE-0005
	3/4 in.	S12	14520-TE-0004	7010-TE-0004
	1 in.	S16	14520-TE-0006	7010-TE-0006
PrimeLock	1/2 in.	L08	14570-PF-0003	7800-TE-0003
	3/4 in.	L12	14570-PF-0004	7800-TE-0004
	1 in.	L16	14570-PF-0005	7800-TE-0005
Plugged		B00	7130-TE-0003	



<https://wkfluidhandling.com/lha-series/>

