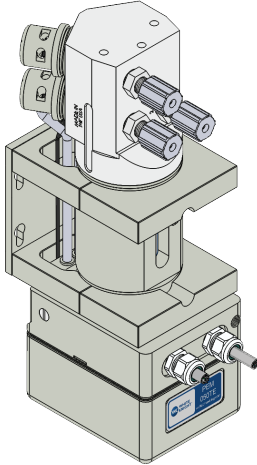
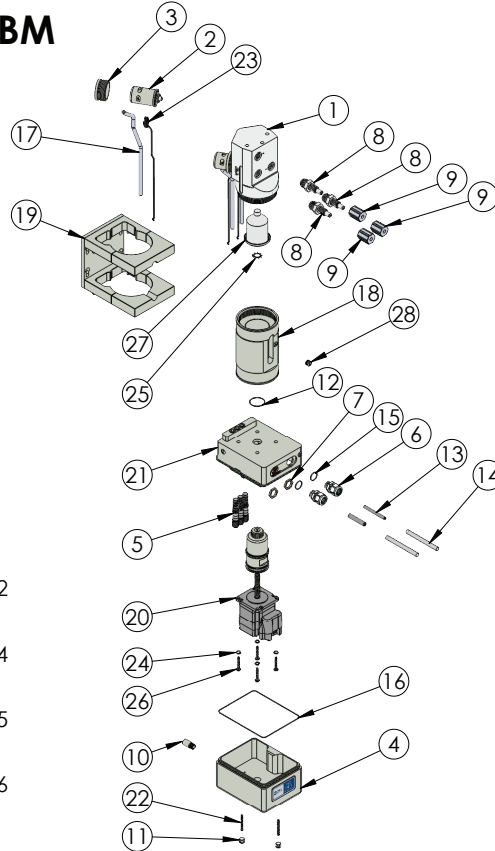


## PEM050 Exploded View



**PEM050-03-BM**



- For PEM050-02:** Change item number 1 to 2127-TE-0064  
Change item number 22 to 14400-XX-0001  
Change QTY of item 2, 3, 5, 8, 9, 17, and 23 to 2
- For PEM050-04:** Change item number 1 to 2127-TE-0066  
Change item number 22 to 14400-XX-0003  
Change QTY of item 2, 3, 5, 8, 9, 17, and 23 to 4
- For PEM050-05:** Change item number 1 to 2127-TE-0067  
Change item number 22 to 14400-XX-0004  
Change QTY of item 2, 3, 5, 8, 9, 17, and 23 to 5
- For PEM050-06:** Change item number 1 to 2127-TE-0068  
Change item number 22 to 14400-XX-0005  
Change QTY of item 2, 3, 5, 8, 9, 17, and 23 to 6

ITEM NO.	PART NUMBER	DESCRIPTION	QTY.
1	2127-TE-0065	HEAD, PUMP, PEM050-03	1
2	14470-XX-0002	1/4" Valve Assembly	3
3	10010-NP-0010	NUT, VALVE, 1/4" WK	3
4	10100-NP-0002	COVER, BOTTOM MOUNT, PEM050	1
5	8600-XX-0028	VALVE, SOLENOID, BULLET, BV310A	3
6	8600-KY-0001	CABLE GRIPPER, .160 to .312	2
7	8600-XX-0029	NUT, CABLE GRIPPER	2
8	7200-PF-0012	1/4" FLARETEK LIQUID FITTING	3
9	7210-PF-0001	NUT, FLARETEK, 1/4"	3
10	6110-PP-0003	POLY PRO MUFFLER 1/8" PORT SIZE	1
11	10040-TE-0002	PLUG, NPT, 1/8"	2
12	10080-VI-022-75	O-RING, .022 X .070	1
13	8600-XX-0030	Cable, 6 Wire, Shielded, 24 AWG	1
14	10070-PF-0005	Tubing, PFA, .250 I.D. x .312 O.D.	2
15	10080-VI-015-75	O-RING, .016 x .070	2
16	10080-VI-048-75	O-RING, .048 X .070	1
17	10070-PF-0001	TUBING, 1/4", THICK WALL	1
18	1125-NP-0006	BODY, PUMP, STEPPER, 50ML	1
19	14200-XX-0001	BASE PLATE ASSEMBLY	1
20	14320-XX-0002	PEM050 PISTON ASSEMBLY	1
21	14400-XX-0002	SHUTTLE ASSEMBLY	1
22	10010-SS-0037	SCREW, 1.250,	2
23	8600-XX-0027	SENSOR, LIGHT BREAK	3
24	10010-SS-0027	WASHER, LOCKING, #10	3
25	10050-SS-0004	WASHER, LOCK, M10	1
26	10010-SS-0109	Torx Plus Rounded Head Thread-Forming Screws	1
27	3200-MP-0004	DIAPHRAGM, ROLLING, 50ML	1
28	10040-TE-0016	PLUG, VENT, NPT, 1/8"	1

<https://wkfluidhandling.com/pem050/>