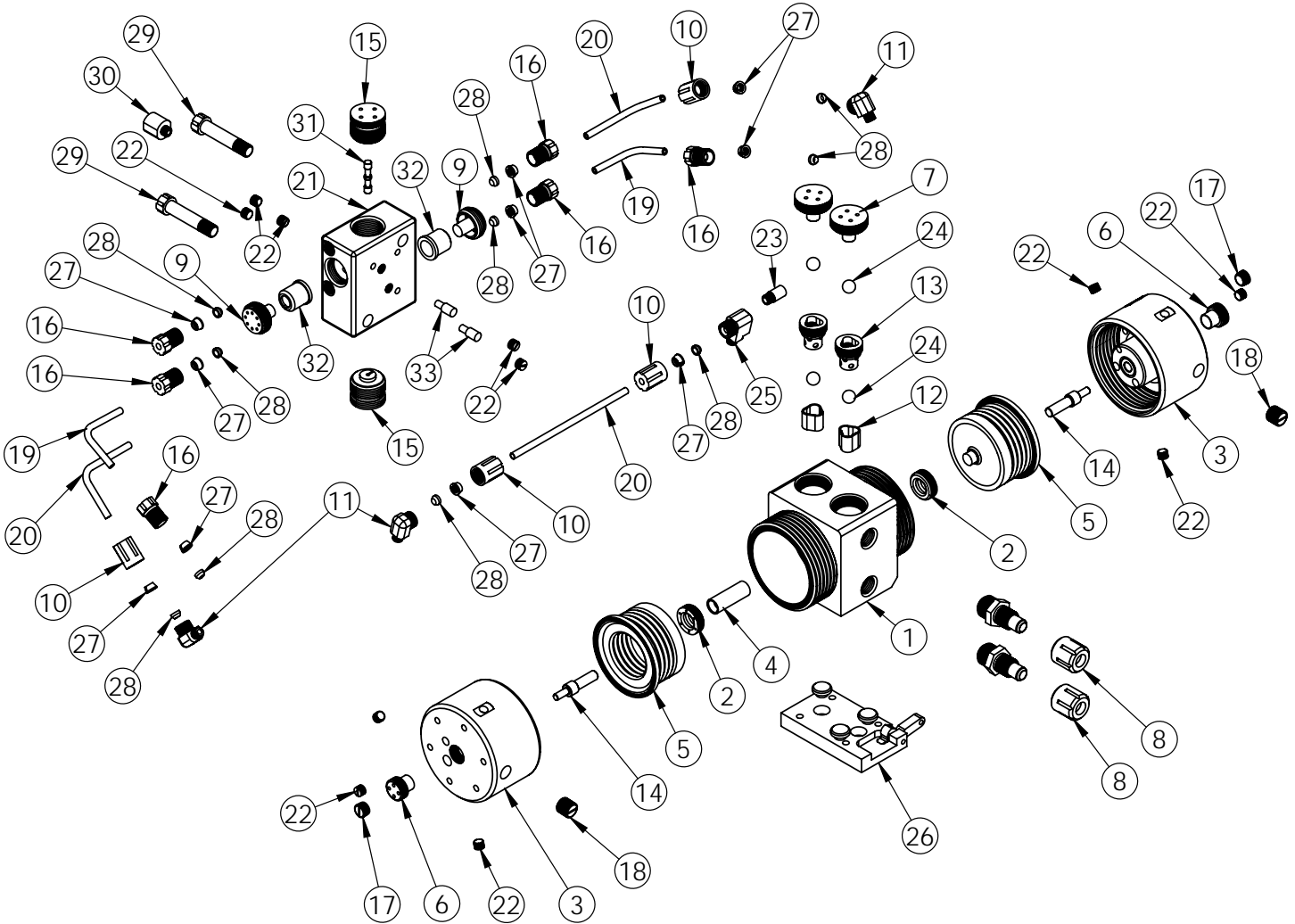




PUMP EXPLODED VIEW

PL30 Exploded View

PL30 pumps are legacy models. We recommend users consider PSA030 pumps, which provide better performance, increased flow rates, higher pressure capabilities, improved reliability, extended pump life and warranty periods, as well as shorter lead times. Details: <https://wkfluidhandling.com/psa-series/>



PL30 BILL OF MATERIALS

ITEM NO.	PART NUMBER	DESCRIPTION	QTY.	ITEM NO.	PART NUMBER	DESCRIPTION	QTY.
1	1125-TE-0013	PUMP BODY	1	18	10040-TE-0007	5/8" PLUG LONG	2
2	5143-TE-0001	SHAFT SEAL	2	19	10071-PF-0009	THIN-WALL TUBING, 1/4"	2
3	14100-EP-0003	PUMP HEAD ASSEMBLY	2	20	10071-PF-0008	THICK-WALL TUBING, 1/4"	3
4	5144-PF-0010	SHAFT	1	21	14400-NP-0001	SHUTTLE BODY AND SLEEVE	1
5	3130-MP-0015	BELLOWS	2	22	10040-TE-0002	1/8" NPT Plug	11
6	8100-PF-0004	FIBER OPTIC STROKE CAP	2	23	6110-PP-0003	MUFFLER	1
7	4140-TE-0001	TOP CHECK PLUG	2	24	4100-TE-0001	BALL CHECK, 1/2"	4
8	14510-NP-0001	1/2" FLARE ASSEMBLY	2	25	6040-NP-0001	1/8" NPT X 1/8" FNPT X 1/4" TEE	1
9	6150-NP-0001	WHISPER MUFFLER CAP	2	26	14200-NP-0001	BASE PLATE ASSEMBLY	1
10	6070-NP-0001	NUT, GRIPPER 1/4"	4	27	6080-KF-0001	1/4" GRIPPER	10
11	6030-NP-0001	1/8" NPT X 1/4" GRIPPER ELBOW	3	28	6080-TE-0001	1/4" FERRULE	10
12	4135-TE-0001	BOTTOM CHECK SEAT	2	29	10010-NP-0003	SHUTTLE SET SCREW	2
13	4142-TE-0002	TOP CHECK SEAT	2	30	6060-NP-0001	1/4" FNPT x 1/8" NPT ADAPTER	1
14	2128-CE-0004	SHIFT PISTON WITH STEM	2	31	6560-CE-0001	SHUTTLE SPOOL	1
15	6530-NP-0001	SHUTTLE END CAP	2	32	6140-TE-0001	Whisper@Mu er	2
16	6070-NP-0008	1/4" MALE GRIPPER STUB KNOB	6	33	10020-NP-0003	PIN, ALIGNMENT, SHUTTLE	2
17	10040-TE-0003	NPT Plug - 1/4"	2				

<https://wkfluidhandling.com/pl-series/>

