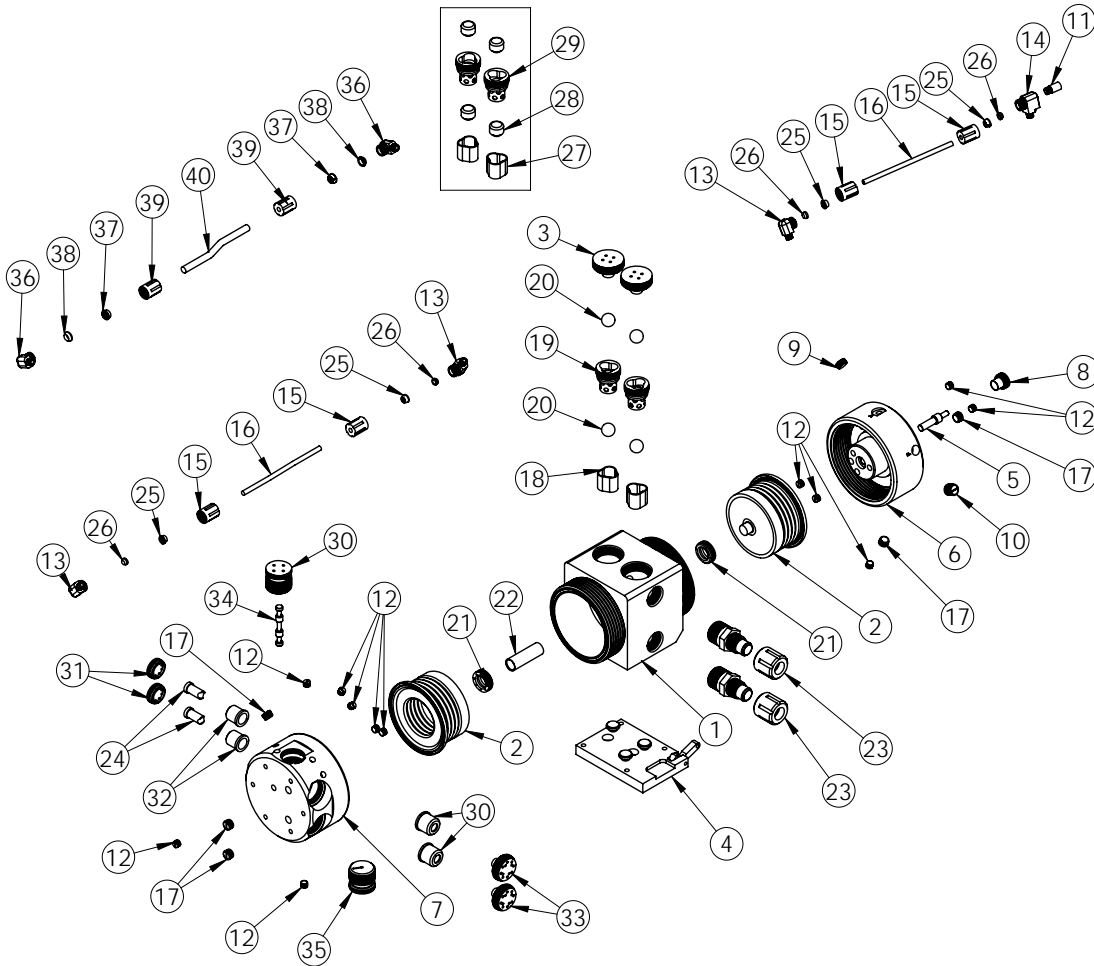




PL60 Master Exploded View

PL60 Master pumps are legacy models. We recommend users consider PSA060 pumps, which provide better performance, increased flow rates, higher pressure capabilities, improved reliability, extended pump life and warranty periods, as well as shorter lead times. Details: <https://wkfluidhandling.com/psa-series/>



PL 60 Master Head Bill Of Materials							
ITEM NO.	PART NUMBER	DESCRIPTION	QTY.	ITEM NO.	PART NUMBER	DESCRIPTION	QTY.
1	1125-TE-0014	Pump Body	1	21	5143-TE-0003	Shaft Seal	2
2	3130-MP-0016	Bellows Assembly	2	22	5144-PF-0002	Shaft	1
3	4140-TE-0002	Top Check Plug	2	23	14510-TE-0005	Flaretek® Compatible Assembly	2
4	14200-NP-0002	Base Plate Assembly	1	24	10020-TE-0002	Whisper® Muffler Pin	2
5	2128-CE-0004	Shift Piston - W/Stem	1	25	6080-KF-0001	Gripper -1/4"	4
6	14100-EP-0002	PL60 Slave Head Assembly	1	26	6080-TE-0001	Ferrule - 1/4"	4
7	14100-EP-0001	PL60 Master Head Assembly	1	27	4135-TE-0005	Check Seat - Flat	2
8	8100-PF-0004	Fiber Optic Plug	1	28	4100-TE-0005	Flat Check	4
9	10040-TE-0006	5/8" Plug .300 Long	1	29	4142-TE-0001	Top Check Cage - Flat Seal	2
10	10040-TE-0007	5/8" - 16 Plug .570 Long	1	30	6140-TE-0002	Whisper® Muffler-Exhaust	2
11	8110-PP-0003	Polypro Muffler	1	31	6130-TE-0001	Whisper® Muffler Cap-Shift	2
12	10040-TE-0002	NPT Plug -1/8"	12	32	6140-TE-0001	Whisper® Muffler -Shift	2
13	6030-NP-0001	1/8" NPT X 1/4" Grp. Elbow	3	33	6150-NP-0002	Whisper® Muffler Cap -Exhaust	2
14	6040-NP-0001	1/8 NPT X 1/4" GRP X 1/8" FNPT	1	34	6560-CE-0004	Shuttle Spool	1
15	6070-NP-0001	Female Gripper Nut-1/4"	4	35	6530-TE-0002	Shuttle End Plug	2
16	10070-PF-0002	PFA Tubing -1/4"	1	36	6020-NP-0001	1/4" NPT X 3/8" Gripper Elbow	2
17	10040-TE-0003	NPT Plug - 1/4"	5	37	6080-KF-0002	Gripper - 3/8"	2
18	4135-TE-0002	Bottom Check Seat - Ball	2	38	6080-TE-0002	Ferrule - 3/8"	2
19	4142-TE-0003	Top Check Cage Ball	2	39	6070-NP-0002	Female Gripper Nut - 3/8"	2
20	4100-TE-0002	Check Ball	4	40	10070-PF-0003	PFA Tubing- 3/8"	1

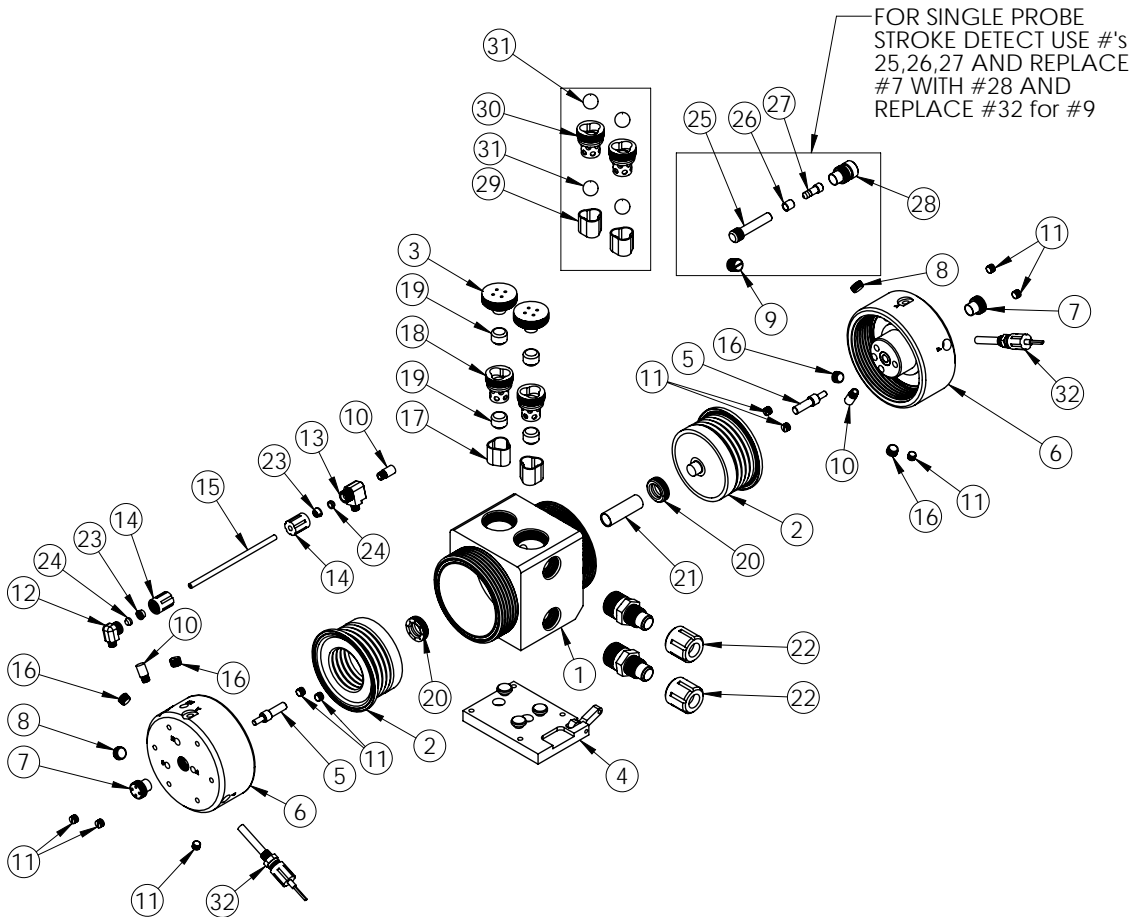
<https://wkfluidhandling.com/pl-series/>





PL60 Solenoid-Driven Exploded View

PL60 Solenoid-Driven pumps are legacy models. We recommend users consider PSA060 pumps, which provide better performance, increased flow rates, higher pressure capabilities, improved reliability, extended pump life and warranty periods, as well as shorter lead times. Details: <https://wkfluidhandling.com/psa-series/>



PL60 Solenoid-Driven BOM

ITEM NO.	PART NUMBER	DESCRIPTION	QTY.	ITEM	PART NUMBER	DESCRIPTION	QTY.
1	1125-TE-0014	Pump Body	1	18	4142-TE-0001	Top Check Cage-Flat	2
2	3130-MP-0016	Bellows	2	19	4100-TE-0005	Check Ball - Flat	4
3	4140-TE-0002	Top Check Plug	2	20	5143-TE-0003	Shaft Seal	2
4	14200-NP-0002	Base Plate Assembly	1	21	5144-PF-0002	Shaft	1
5	2128-CE-0004	Shift Piston - w/Stem	2	22	14510-TE-0005	Flaretek® Compatible Assembly	2
6	14100-EP-0002	Pump Head Assembly	2	23	6080-KF-0001	Gripper - 1/4"	2
7	8100-PF-0004	Fiber Optic Stroke cap	2	24	6080-TE-0001	Ferrule - 1/4"	2
8	10040-TE-0006	Plug -5/8" 300	2	25	8140-TE-0002	Detect Target Stem	1
9	10040-TE-0007	Plug-5/8" .570	1	26	8160-BP-0002	Fiber Optic Target Spacer	1
10	6110-PP-0003	Polypro Muffler	3	27	8150-TE-0002	Fiber Optic Target Extension	1
11	10040-TE-0002	NPT Plug-1/8"	10	28	8100-PF-0002	Extended Fiber Optic Stroke Cap (to be used for Single Probe Stroke Detect Mode)	1
12	6030-NP-0001	1/8" NPT X 1/4" Gripper Elbow	1	29	4135-TE-0002	Bottom Check Seat	2
13	6040-NP-0001	1/8 NPT X 1/4 GRP X 1/8FNPT	1	30	4142-TE-0003	Top Check Seat	2
14	6070-NP-0001	Female Gripper Nut-1/4"	2	31	4100-TE-0002	Check Ball	4
15	10070-PF-0001	PFA Tubing-Thickwall	1	32	14700-XX-0005	Fiber Optic Stroke Detect Assy.	1
16	10040-TE-0003	NPT Plug - 1/4"	4	33	14700-XX-0005	Fiber Optic Stroke Detect Assembly (to be used in addition to #32 for Single Probe Stroke Detect Mode)	1
17	4135-TE-0005	Bottom Check Seat-Flat	2				

<https://wkfluidhandling.com/pl-series/>

