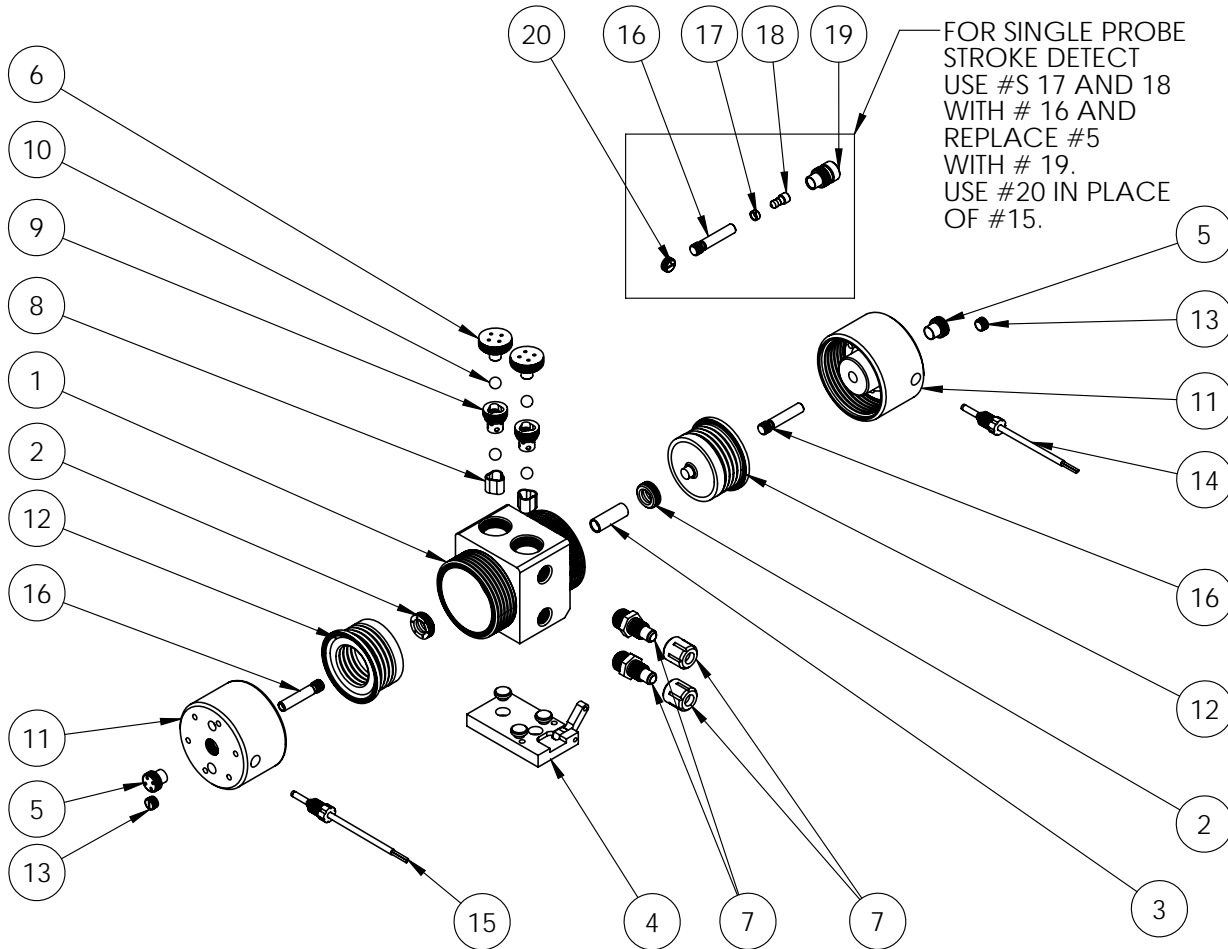


PLF30 Exploded View

PLF30 pumps are discontinued legacy models. We recommend users consider PFA030 pumps, which provide better performance, increased flow rates, higher pressure capabilities, improved reliability, extended pump life and warranty periods, as well as shorter lead times. Details: <https://wkfluidhandling.com/pfa-series/>
Discontinued 31 Dec 2015. Supported to 31 Dec 2020.



PLF30 Bill Of Materials							
ITEM NO.	PART NUMBER	DESCRIPTION	QTY.	ITEM NO.	PART NUMBER	DESCRIPTION	QTY.
1	1125-TE-0013	Pump Body	1	12	3130-MP-0021	Belows	2
2	5143-TE-0001	Shaft Seal	2	13	10040-TE-0003	NPT Plug - 1/4"	2
3	5144-PF-0010	Shaft	1	14	14700-XX-0005	Fiber Optic Stroke Detect Assembly (Single Probe Stroke Detect Mode)	1
4	14200-NP-0001	Base Plate Assembly	1	15	14700-XX-0005	Fiber Optic Stroke Detect Assembly (Dual Probe Stroke Detect Mode). Replace with a 5/8" NPT Plug When Not In Use.	1
5	8100-PF-0004	Stroke Detect End Cap	2	16	8140-TE-0001	Stroke Detect Target Stem	2
6	4140-TE-0001	Top Check Plug	2	17	8160-BP-0001	Fiber Optic Target Spacer	1
7	14510-TE-0002	Flaretek® Compatible Assembly	2	18	8150-TE-0001	Fiber Optic Target Extension	1
8	4135-TE-0001	Bottom Check Seat	2	19	8100-PF-0002	Extended Fiber Optic Stroke Cap	1
9	4142-TE-0002	Top Check Seat	2	20	10040-TE-0006	NPT Plug - 5/8"	1
10	4100-TE-0001	Check Ball	4	21	2127-EP-0035	Pump Left Head	1
11	2127-EP-0010	Pump Head Right	1				

<https://wkfluidhandling.com/plf-series/>