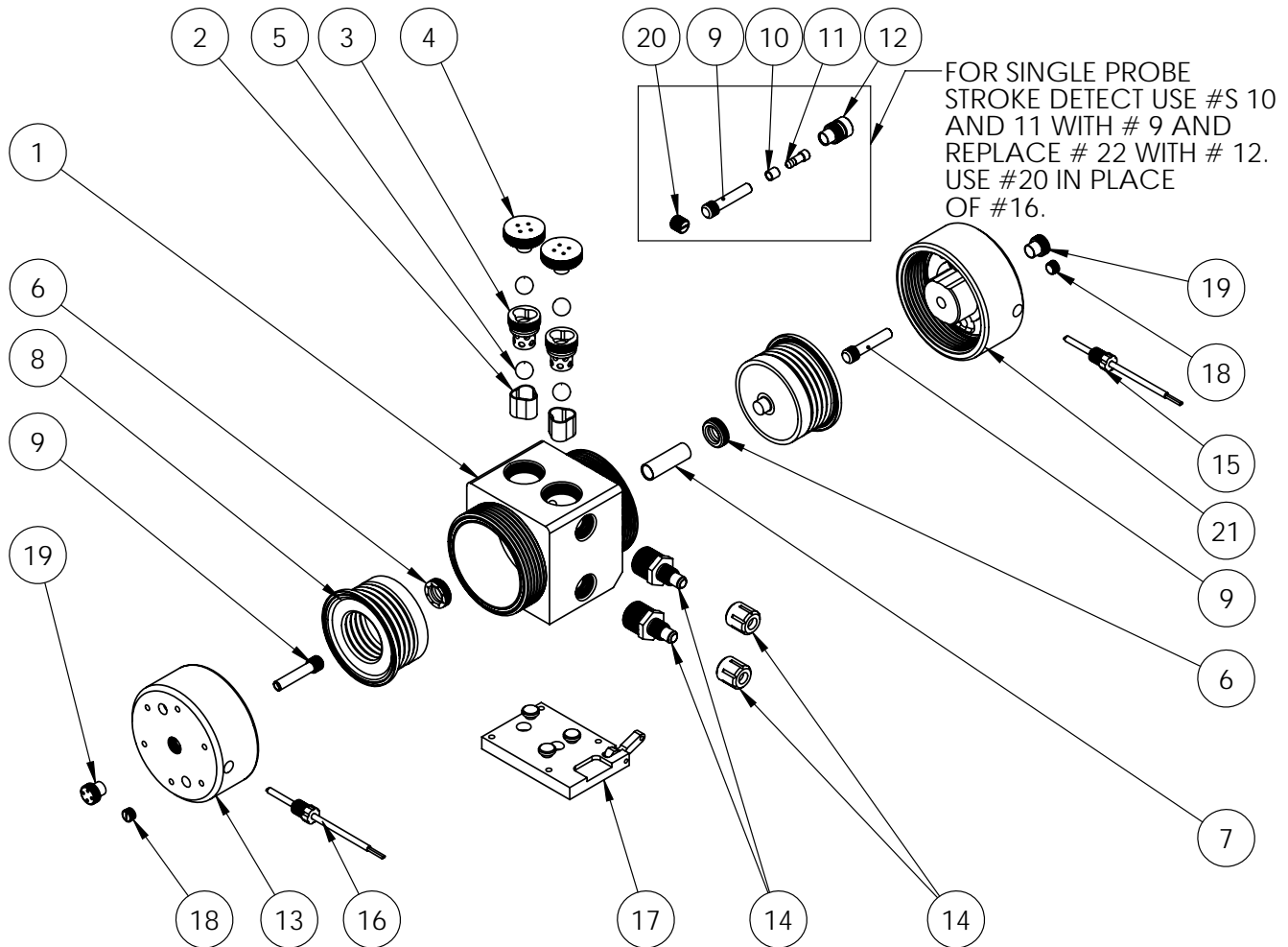


PLF60 Exploded View

PLF60 pumps are discontinued legacy models. We recommend users consider PFA060 pumps, which provide better performance, increased flow rates, higher pressure capabilities, improved reliability, extended pump life and warranty periods, as well as shorter lead times. Details: <https://wkfluidhandling.com/pfa-series/>
Discontinued 31 Dec 2015. Supported to 31 Dec 2020.



PLF60 Bill Of Materials							
ITEM NO.	PART NUMBER	DESCRIPTION	QTY.	ITEM NO.	PART NUMBER	DESCRIPTION	QTY.
1	1125-TE-0014	Pump Body	1	12	8100-PF-0002	Extended Fiber Optic Stroke Cap (Single Probe Dual Detect Mode)	2
2	4135-TE-0002	Bottom Check Seat	2	13	2127-EP-0011	Pump Head Right	1
3	4142-TE-0003	Top Check Cage	2	14	14510-TE-0006	Flaretek® Compatible Assembly	2
4	4140-TE-0002	Top Check Plug	2	15	14700-XX-0005	Fiber Optic Stroke Detect Assembly(Single Probe Stroke	1
5	4100-TE-0002	Check Ball	4	16	14700-XX-0005	Fiber Optic Stroke Detect Assembly (Dual Probe Stroke Detect mode) Replace with a 5/8"	1
6	5143-TE-0003	Shaft Seal	2	17	14200-NP-0002	Base Plate Assembly	1
7	5144-PF-0002	Shaft	1	18	10040-TE-0003	NPT Plug-1/4"	2
8	3130-MP-0022	Bellows	2	19	8100-PF-0004	Stroke Detect End Cap	2
9	8140-TE-0002	Fiber Optic Stem	2	20	10040-TE-0007	5/8" NPT Plug	1
10	8160-BP-0002	Fiber Optic Target	1	21	2127-EP-0033	Pump Head Left	1
11	8150-TE-0002	Fiber Optic Stem Extension	1				

<https://wkfluidhandling.com/plf-series/>