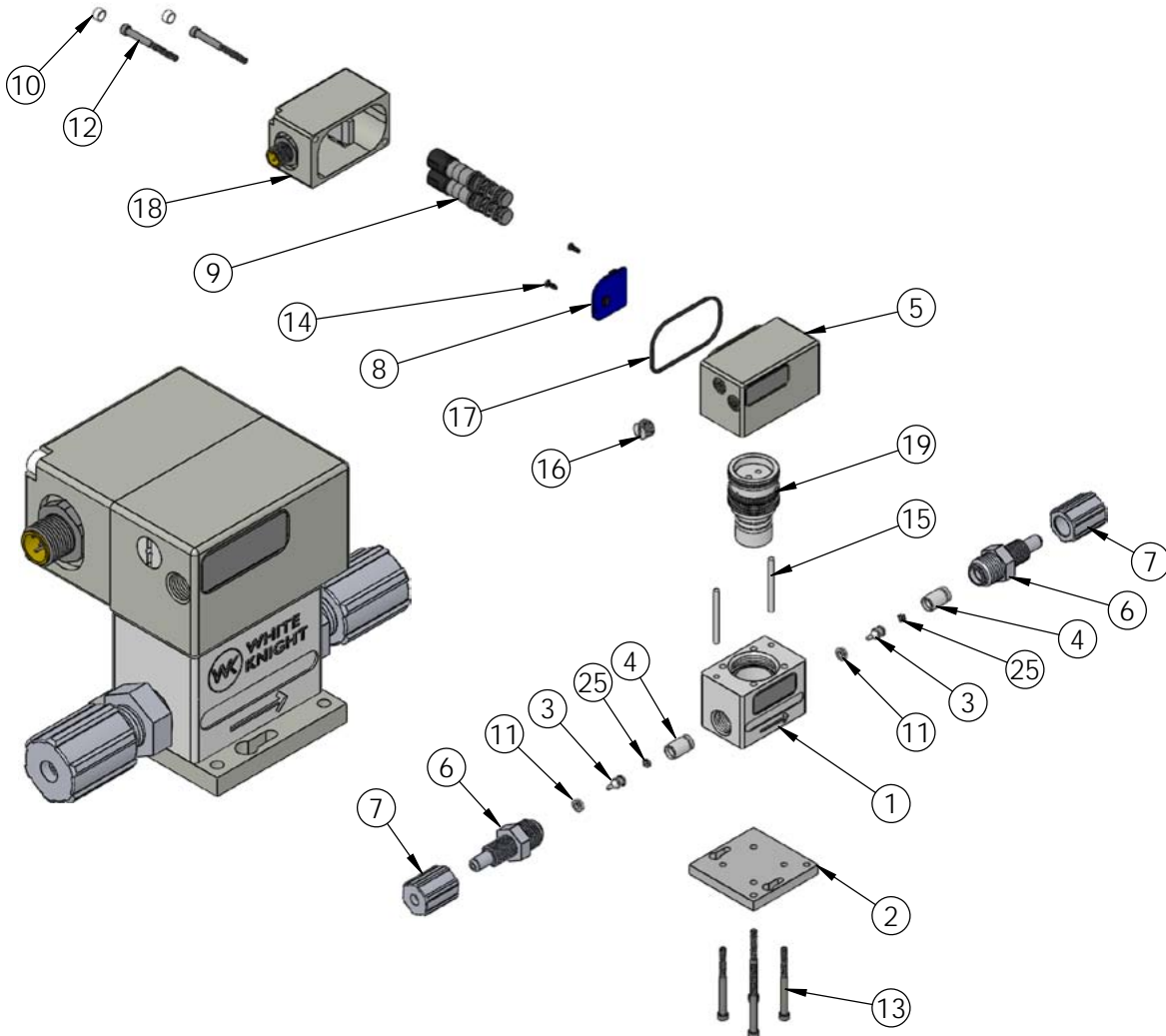


## PPMC300 Exploded View



### PPMC300 BILL OF MATERIALS

ITEM NO.	PART NUMBER	DESCRIPTION	QTY.
1	1125-TE-0029	BODY	1
2	1146-NP-0035	BASEPLATE	1
3	4101-MP-0001	CHECK BULLET, 04WK	2
4	4142-TE-0014	CAGE CHECK, WK04	2
5	6091-NP-0012	ENCLOSURE	1
6	7200-PF-0014	1/4" FLARETEK LIQUID FITTING	2
7	7210-PF-0001	NUT, FLARETEK, 1/4"	2
8	8600-XX-0026	BOARD, ELECTRONICS	1
9	8600-XX-0028	VALVE, SOLENOID, BULLET	2
10	10010-NP-0008	COVER, SCREW	2
11	4135-MP-0015	SEAT, LIP, WK04	2
12	10010-SS-0059	SCREW 1.50	2
13	10010-SS-0060	SCREW 1.75	4
14	10010-SS-0063	SCREW	2
15	10020-TE-0005	PIN	2
16	10040-TE-0016	PLUG, VENT, NPT, 1/8"	1
17	10080-VI-030-75	O-RING, 030	1
18	10100-NP-0007	COVER	1
19	14300-XX-0001	BELLOWS ASSEMBLY	1
25	10010-PF-0004	SPRING FOLDED, .160 x .160 x .080	2

<https://wkfluidhandling.com/ppmc/>