

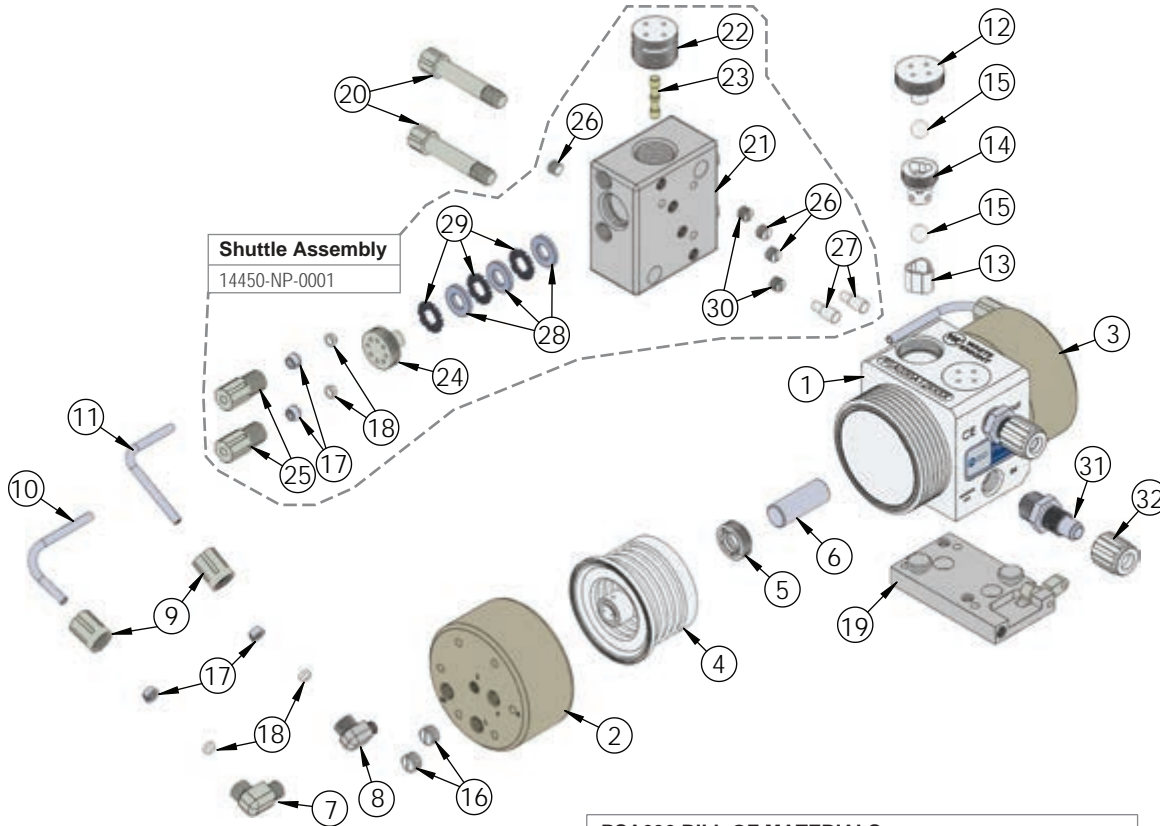


**WHITE KNIGHT®**

.....engineer approved™

# EXPLODED VIEW

## PSA030 Exploded View



**PSA030 BILL OF MATERIALS**

Fittings (Type, Size, Option)			Assemblies	Body Inlet Only (Nut not included)
Flaretek Compatible	1/4 in.	F04	14510-PF-0016	7200-PF-0001
	3/8 in.	F06	14510-PF-0001	7200-PF-0002
	1/2 in.	F08	14510-PF-0002	7200-PF-0003
	3/4 in.	F12	14510-PF-0003	7200-PF-0004
Tube Out	3/8 in.	T06	7120-PF-0001	
	1/2 in.	T08	7120-PF-0002	
	3/4 in.	T12	7120-PF-0003	
Weldable	1/2 in.	W08	7300-PF-0001	
	3/4 in.	W12	7300-PF-0002	
Pillar S-300	1/4 in.	P04	14530-PF-0025	7400-TE-0031
	3/8 in.	P06	14530-PF-0012	7400-TE-0023
	1/2 in.	P08	14530-PF-0001	7400-TE-0001
	3/4 in.	P12	14530-PF-0002	7400-TE-0002
FNPT	1/4 in.	N04	7100-TE-0001	
	3/8 in.	N06	7100-TE-0002	
	1/2 in.	N08	7100-TE-0003	
	3/4 in.	N12	7100-TE-0007	
Synchro-Flare	3/8 in.	S06	14520-TE-0009	7010-TE-0001
	1/2 in.	S08	14520-TE-0001	7010-TE-0003
	3/4 in.	S12	14520-TE-0002	7010-TE-0002
PrimeLock	1/4 in.	L04	14570-PF-0013	7800-TE-0013
	3/8 in.	L06	14570-PF-0014	7800-TE-0014
	1/2 in.	L08	14570-PF-0001	7800-TE-0001
	3/4 in.	L12	14570-PF-0002	7800-TE-0002
Plugged	B00	7130-TE-0001		

Item	Part	Description	Qty.
1	1125-TE-0017	Pump Body	1
2	2127-EP-0014	Head, Right	1
3	2127-EP-0015	Head, Left	1
4	14300-MP-0013	Bellows Assembly	2
5	5143-MP-0001	Shaft Seal	2
6	5144-PF-0024	Shaft	1
7	6030-NP-0002	Gripper Elbow, 1/4" NPT x 1/4"	2
8	6030-NP-0001	1/8" Npt X 1/4" Elbow	2
9	6070-NP-0001	1/4" Female Gripper Nut	4
10	10071-PF-0009	1/4" Tubing	2
11	10071-PF-0008	1/4" Thick Wall Tubing	2
12	4140-TE-0001	Top Check Plug	2
13	4135-MP-0006	Check Seat	2
14	4142-MP-0004	Check Cage	2
15	4100-MP-0004	1/2" Check Ball	4
16	10040-TE-0003	1/4" NPT Plug	4
17	6080-KF-0001	1/4" Gripper	8
18	6080-TE-0001	1/4" Ferrule	8
19	14200-NP-0006	Base Plate Assembly	1
20	10010-NP-0007	Shuttle Mount Screw	2
21	14400-NP-0006	Shuttle Body with Sleeve	1
22	6530-TE-0001	Shuttle End Cap	2
23	6560-CE-0001	Shuttle Spool	1
24	6150-NP-0004	Cap, Muffler	2
25	6070-NP-0004	1/4" Male Gripper Nut	4
26	10040-TE-0002	1/8" NPT Plug	3
27	10020-NP-0003	Shuttle Alignment Pin	2
28	6140-FP-0003	Baffle	6
29	6140-PP-0003	Baffle Spacer	6
30	10040-TE-0015	1/8" NPT Vent Plug	2
31	7200-PF-0003	1/2" Flaretek® Body	2
32	7210-PF-0003	1/2" Flaretek® Nut	2

<https://wkfluidhandling.com/psa-series/>

