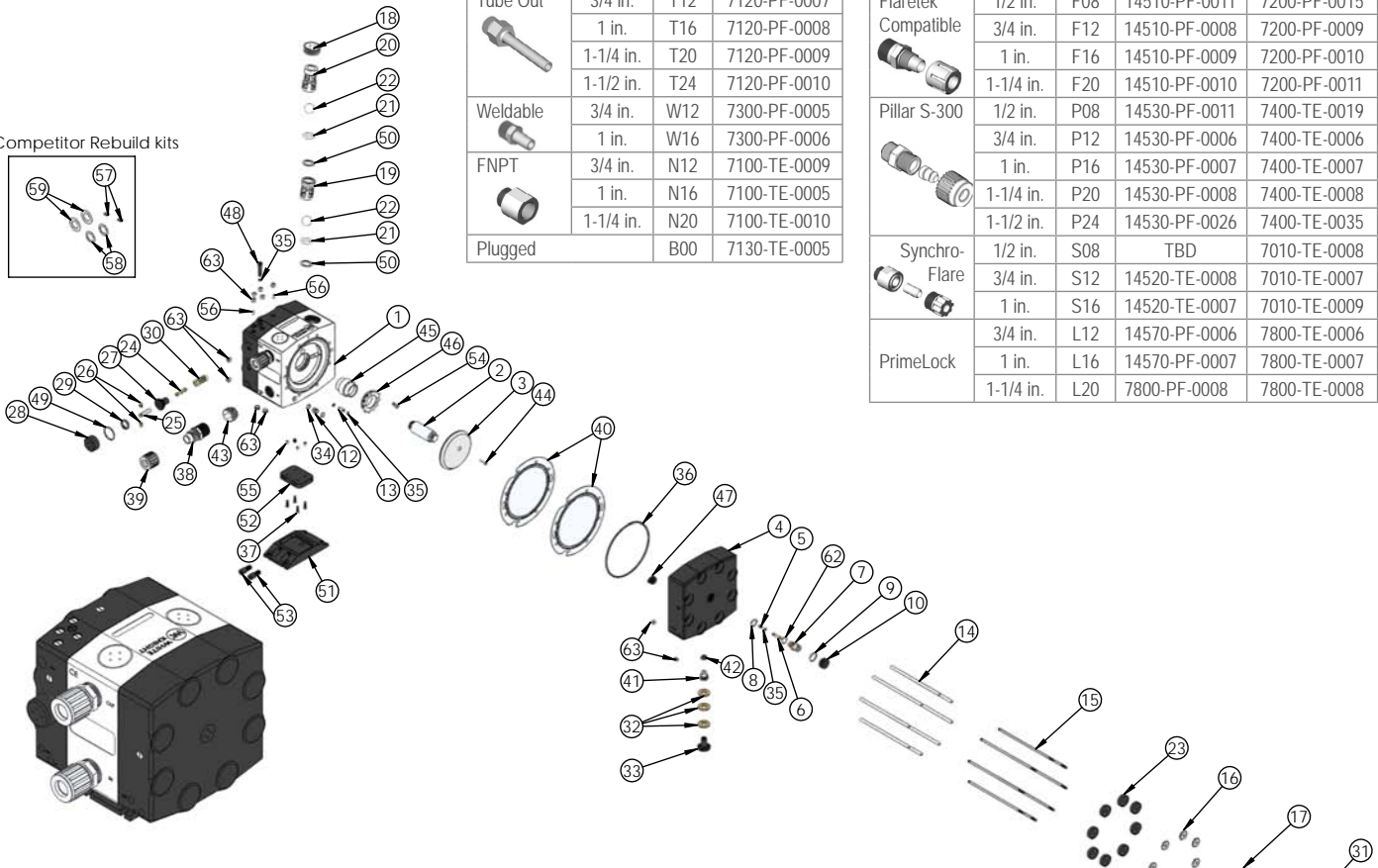
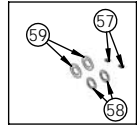




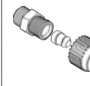




PSB100 Exploded View

For Competitor Rebuild kits



Fittings (Type, Size, Option)			Assemblies
 Tube Out	3/4 in.	T12	7120-PF-0007
	1 in.	T16	7120-PF-0008
	1-1/4 in.	T20	7120-PF-0009
	1-1/2 in.	T24	7120-PF-0010
 Weldable	3/4 in.	W12	7300-PF-0005
	1 in.	W16	7300-PF-0006
 FNPT	3/4 in.	N12	7100-TE-0009
	1 in.	N16	7100-TE-0005
	1-1/4 in.	N20	7100-TE-0010
Plugged		B00	7130-TE-0005

Fittings (Type, Size, Option)			Assemblies	Body Inlet Only (Nut not included)
 Flaretek Compatible	1/2 in.	F08	14510-PF-0011	7200-PF-0015
	3/4 in.	F12	14510-PF-0008	7200-PF-0009
	1 in.	F16	14510-PF-0009	7200-PF-0010
	1-1/4 in.	F20	14510-PF-0010	7200-PF-0011
 Pillar S-300	1/2 in.	P08	14530-PF-0011	7400-TE-0019
	3/4 in.	P12	14530-PF-0006	7400-TE-0006
	1 in.	P16	14530-PF-0007	7400-TE-0007
	1-1/4 in.	P20	14530-PF-0008	7400-TE-0008
	1-1/2 in.	P24	14530-PF-0026	7400-TE-0035
 Synchro-Flare	1/2 in.	S08	TBD	7010-TE-0008
	3/4 in.	S12	14520-TE-0008	7010-TE-0007
	1 in.	S16	14520-TE-0007	7010-TE-0009
 PrimeLock	3/4 in.	L12	14570-PF-0006	7800-TE-0006
	1 in.	L16	14570-PF-0007	7800-TE-0007
	1-1/4 in.	L20	7800-PF-0008	7800-TE-0008

Item	Part Number	Description	Qty.
1	1125-TE-0027	Body	1
2	5144-PF-0026	Shaft	1
3	3300-TE-0001	Strike Plate	2
4	2127-BP-0012	Head, Slave	1
5	10010-TE-0020	Shift Pin Screw	2
6	2128-PKC-0002	Shift Piston	2
7	2128-PKC-0001	Pilot Valve Sleeve	2
8	10050-MP-0011	Shift Pin Inner Cap Washer Seal	2
9	10050-MP-0012	Shift Pin Outer Cap Washer Seal	2
10	6530-BP-0003	Shift Pin Outer Cap	2
11	2127-BP-0013	Head, Master	1
12	10070-NP-0001	Air Tube, Supply	2
13	10070-NP-0002	Air Tube, Shift	2
14	10070-PF-0016	Tie Bolt Sleeve	8
15	10010-SS-0048	Tie Bolt	8
16	10050-SS-0010	Tie Bolt Washer	16
17	10010-SS-0049	Flange Nut, 1/4-20	16
18	4140-TE-0008	Top Check Plug	2
19	4137-TE-0009	Bottom Check Cage	2
20	4142-TE-0011	Top Check Cage	2
21	10080-TE-317-75	317 O-ring	4
22	4100-TE-0004	Check Ball - 1-1/8"	4
23	10050-NF-0001	Tie Bolt Rubber Insert	8
24	6560-CE-0006	Shuttle Spool	1
25	6570-PK-0001	Shuttle Detent Spool Adapter	1
26	6570-PK-0003	Shuttle Detent Leg-rounded Ends	2
27	6530-BP-0004	Shuttle Inner Cap	1
28	6530-BP-0005	Shuttle Outer Cap	1
29	6570-PK-0002	Shuttle Ring Detent	1
30	6550-CE-0006	Sleeve	1
31	10040-BP-0001	Tie Bolt Cap	16
32	6140-PP-0007	Muffler Felt Baffle	6

Item	Part Number	Description	Qty.
33	6140-BP-0001	Muffler Cap	2
34	10080-VI-014-75	014 O-ring	4
35	10080-VI-010-75	010 O-ring	7
36	10080-VI-262-75	262 O-ring	2
37	10010-SS-0050	10-32 Screw, .750 Long	4
38	7200-PF-0010	1" Flaretek-30gpm	2
39	7210-PF-0005	1" Flaretek Nut (PFA)	2
40	3200-PF-0001	Diaphragm	4
41	6150-UH-0003	Quick Exhaust Seat	2
42	3200-VI-0001	Diaphragm, Ø. 782	2
43	7130-TE-0008	Outlet Plug	2
44	10010-TE-0021	Shaft Lock Screw	2
45	5143-TE-0009	Shaft Seal	1
46	5143-TE-0010	Retainer Shaft Seal	1
47	6150-BP-0004	Air Diffuser	2
48	10040-BP-0002	Secondary Air Plug	1
49	10050-MP-0013	Shuttle Outer Cap Seal	1
50	10050-MP-0004	Check Seal Wear Washer	4
51	1146-BP-0005	Quick Change Base Plate	1
52	1146-BP-0006	Quick Change Adapter Plate	1
53	10010-BP-0011	Base Plate Screw	2
54	10010-TE-0022	Flat Head Phillips, .3125-18, .75 Long	1
55	10010-SS-0062	Threaded Insert 10-32 Internal Thread	4
56	10040-NP-0009	.0625 Shift Air Orifice	2
57	6570-PI-0001	Shuttle Detent Leg	2
58	10050-GY-0001	Inlet/outlet Washer Seal	2
59	10050-GY-0002	Check Plug Washer Seal	2
60	6140-BP-0002	Muffler Cap Plug	1
61	10080-VI-123-75	123 O-ring, 75 Durometer	1
62	10080-VI-018-75	018 O-ring, 75 Durometer	2
63	10040-TE-0003	Npt Plug - 1/4"	11

<https://wkfluidhandling.com/psb-series/>