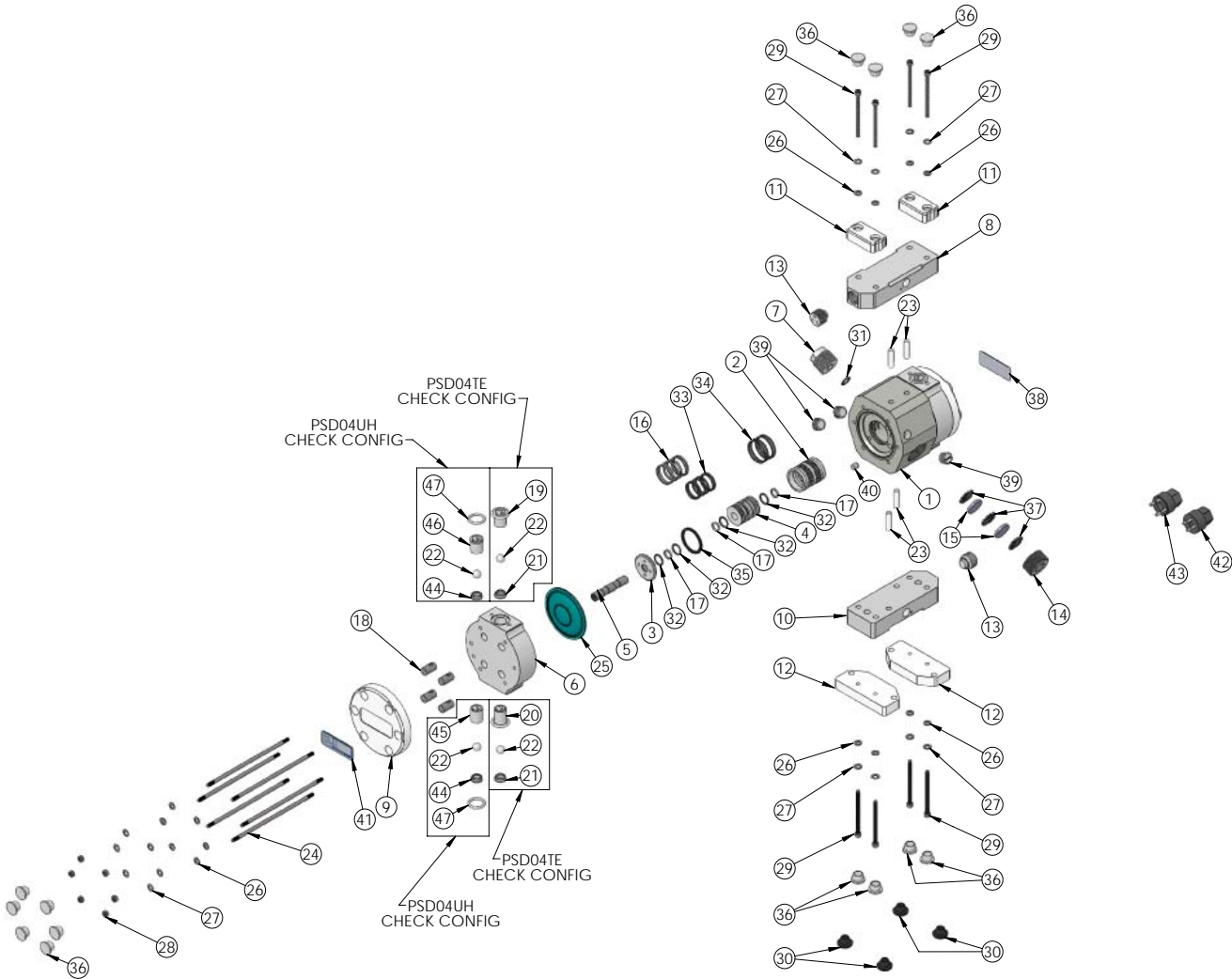


## PSD04 Exploded View



ITEM NO.	PART NUMBER	DESCRIPTION	Material	REV	QTY	ITEM NO.	PART NUMBER	DESCRIPTION	Material	REV	QTY
1	1125-NP-0005	BODY PSD04	NATURAL POLY	B a	1	22_S	4100-SS-0004	3/8" CHECK BALL	STAINLESS STEEL	A	
2	6550-PT-0004	MAIN SLEEVE	PET-P	D a	1	22_N	4100-NB-0004	3/8" CHECK BALL	NITRILE BUTADIENE	A	
3	6600-PT-0001	SLEEVE CAP	PET-P	B b	2	22_E	4100-EM-0004	3/8" CHECK BALL	EPDM	A	
4	6550-PT-0005	CENTER SLEEVE	PET-P	B a	1	23	10020-WC-0001	GUIDE PIN, $\phi$ 25, 1.00	WHITE PVC	A	4
5	5144-SS-0004	SHAFT, PSD04	STAINLESS STEEL	D a	1	24	10010-SS-0028	TIE BOLT, PSD04	STAINLESS STEEL	A	6
6	2127-TE-0069	HEAD, PSD04	PTFE	A a	2	25_O	3200-TE-0004	DIAPHRAGM, PSD04	PTFE	PP	2
7_N	8060-PT-0005	ADAPTER, INLET, 1/8" NPT	PET-P	A	1	25_E	3200-EM-0004	DIAPHRAGM, PSD04	EPDM	PP	
7_B	6060-PT-0006	ADAPTER, INLET, 1/8" BSPT	PET-P	A	1	25_N	3200-BN-0004	DIAPHRAGM, PSD04	BUNA NITRILE	PP	
8_N	7500-TE-0014	OUTLET MANIFOLD, PSD04, NPT	PTFE	A	1	26	10050-SS-0008	4 mm WASHER	STAINLESS STEEL	PP	20
8_B	7500-TE-0016	OUTLET MANIFOLD, PSD04, BSPT	PTFE	A	1	27	10050-SS-0009	BELLEVILLE WASHER, $\phi$ 375	STAINLESS STEEL	PP	20
8_N	7500-UH-0014	OUTLET MANIFOLD, PSD04, NPT	UHMW	A	1	28	10010-SS-0029	HEX NUT, M4 x 0.7	STAINLESS STEEL	PP	12
8_B	7500-UH-0016	OUTLET MANIFOLD, PSD04, BSPT	UHMW	A	1	29	10010-SS-0030	SOCKET HEAD BOLT, M4 x 0.7, 60 mm LONG	STAINLESS STEEL	PP	8
9	2129-PV-0007	HEAD RETAINER, PSD04	PET-P	A	2	30	10040-NB-0001	FEET RUBBER	NITRILE BUTADIENE	PP	4
10_N	7500-TE-0013	INLET MANIFOLD, PSD04, NPT	PTFE	A	1	31	10080-EM-012-70	-012 O-RING	EPDM	PP	1
10_B	7500-TE-0015	INLET MANIFOLD, PSD04, BSPT	PTFE	A	1	32	10080-EM-013-50	-013 O-RING	EPDM	PP	6
10_N	7500-UH-0013	INLET MANIFOLD, PSD04, NPT	UHMW	A	1	33	10080-EM-018-50	-018 O-RING	EPDM	PP	6
10_B	7500-UH-0015	INLET MANIFOLD, PSD04, BSPT	UHMW	A	1	34	10080-EM-020-70	-020 O-RING	EPDM	PP	4
11	2129-PV-0008	MANIFOLD RETAINER PSD04	WHITE PVC	A	2	35	10050-EM-0001	EPDM RING, 0625 THICK	EPDM	A	2
12	1146-PV-0004	BASE PLATE PSD04	WHITE PVC	B	2	36	10040-PP-0006	CAP PLUG, $\phi$ 470	POLYETHYLENE	PP	20
13	10040-TE-0018	1/4" PLUG	PTFE	A	2	37	6140-PP-0004	MESH, QEV 04 & 05	PP MESH	A	3
14	6150-NP-0007	CAP MUFFLER, QEV 30L & 60L	NATURAL POLY	B	1	38	19100-PP-0057	PSD04 LABEL	POLYPROPYLENE	PP	1
15	6140-PP-0002	BAFFLE, 800"	PP FELT	A	2	39	10040-TE-0003	NPT Plug - 1/4"	PTFE	A	3
16	10050-UH-0009	GLIDE SEAL, PSD04 SLEEVE	UHMW	B c	4	40	10020-NP-0011	PIN, $\phi$ 26 x 27 LONG	NATURAL POLY	A	3
17	10050-UH-0010	GLIDE SEAL, SHAFT PSD04	UHMW	B c	4	41	19100-PP-0059	CE LABEL FOR PSD04/06	POLYPROPYLENE	PP	1
18	10011-SS-0004	HEAD NUT, PSD04	STAINLESS STEEL	B	8	42	12100-PV-0043	MUFFLER TOOL	PVC	A	1
19	4142-TE-0009	TOP CHECK CAGE, PSD04	PTFE	B	2	43	12100-PV-0030	Sieve Wrench Tool	PVC	A	1
20	4137-TE-0007	BOTTOM CHECK CAGE, PSD04	PTFE	B	2	44	4135-UH-0012	CHECK SEAT, PSD04	UHMW	A	4
21	4135-MP-0010	CHECK SEAT, PSD04	MODIFIED PTFE	B	4	45	4137-UH-0006	CHECK CAGE, PSD04	UHMW	A	2
22_T	4100-TE-0007	3/8" CHECK BALL	PTFE	A	4	46	4142-UH-0001	TOP CHECK CAGE, PSD04	UHMW	A	2
						47	10080-TE-114-75	-114 O-RING	PTFE	PP	4

<https://wkfluidhandling.com/psd-series/>