



**WHITE KNIGHT**<sup>®</sup>

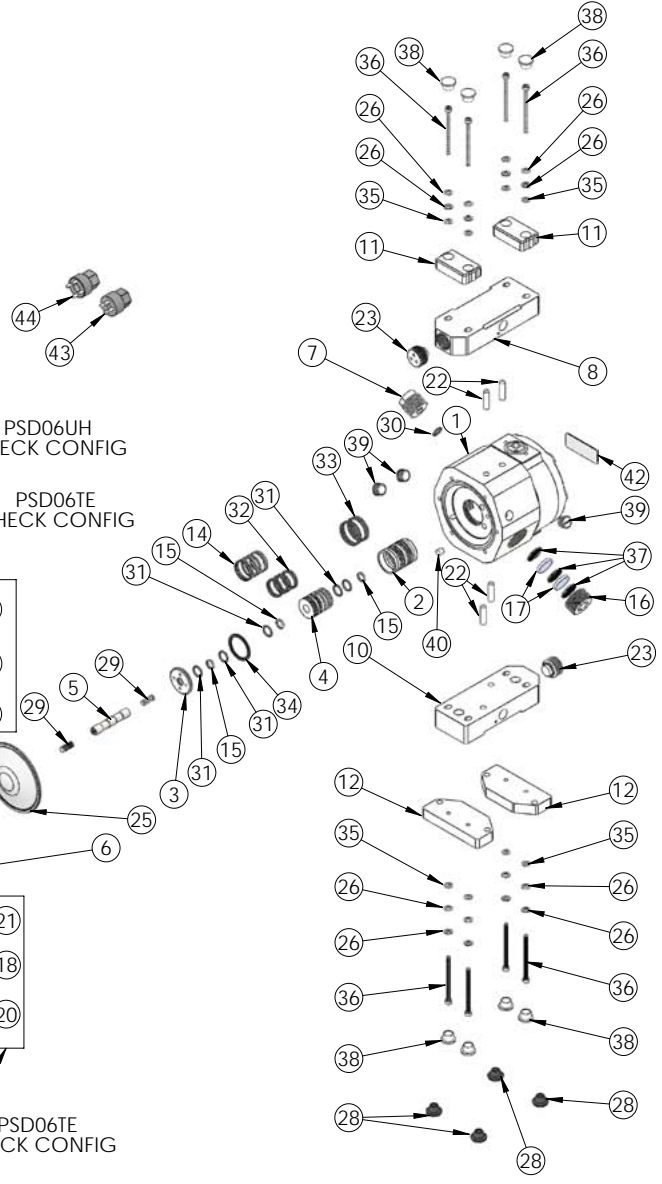
.....engineer approved™

# EXPLODED VIEW

## PSD06 Exploded View

ITEM NO.	PART NUMBER	DESCRIPTION	Material	Rev.	QTY.
1	1125-NP-0007	BODY, PSD06	NATURAL POLY	B	1
2	6550-PT-0004	MAIN SLEEVE	PET-P	D a	1
3	6600-PT-0001	SLEEVE CAP	PET-P	B	2
4	6550-PT-0005	CENTER SLEEVE	PET-P	B a	1
5	5144-SS-0005	SHAFT, PSD06	STAINLESS STEEL	D a	1
6	2127-TE-0010	HEAD, PSD06	PTFE	A	2
6	2127-LH-0020	HEAD, PSD06	UHMW	A	1
7 N	6060-PT-0005	ADAPTER, INLET, 1/8" NPT	PET-P	A	1
7 B	6060-PT-0005	ADAPTER, INLET, 1/8" BSPT	PET-P	A	1
8 N	7500-TE-0017	OUTLET MANIFOLD, NPT, PSD06	PTFE	A	1
8 B	7500-TE-0019	OUTLET MANIFOLD, BSPT, PSD06	PTFE	A	1
8 N	7500-LH-0017	OUTLET MANIFOLD, NPT, PSD06	UHMW	A	1
8 B	7500-LH-0019	OUTLET MANIFOLD, BSPT, PSD06	UHMW	A	1
9	2129-PV-0009	HEAD RETAINER, PSD06	WHITE PVC	A	2
10 N	7500-TE-0018	INLET MANIFOLD, NPT, PSD 06	PTFE	A	1
10 B	7500-TE-0020	INLET MANIFOLD, BSPT, PSD 06	PTFE	A	1
10 N	7500-LH-0018	INLET MANIFOLD, NPT, PSD 06	UHMW	A	1
10 B	7500-LH-0020	INLET MANIFOLD, BSPT, PSD 06	UHMW	A	1
11	2129-PV-0010	MANIFOLD RETAINER, PSD06	WHITE PVC	A	2
12	1146-PV-0005	BASE PLATE, PSD06	WHITE PVC	A	2
13	10010-SS-0031	SOCKET HEAD BOLT, PSD06	STAINLESS STEEL	A	6
14	10050-UH-0009	GUIDE SEAL, PSD04 SLEEVE	UHMW	B	6
15	10050-UH-0010	GUIDE SEAL, SHAFT PSD04	UHMW	B	4
16	6150-NP-0007	CAP, MUFFLER, QEV 30L & 60L	NATURAL POLY	B	1
17	6140-FP-0002	BAFFLE POROUS POLY 30/60 L QEV	PP FELT	A	2
18 T	4100-TE-0001	CHECK BALL - 1/2"	PTFE	A	4
18 E	4100-EM-0005	CHECK BALL - 1/2"	EPDM	A	1
18 N	4100-NB-0006	CHECK BALL - 1/2"	NITRILE BUTADIENE	A	1
19 S	4100-SS-0005	CHECK BALL - 1/2"	STAINLESS STEEL	A	1
19	4142-TE-0010	TOP CHECK CAGE, PSD06	PTFE	A	2
20	4135-MP-0011	SEAT, PSD06	MODIFIED PTFE	A	4
21	4137-TE-0008	BOTTOM CHECK CAGE, PSD06	PTFE	A	2
22	10020-WC-0001	GUIDE PIN, $\varnothing$ 25, 1.00	WHITE PVC	A	4
23	10040-TE-0019	PLUG, PSD06	PTFE	A	2
24	10011-SS-0004	HEAD NUT, PSD04/06	STAINLESS STEEL	PP	8
25 O	3200-TE-0005	PSD06 DIAPHRAGM	EPDM	PP	2
25 E	3200-EM-0005	PSD06 DIAPHRAGM	EPDM	PP	1
25 N	3200-BN-0005	PSD06 DIAPHRAGM	BUNA NITRILE	PP	1
26	10050-SS-0009	BELLEVILLE WASHER, $\varnothing$ 3/16	STAINLESS STEEL	PP	40
27	10010-SS-0029	HEX NUT, M4 x 0.7	STAINLESS STEEL	PP	12
28	10040-NB-0001	FEET RUBBER	NITRILE BUTADIENE	PP	4
29	10010-SS-0032	THREADED STUD, PSD06, 1/4-28	STAINLESS STEEL	PP	2
30	10080-EM-012-70	-0.12 O-RING	EPDM	PP	1
31	10080-EM-013-50	-0.13 O-RING	EPDM	PP	6
32	10080-EM-018-50	-0.18 O-RING	EPDM	PP	6
33	10080-EM-020-70	-0.20 O-RING	EPDM	PP	4
34	10050-EM-0001	EPDM RING, .0625 THICK	EPDM	A	2
35	10050-SS-0008	4 mm WASHER	STAINLESS STEEL	PP	20
36	10010-SS-0030	SOCKET HEAD BOLT, M4 x 0.7, 50 mm LONG	STAINLESS STEEL	PP	8
37	6140-FP-0004	MESH, QEV 04 & 05	PP MESH	A	3
38	10040-FE-0006	CAP PLUG, $\varnothing$ 47.9	POLYETHYLENE	PP	20
39	10040-TE-0003	NPT Plug - 1/4"	PTFE	A	3
40	10020-NP-0011	PIN, $\varnothing$ 26 X .27 LONG	NATURAL POLY	A	3
41	19100-PP-0059	CE STICKER FOR PSD04/06	POLYPROPYLENE	PP	1
42	19100-PP-0055	PRODUCT LABEL FOR PSD06	POLYPROPYLENE	PP	1
43	12100-FV-0043	MUFFLER TOOL	PVC	A	1
44	12100-FV-0044	Seize Wrench Tool	PVC	A	1
45	4135-JH-0006	SEAT, PSD06	UHMW	A	4
46	4137-JH-0007	CHECK CAGE, PSD06	UHMW	A	4
47	10080-TE-117-75	117 O-RING	PTFE	PP	4

PTFE COATING  
UHMW COATING



<https://wkfluidhandling.com/psd-series/>

