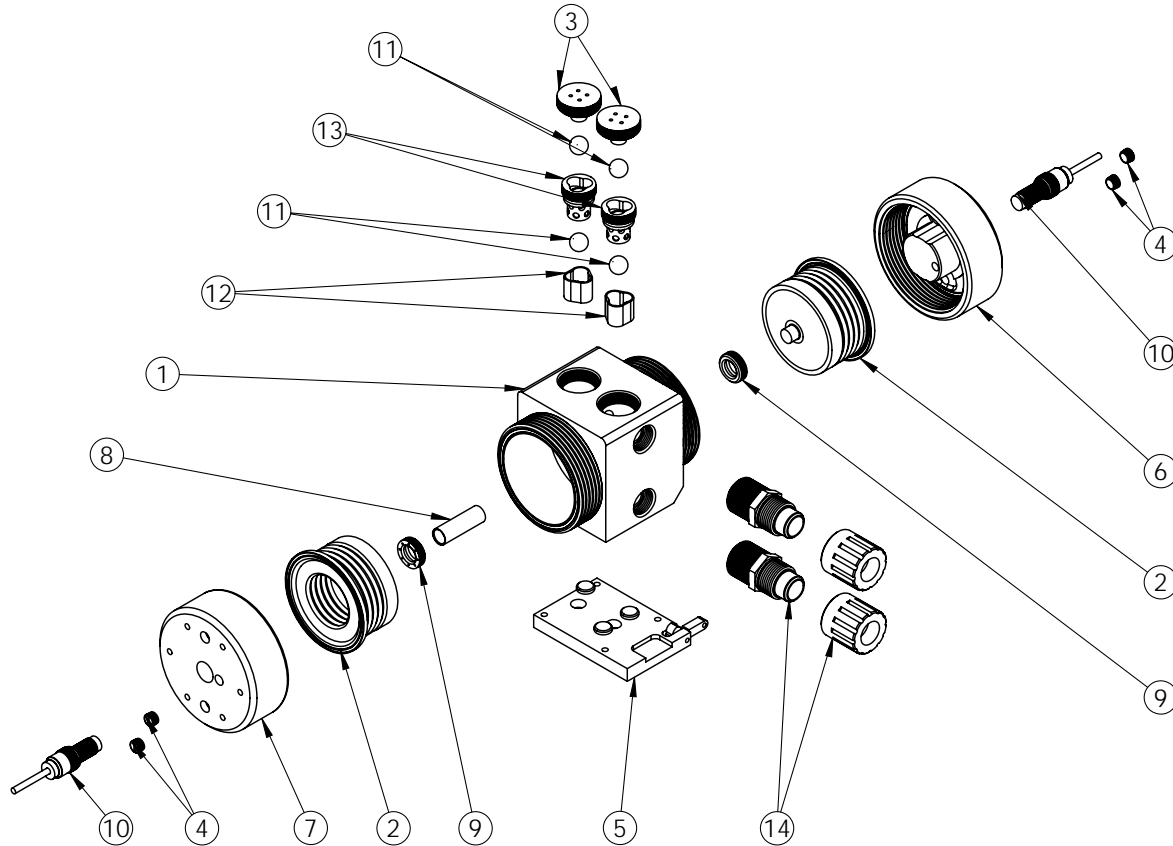




## PX60 Exploded View

PX60 pumps are discontinued legacy models. We recommend users consider PXA060 pumps, which provide better performance, increased flow rates, higher pressure capabilities, improved reliability, extended pump life and warranty periods, as well as shorter lead times. Details: <https://wkfluidhandling.com/pxa-series/>  
Discontinued 31 Dec 2015. Supported to 31 Dec 2020.



PX60 Bill Of Materials			
ITEM NO.	Part Number	DESCRIPTION	QTY.
1	1125-TE-0014	Body	1
2	14300-MP-0012	Bellows Assembly	2
3	4140-TE-0002	Top Check Plug	2
4	10040-TE-0003	NPT Plug - 1/4"	4
5	14200-NP-0002	Base Plate Assembly	1
6	2127-EP-0031	Left Head	1
7	2127-EP-0008	Right Head	2
8	5144-PF-0002	Shaft	1
9	5143-TE-0003	Shaft Seal	2
10	14700-XX-0001	Proximity Assembly	2
11	4100-TE-0002	Check Ball	4
12	4135-TE-0002	Bottom Check Seat	2
13	4142-TE-0003	Top Check Cage	2
14	14510-TE-0006	Flaretek® Compatible Assembly	2

<https://wkfluidhandling.com/px-series/>

