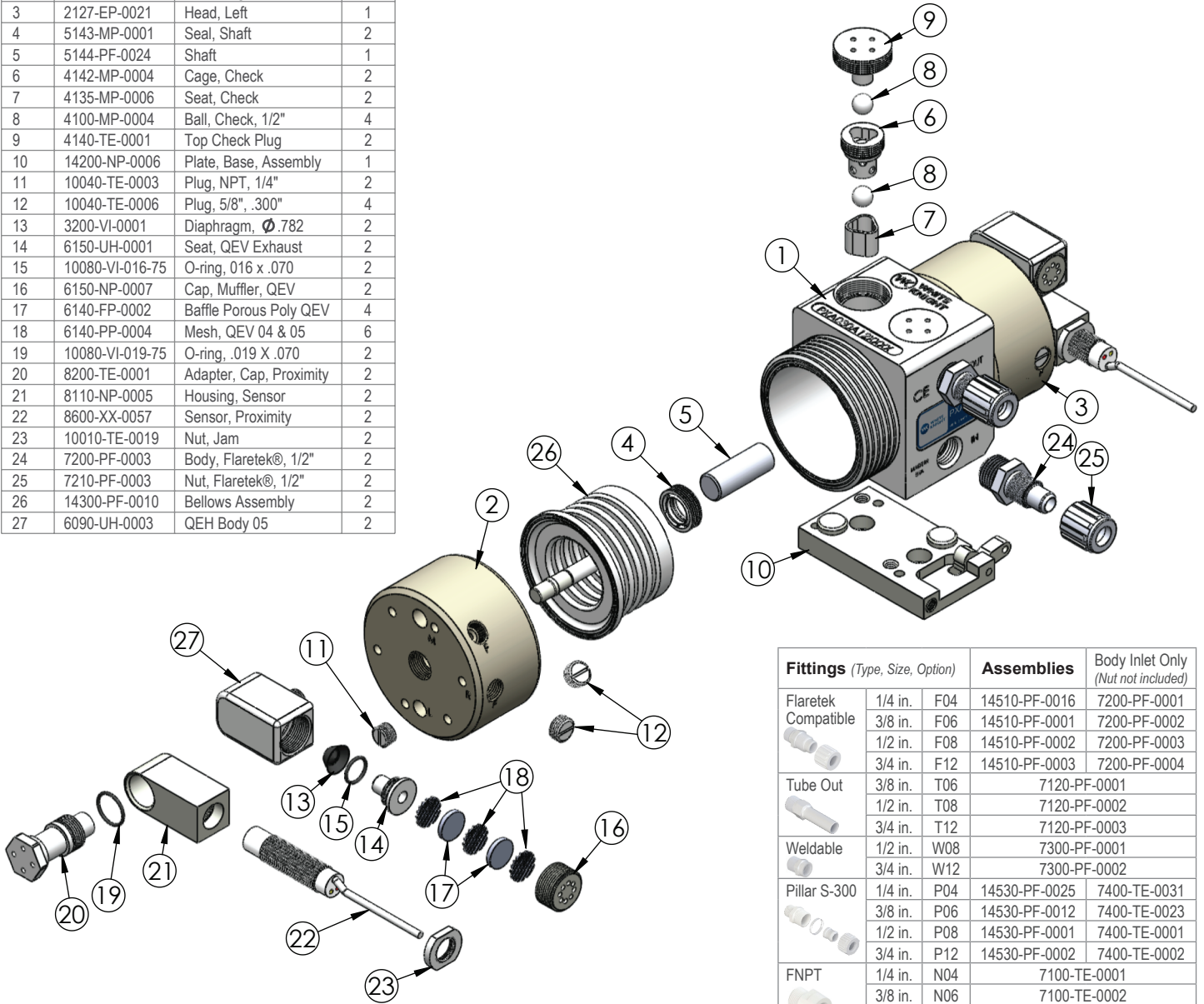


PXA030 Exploded View

PXA030 BILL OF MATERIALS			
Item	Part	Description	Qty
1	1125-TE-0017	Pump Body	1
2	2127-EP-0020	Head, Right	1
3	2127-EP-0021	Head, Left	1
4	5143-MP-0001	Seal, Shaft	2
5	5144-PF-0024	Shaft	1
6	4142-MP-0004	Cage, Check	2
7	4135-MP-0006	Seat, Check	2
8	4100-MP-0004	Ball, Check, 1/2"	4
9	4140-TE-0001	Top Check Plug	2
10	14200-NP-0006	Plate, Base, Assembly	1
11	10040-TE-0003	Plug, NPT, 1/4"	2
12	10040-TE-0006	Plug, 5/8", .300"	4
13	3200-VI-0001	Diaphragm, Ø.782	2
14	6150-UH-0001	Seat, QEV Exhaust	2
15	10080-VI-016-75	O-ring, 016 x .070	2
16	6150-NP-0007	Cap, Muffler, QEV	2
17	6140-FP-0002	Baffle Porous Poly QEV	4
18	6140-PP-0004	Mesh, QEV 04 & 05	6
19	10080-VI-019-75	O-ring, .019 X .070	2
20	8200-TE-0001	Adapter, Cap, Proximity	2
21	8110-NP-0005	Housing, Sensor	2
22	8600-XX-0057	Sensor, Proximity	2
23	10010-TE-0019	Nut, Jam	2
24	7200-PF-0003	Body, Flaretek®, 1/2"	2
25	7210-PF-0003	Nut, Flaretek®, 1/2"	2
26	14300-PF-0010	Bellows Assembly	2
27	6090-UH-0003	QEH Body 05	2



Leak Detect	
Part	Description
14600-XX-0009	LF0 15 ft fiber optic cable with no amplifier
14600-XX-0010	LF1 15 ft fiber optic cable with D10 amplifier
14600-XX-0011	LF2 25 ft fiber optic cable with no amplifier
14600-XX-0012	LF3 25 ft fiber optic cable with D10 amplifier
14600-XX-0031	LC0 15 ft conductivity cable
14600-XX-0040	LC1 25 ft conductivity cable

Stroke Detect	
Part	Description
14700-XX-0029	SX1 15 ft PNP normally open proximity switch

Fittings (Type, Size, Option)		Assemblies	Body Inlet Only (Nut not included)
Flaretek Compatible	1/4 in. F04	14510-PF-0016	7200-PF-0001
	3/8 in. F06	14510-PF-0001	7200-PF-0002
	1/2 in. F08	14510-PF-0002	7200-PF-0003
	3/4 in. F12	14510-PF-0003	7200-PF-0004
Tube Out	3/8 in. T06		7120-PF-0001
	1/2 in. T08		7120-PF-0002
	3/4 in. T12		7120-PF-0003
Weldable	1/2 in. W08		7300-PF-0001
	3/4 in. W12		7300-PF-0002
Pillar S-300	1/4 in. P04	14530-PF-0025	7400-TE-0031
	3/8 in. P06	14530-PF-0012	7400-TE-0023
	1/2 in. P08	14530-PF-0001	7400-TE-0001
	3/4 in. P12	14530-PF-0002	7400-TE-0002
FNPT	1/4 in. N04		7100-TE-0001
	3/8 in. N06		7100-TE-0002
	1/2 in. N08		7100-TE-0003
	3/4 in. N12		7100-TE-0007
Synchro-Flare	3/8 in. S06	14520-TE-0009	7010-TE-0001
	1/2 in. S08	14520-TE-0001	7010-TE-0003
	3/4 in. S12	14520-TE-0002	7010-TE-0002
PrimeLock	1/4 in. L04	14570-PF-0013	7800-TE-0013
	3/8 in. L06	14570-PF-0014	7800-TE-0014
	1/2 in. L08	14570-PF-0001	7800-TE-0001
	3/4 in. L12	14570-PF-0002	7800-TE-0002
Plugged	B00		7130-TE-0001

<https://wkfluidhandling.com/pxa-series/>