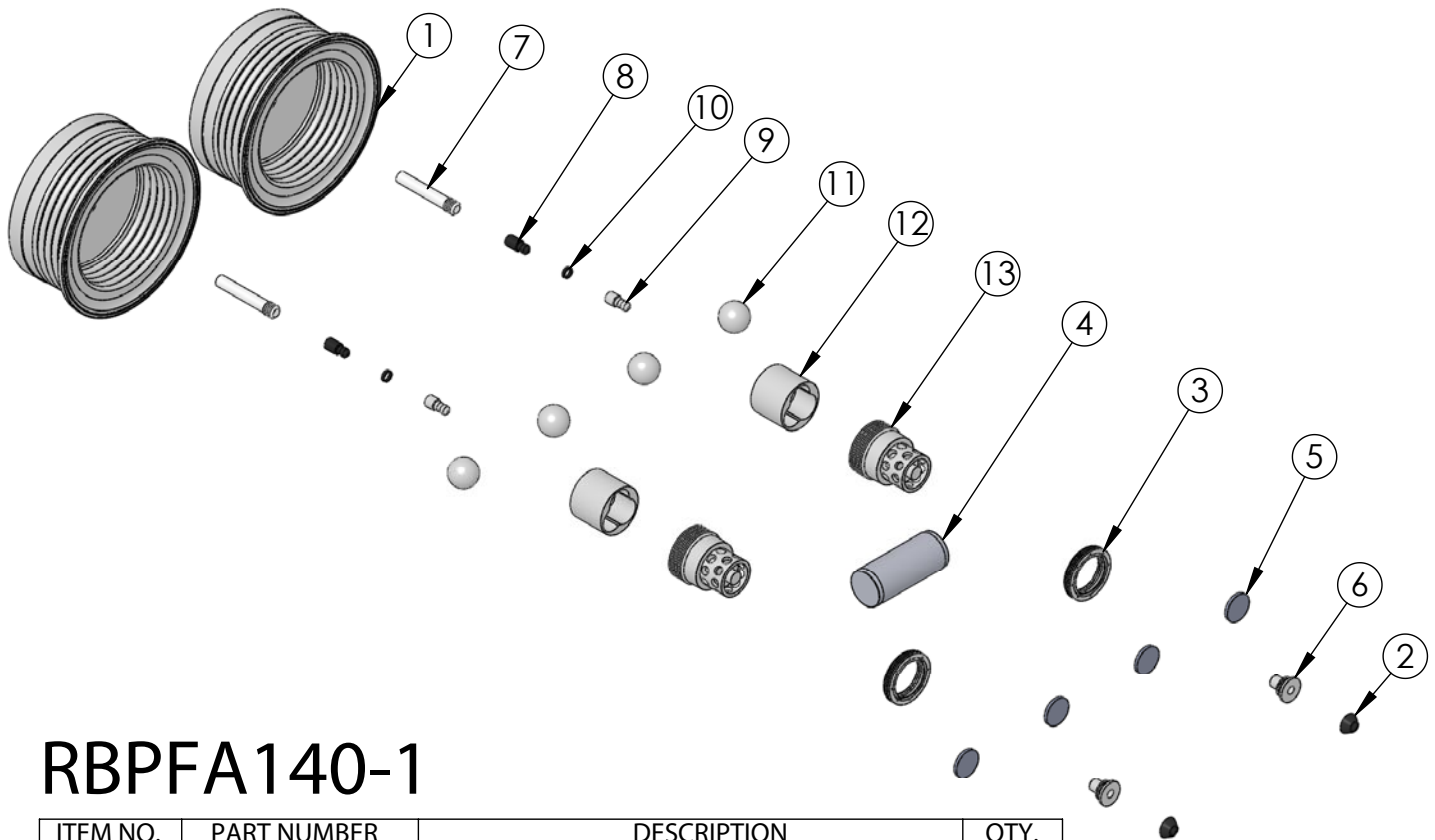


## RBPFA140-1 Rebuild Kit

Rebuild kit for PFA140 pump is RBPFA140-1. To request rebuilds by White Knight, use RBPFA140-5. Contact White Knight for details. Pump rebuilds require tool kit: 12200-XX-0021 (Legacy# PFA140-170).



## RBPFA140-1

ITEM NO.	PART NUMBER	DESCRIPTION	QTY.
1	3130-MP-0029	BELLOWS A.H. & U, 140L (.075)	2
2	3200-VI-0001	DIAPHRAGM, $\phi$ .782	2
3	5143-MP-0003	SEAL, SHAFT, 140L	2
4	5144-PF-0022	SHAFT, SOLID, PFA, 140L	1
5	6140-FP-0001	BAFFLE, 1.100"	4
6	6150-UH-0001	SEAT, QEV EXHAUST, 30L & 60L	2
7	8140-TE-0006	STEM, STROKE DETECT TARGET, 140L	2
8	8150-BP-0001	EXTENSION, TARGET, UNIVERSAL	2
9	8150-TE-0005	EXTENSION, TARGET, .145	2
10	8160-BP-0005	BLANK, TARGET, .145	2
11	4100-MP-0003	CHECK BALL- 1-1/8"	4
12	4135-MP-0004	BOTTOM CHECK SEAT-120/140L HIGH FLOW	2
13	4142-MP-0003	TOP CHECK SEAT-30GPM HIGH FLOW	2