



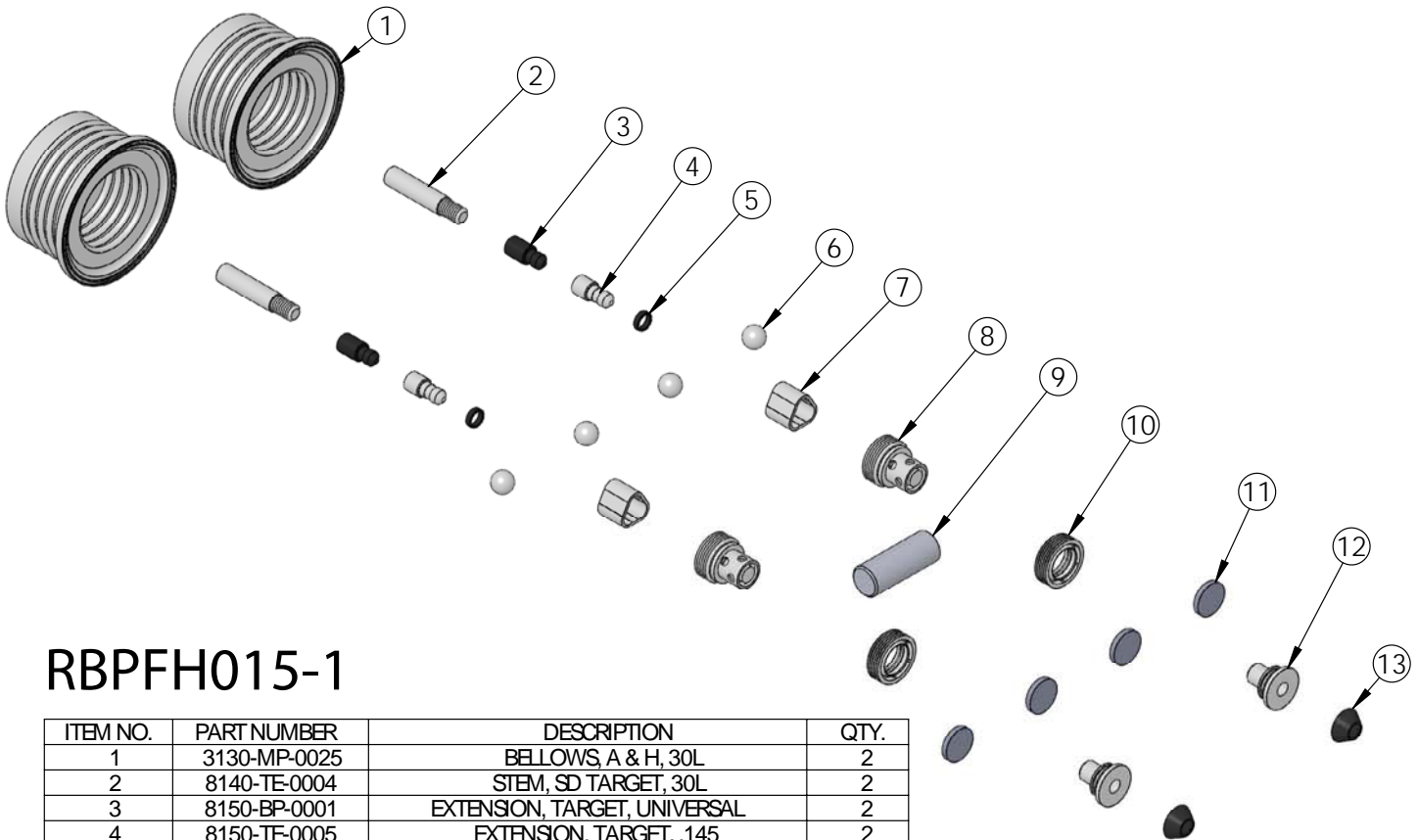
## RBPFH015-1 Rebuild Kit

Rebuild kit for PFH015 pump is RBPFH015-1. Rebuild kit for dry-run PFHSD015 pump is RBPFHSD015-1.

To request rebuilds by White Knight, use RBPFH015-5 or RBPFHSD015-5.

Contact White Knight for details. Pump rebuilds require tool kit: 12200-XX-0030 (Legacy# PFH015-170).

*Note: Dry-run RBPFHSD015-1 pump rebuild kits include different shaft and shaft seals.*



## RBPFH015-1

ITEM NO.	PART NUMBER	DESCRIPTION	QTY.
1	3130-MP-0025	BELLOWS, A & H, 30L	2
2	8140-TE-0004	STEM, SD TARGET, 30L	2
3	8150-BP-0001	EXTENSION, TARGET, UNIVERSAL	2
4	8150-TE-0005	EXTENSION, TARGET, .145	2
5	8160-BP-0005	BLANK, TARGET, .145	2
6	4100-MP-0004	CHECK BALL 1/2"	4
7	4135-MP-0006	CHECK SEAT BOTTOM HI-FLOW 25L & 30L	2
8	4142-MP-0004	CHECK CAGE TOP HI-FLOW 25L & 30L	2
9	5144-PF-0024	SHAFT	1
10	5143-MP-0001	SEAL, SHAFT, 30L	2
11	6140-FP-0002	BAFFLE, .800"	4
12	6150-UH-0001	SEAT, QEV EXHAUST, 30L & 60L	2
13	3200-VI-0001	DIAPHRAGM, $\phi$ .782	2

