



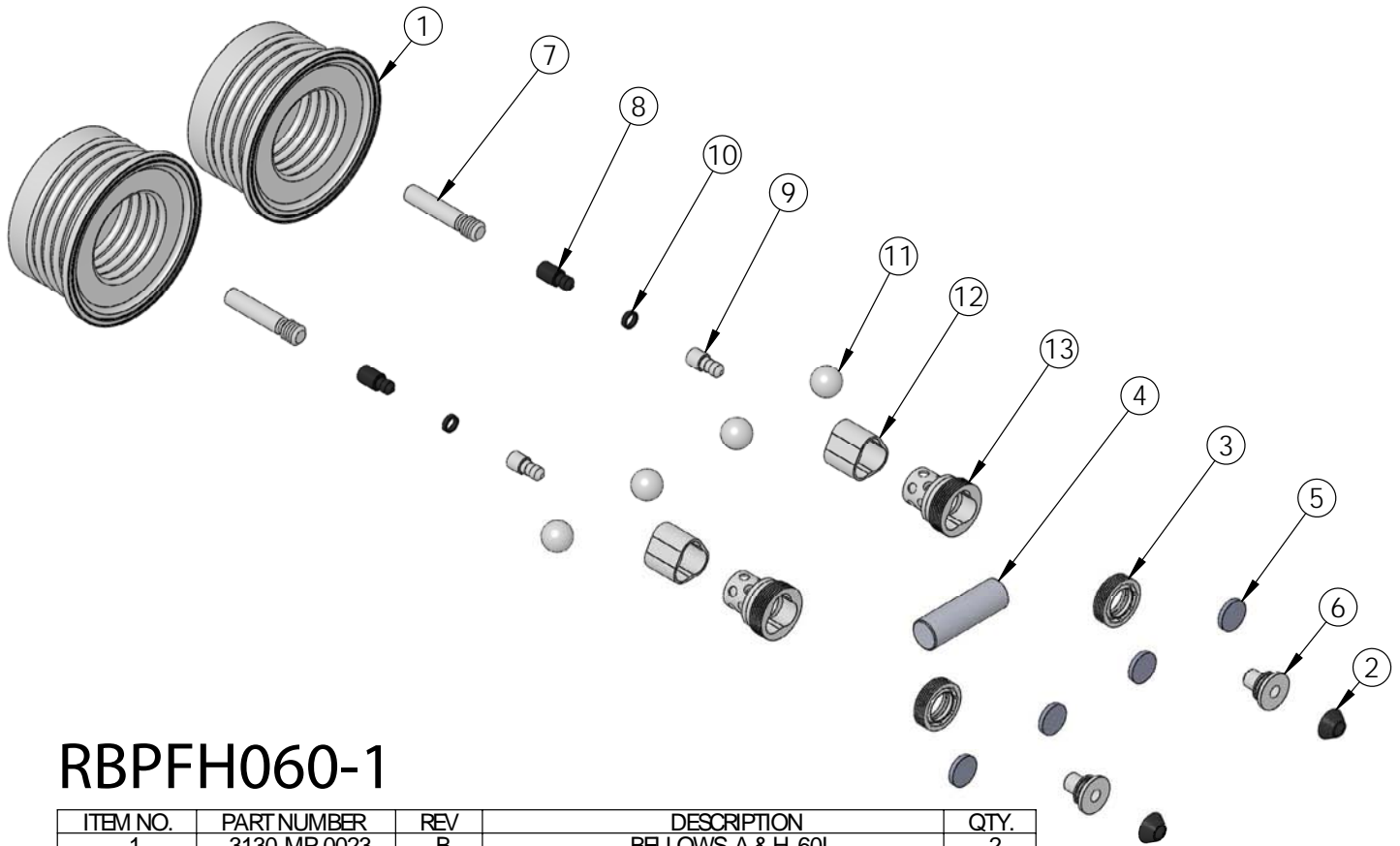
RBPFH060-1 Rebuild Kit

Rebuild kit for PFH060 pump is RBPFH060-1. Rebuild kit for dry-run PFHSD060 pump is RBPFHSD060-1.

To request rebuilds by White Knight, use RBPFH060-5 or RBPFHSD060-5.

Contact White Knight for details. Pump rebuilds require tool kit: 12200-XX-0031 (Legacy# PFH060-170).

Note: Dry-run RBPFHSD060-1 pump rebuild kits include different shaft and shaft seals.



RBPFH060-1

ITEM NO.	PART NUMBER	REV	DESCRIPTION	QTY.
1	3130-MP-0023	B	BELLOWS, A & H, 60L	2
2	3200-VI-0001	B	DIAPHRAGM, Ø .782	2
3	5143-MP-0012	A	SEAL, SHAFT, A&H, 60L	2
4	5144-PF-0023	A	SHAFT, SOLID, PFA, 60L	1
5	6140-FP-0002	A	BAFFLE, .800"	4
6	6150-UH-0001	B	SEAT, QEV EXHAUST, 30L & 60L	2
7	8140-TE-0005	B	STEM, SD TARGET, 60L	2
8	8150-BP-0001	A	EXTENSION, TARGET, UNIVERSAL	2
9	8150-TE-0005	A	EXTENSION, TARGET, .145	2
10	8160-BP-0005	A	BLANK, TARGET, .145	2
11	4100-MP-0001	A	CHECK BALL - 3/4"	4
12	4135-MP-0001	A	BOTTOM CHECK SEAT- 10GPM HIGH FLOW	2
13	4142-MP-0001	A	TOP CHECK CAGE-10GPM HIGH FLOW	2

