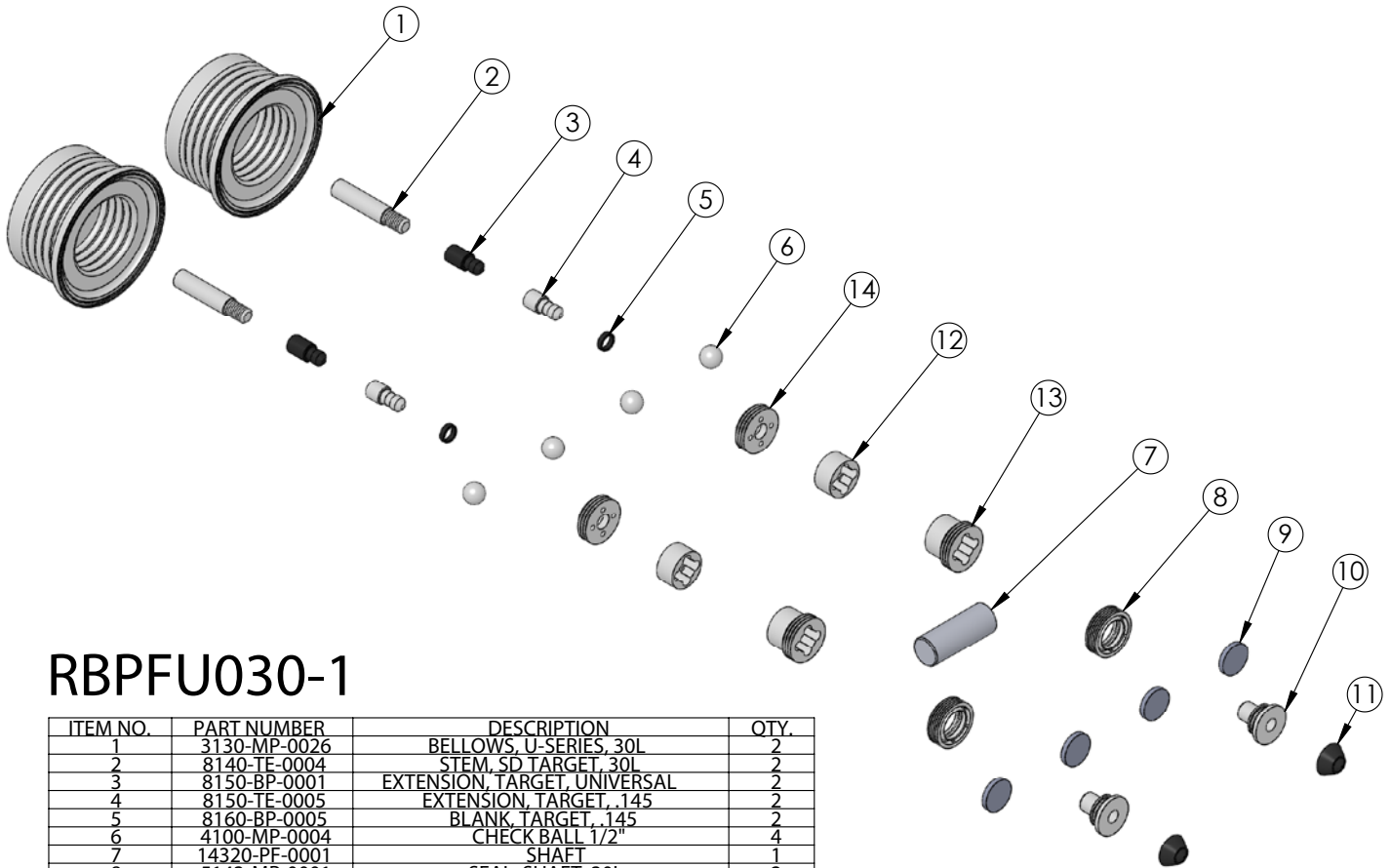




RBPFU030-1 Rebuild Kit

Rebuild kit for PFU030 pump is RBPFU030-1. Rebuild kit for dry-run PFUSD030 pump is RBPFUSD030-1. To request rebuilds by White Knight, use RBPFU030-5 or RBPFUSD030-5. Contact White Knight for details. Pump rebuilds require tool kit: 12200-XX-0032 (Legacy# PFU030-170).

Note: Dry-run RBPFUSD030-1 pump rebuild kits include different shaft and shaft seals.



RBPFU030-1

ITEM NO.	PART NUMBER	DESCRIPTION	QTY.
1	3130-MP-0026	BELLOWS, U-SERIES, 30L	2
2	8140-TE-0004	STEM, SD TARGET, 30L	2
3	8150-BP-0001	EXTENSION, TARGET, UNIVERSAL	2
4	8150-TE-0005	EXTENSION, TARGET, .145	2
5	8160-BP-0005	BLANK, TARGET, .145	2
6	4100-MP-0004	CHECK BALL 1/2"	4
7	14320-PF-0001	SHAFT	1
8	5143-MP-0001	SEAL, SHAFT, 30L	2
9	6140-FP-0002	BAFFLE, .800"	4
10	6150-UH-0001	SEAT, OEV EXHAUST, 30L & 60L	2
11	3200-VI-0001	DIAPHRAGM, Ø.782	2
12	4137-TE-0001	BOTTOM CHECK CAGE-5GPM	2
13	4142-MP-0005	30L U-Series Top Check Seat (Hi-Flow)	2
14	4135-MP-0007	SEAT, CHECK	2

