



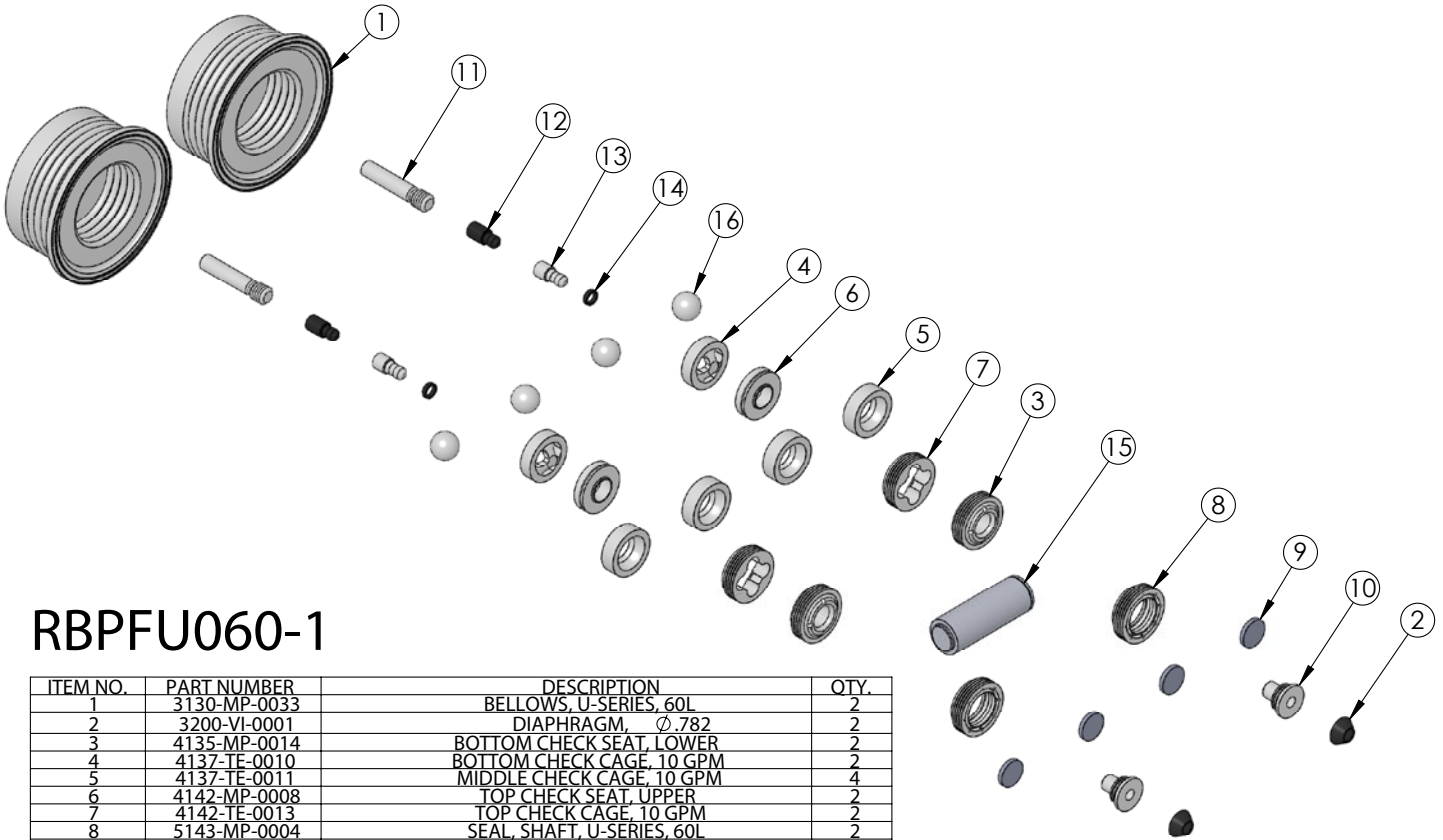
WHITE KNIGHT
.....engineer approved™

PUMP REBUILD KIT

RBPFU060-1 Rebuild Kit

Rebuild kit for PFU060 pump is RBPFU060-1. Rebuild kit for dry-run PFASD060 pump is RBPFFASD060-1. To request rebuilds by White Knight, use RBPFU060-5 or RBPFFUSD060-5. Contact White Knight for details. Pump rebuilds require tool kit: 12200-XX-0033 (Legacy# PFU060-170).

Note: Dry-run RBPFFUSD060-1 pump rebuild kits include different shaft and shaft seals.



RBPFU060-1

ITEM NO.	PART NUMBER	DESCRIPTION	QTY.
1	3130-MP-0033	BELLOWS, U-SERIES, 60L	2
2	3200-VI-0001	DIAPHRAGM, Ø.782	2
3	4135-MP-0014	BOTTOM CHECK SEAT, LOWER	2
4	4137-TE-0010	BOTTOM CHECK CAGE, 10 GPM	2
5	4137-TE-0011	MIDDLE CHECK CAGE, 10 GPM	4
6	4142-MP-0008	TOP CHECK SEAT, UPPER	2
7	4142-TE-0013	TOP CHECK CAGE, 10 GPM	2
8	5143-MP-0004	SEAL, SHAFT, U-SERIES, 60L	2
9	6140-FP-0002	BAFFLE, .800"	4
10	6150-UH-0001	SEAT, OEV EXHAUST, 30L & 60L	2
11	8140-TE-0005	STEM, SD TARGET, 60L	2
12	8150-BP-0001	EXTENSION, TARGET, UNIVERSAL	2
13	8150-TE-0005	EXTENSION, TARGET, .145	2
14	8160-BP-0005	BLANK, TARGET, .145	2
15	14320-PF-0004	LOADED SHAFT ASSEMBLY, 60L, U-SERIES, CERAMIC	1
16	4100-MP-0001	CHECK BALL-.3/4"	4

<https://wkfluidhandling.com/pfu-series/>

