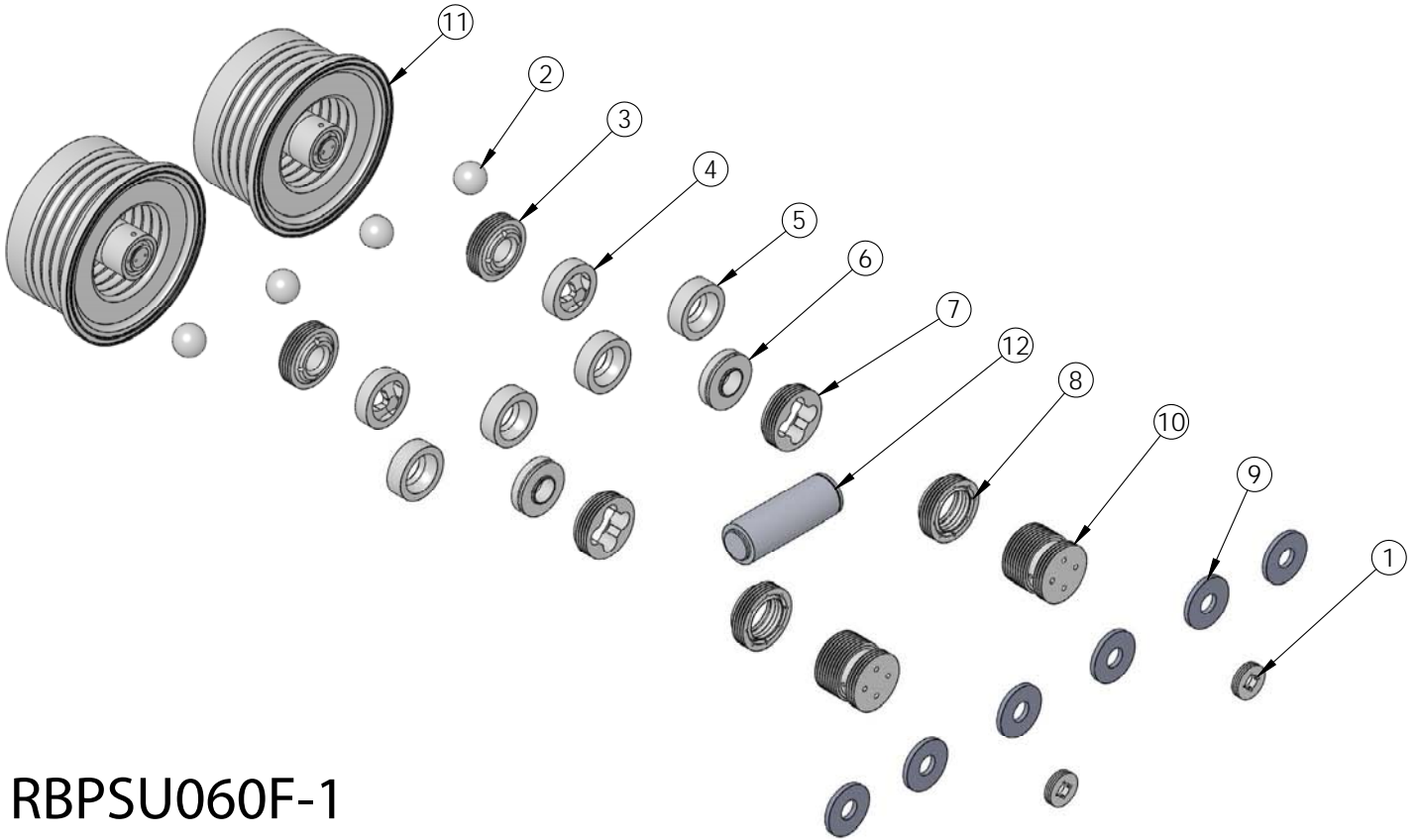


RBPSU060F-1 Rebuild Kit

Rebuild kit for PSU060F pump is RBPSU060F-1. Rebuild kit for dry-run PSUSD060F pump is RBPSUSD060F-1. To request rebuilds by White Knight, use RBPSA060F-5 or RBPSASD060F-5. Contact White Knight for details. Pump rebuilds require tool kit: 12200-XX-0026 (Legacy# PSU060-170).

Note: Dry-run RBPSUSD060F-1 pump rebuild kits include different shaft and shaft seals.



RBPSU060F-1

ITEM NO.	PART NUMBER	DESCRIPTION	QTY.
1	3133-TE-0006	REPLACEABLE SEAT, SHIFT, UNIVERSAL	2
2	4100-PF-0001	CHECK BALL-.3/4"	4
3	4135-MP-0014	BOTTOM CHECK SEAT, LOWER	2
4	4137-TE-0010	BOTTOM CHECK CAGE, 10 GPM	2
5	4137-TE-0011	MIDDLE CHECK CAGE, 10 GPM	4
6	4142-MP-0008	TOP CHECK SEAT, UPPER	2
7	4142-TE-0013	TOP CHECK CAGE, 10 GPM	2
8	5143-MP-0004	SEAL, SHAFT, U-SERIES, 60L	2
9	6140-FP-0004	BAFFLE POROUS POLY 60L	6
10	6530-TE-0002	Shuttle End Plug 10 gpm	2
11	14300-MP-0020	BELLOWS ASSEMBLY SHIFT 60 U	2
12	14320-PF-0004	LOADED SHAFT ASSEMBLY, 60L, U-SERIES, CERAMIC	1