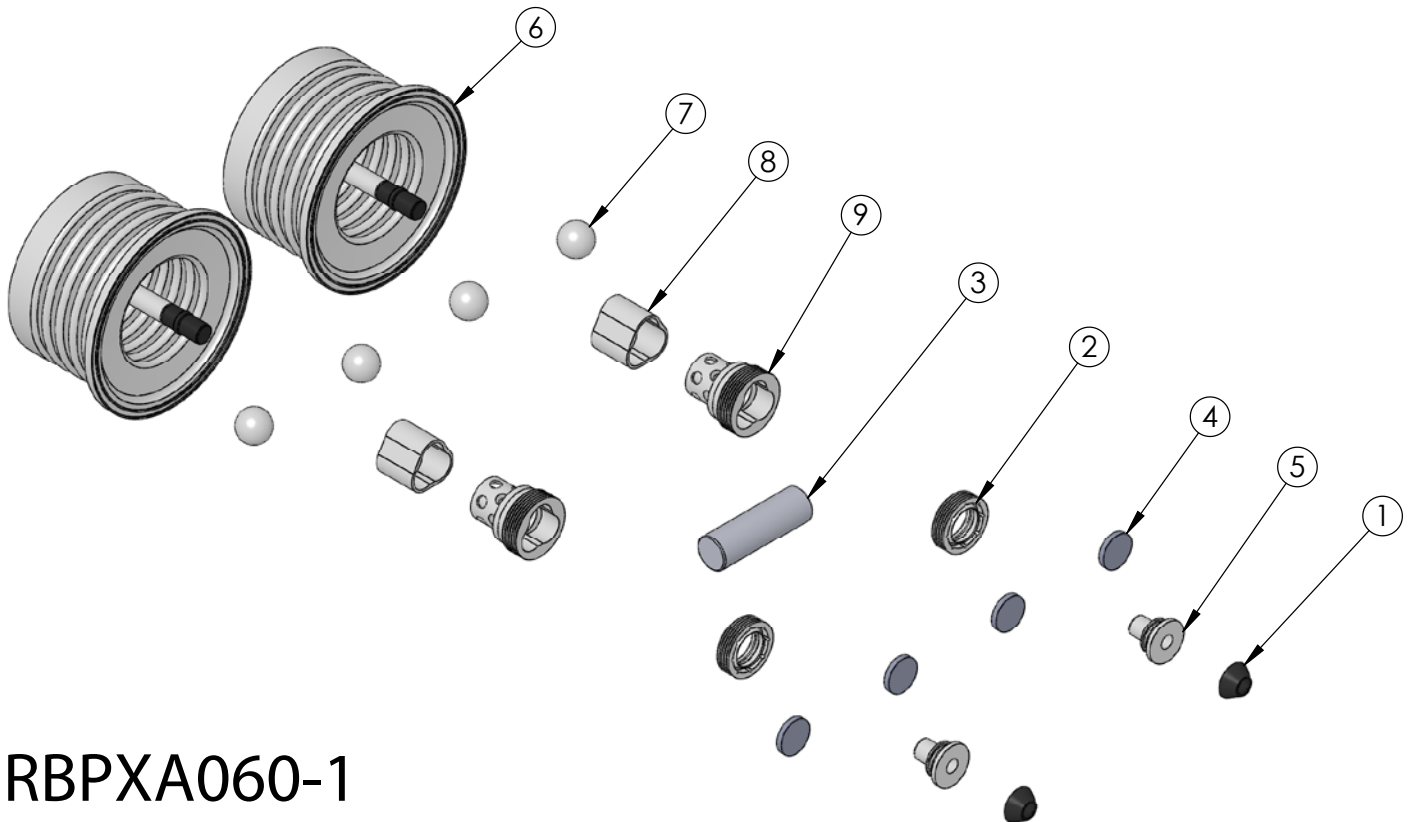




## RBPXA060-1 Rebuild Kit

Rebuild kit for PXA060 pump is RBPXA060-1. Rebuild kit for dry-run PXASD060 pump is RBPXASD060-1. To request rebuilds by White Knight, use RBPXA060-5 or RBPXASD060-5. Contact White Knight for details. Pump rebuilds require tool kit: 12200-XX-0029 (Legacy# PXA060-170).

*Note: Dry-run RBPXASD060-1 pump rebuild kits include different shaft and shaft seals.*



## RBPXA060-1

ITEM NO.	PART NUMBER	DESCRIPTION	QTY.
1	3200-VI-0001	DIAPHRAGM, $\phi$ .782	2
2	5143-MP-0002	SEAL, SHAFT, A&H, 60L	2
3	5144-PF-0023	SHAFT, SOLID, PFA, 60L	1
4	6140-FP-0002	BAFFLE, .800"	4
5	6150-UH-0001	SEAT, QEV EXHAUST, 30L & 60L	2
6	14300-MP-0018	BELLOWS ASSEMBLY	2
7	4100-MP-0001	CHECK BALL-3/4"	4
8	4135-MP-0001	BOTTOM CHECK SEAT- 10GPM HIGH FLOW	2
9	4142-MP-0001	TOP CHECK CAGE-10GPM HIGH FLOW	2

