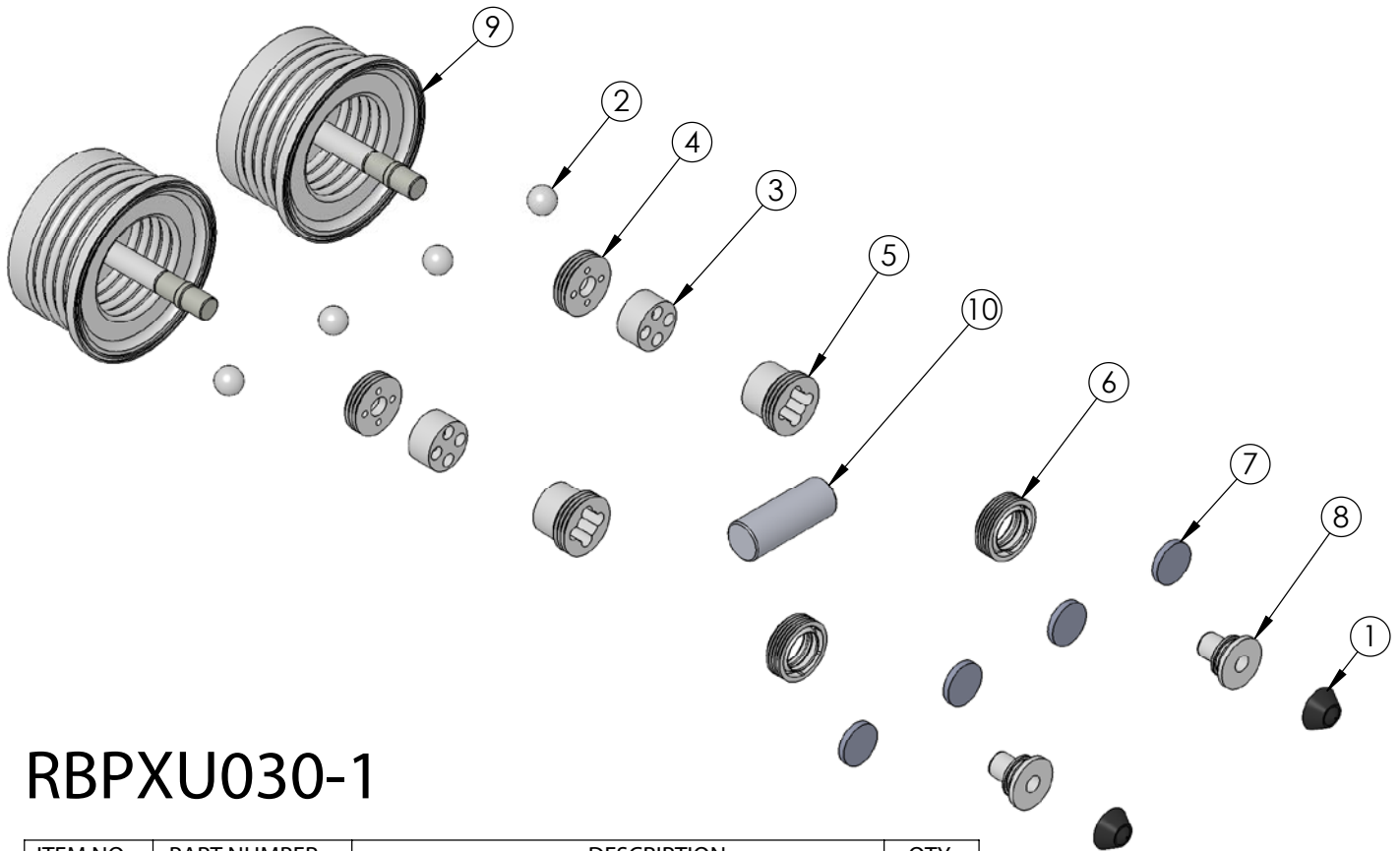




RBPXU030-1 Rebuild Kit

Rebuild kit for PXU030 pump is RBPXU030-1. Rebuild kit for dry-run PXUSD030 pump is RBPXUSD030-1. To request rebuilds by White Knight, use RBPXU030-5 or RBPXUSD030-5. Contact White Knight for details. Pump rebuilds require tool kit: 12200-XX-0032 (Legacy# PXU030-170).

Note: Dry-run RBPXUSD030-1 pump rebuild kits include different shaft and shaft seals.



RBPXU030-1

ITEM NO.	PART NUMBER	DESCRIPTION	QTY.
1	3200-VI-0001	DIAPHRAGM, ϕ .782	2
2	4100-MP-0004	CHECK BALL 1/2"	4
3	4137-TE-0001	BOTTOM CHECK CAGE-5GPM	2
4	4135-MP-0007	SEAT, CHECK	2
5	4142-MP-0005	SEAT, CHECK	2
6	5143-MP-0001	SEAL, SHAFT, 30L	2
7	6140-FP-0002	BAFFLE, .800"	4
8	6150-UH-0001	SEAT, QEV EXHAUST, 30L & 60L	2
9	14300-MP-0021	BELLOWS ASSEMBLY, PROXIMITY, U-SERIES, 30L	2
10	14320-PF-0001	SHAFT	1

