



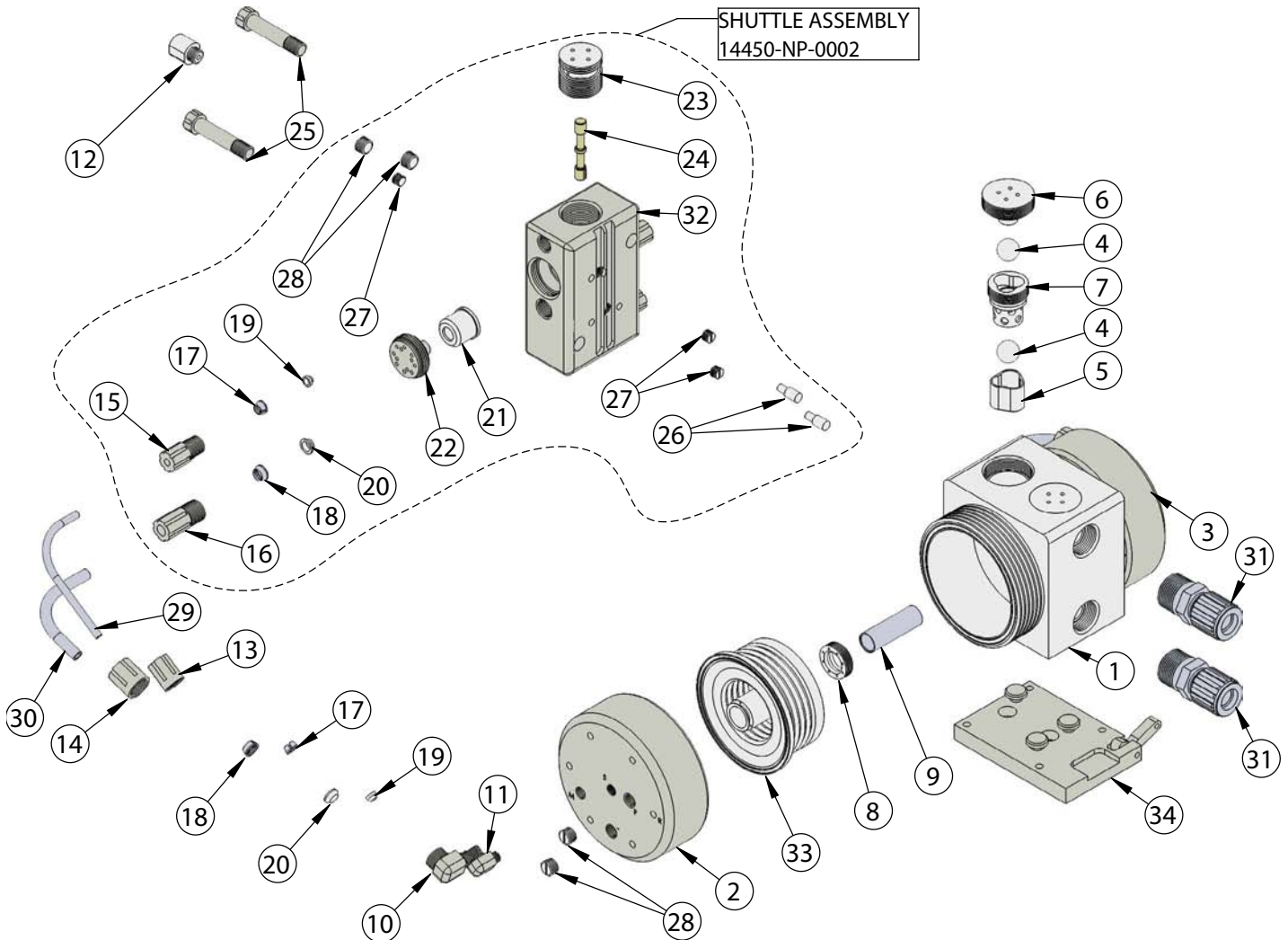
**WHITE KNIGHT®**

.....engineer approved™

# PUMP EXPLODED VIEW

## X100 Exploded View

X100 pumps are legacy models. We recommend users consider PSA060 pumps, which provide better performance, increased flow rates, higher pressure capabilities, improved reliability, extended pump life and warranty periods, as well as shorter lead times. Details: <https://wkfluidhandling.com/psa-series/>



ITEM	PART NUMBER	DESCRIPTION	QTY
1	1125-TE-0011	BODY-X100	1
2	2127-NP-0008	HEAD RIGHT PSR050	1
3	2127-NP-0009	HEAD LEFT PSR050	1
4	4100-TE-0002	CHECK BALL 3/4"	4
5	4135-TE-0002	BOTTOM CHECK SEAT -10GPM REGULAR	2
6	4140-TE-0002	TOP CHECK PLUG-10GPM	2
7	4142-TE-0003	TOP CHECK SEAT-10GPM REGULAR	2
8	5143-TE-0003	SHAFT SEAL-10GPM	2
9	5144-PF-0002	SHAFT -10GPM	1
10	6020-NP-0001	1/4" NPT X 3/8" GRIPPER ELBOW	2
11	6030-NP-0001	1/8" NPT X 1/4" GRIPPER ELBOW	2
12	6060-TE-0004	1/4" NPT X 1/4" STRAIGHT ADAPTER	1
13	6070-NP-0001	NUT, GRIPPER, 1/4"	2
14	6070-NP-0002	NUT FEMALE GRIPPER 3/8"	2
15	6070-NP-0004	1/4" MALE GRIPPER NUT	2
16	6070-NP-0006	3/8"-MALE GRIPPER NUT	2
17	6080-KF-0001	1/4" GRIPPER	4

ITEM	PART NUMBER	DESCRIPTION	QTY
18	6080-KF-0002	3/8" GRIPPER	4
19	6080-TE-0001	1/4" FERRULE	4
20	6080-TE-0002	3/8" FERRULE	4
21	6140-TE-0002	10 GPM WHISPER MUFFLER	2
22	6150-NP-0002	10 GPM WHISPER MUFFLER CAP	2
23	6530-TE-0002	SHUTTLE END PLUG 10 GPM	2
24	6560-CE-0002	10 GPM SPOOL	1
25	10010-NP-0003	SHUTTLE SET SCREW	2
26	10020-NP-0003	SHUTTLE PIN	2
27	10040-TE-0002	1/8" NPT PLUG	3
28	10040-TE-0003	NPT PLUG - 1/4"	6
29	10071-PF-0008	1/4" SHIFT AIR LINE ( THICK WALL)	2
30	10071-PF-0010	3/8" PFA TUBING	2
31	14510-PF-0005	10 GPM 3/4" FLARETEK FITTING ASSEMBLY	2
32	14400-NP-0002	10GPM SHUTTLE REPLACEMENT KIT	1
33	14300-MP-0002	BELLOWS ASSEMBLY	2
34	14200-NP-0002	10 GPM BASE PLATE ASSEMBLY	1

<https://wkfluidhandling.com/x-series/>

