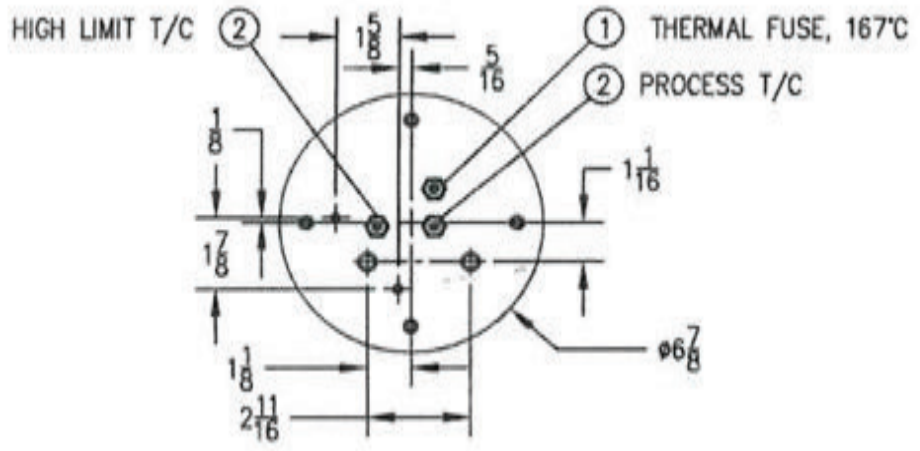


FRONT VIEW

RIGHT VIEW



BOTTOM VIEW

MOUNTING BRACKET & SCREWS REMOVED FOR CLARITY

ITEM	QTY	P/N	DESCRIPTION
01	1	A17613	THERMAL FUSE ASSY, 167°C, 1/4"OD, X 6", 10LEADS
02	2	306272	T/C, TYPE "J", SS BRAIDED, 1/4"OD X 6", 10LEADS

ENGINEERING SPECIFICATIONS

MATERIAL

PROCESS TUBE:	316SS, ELECTROPOLISHED
COOLING TUBE:	316SS
HOUSING:	304SS
INSULATION:	SILICON FOAM

PLUMBING

PROCESS IN/OUT:	TUBE, 0.500"OD X 0.065"WALL
OUTPUT:	TUBE, 0.250"OD X 0.065"WALL
MAX ALLOWABLE WORKING PRESSURE:	22MPa [3200PSI]
MAX ALLOWABLE TEMPERATURE:	175°C [350°F]

ELECTRICAL

VOLT:	208VAC, 1-PH, 50/60Hz
WATTS:	6.8KW
CURRENT:	29AMPS
HIGH LIMIT T/C:	TYPE "J", 10FT
PROCESS T/C:	TYPE "J", 10FT
THERMAL FUSE:	167°C, 10FT
GROUND WIRE:	GREEN, 14GA, 10FT
HEATER LEAD WIRES:	2 WIRES PER HTR X 3 HTRS= 6 WIRES TOTAL BLACK, 14AWG, 10FT
CONDUIT CONNECTOR:	3/4"FNPT

REV	DATE	DESCRIPTION	D.L.
01	03/13/12	SWITCH HI-LIMIT & PROCESS T/C LOCATIONS	DR/FR

CONFIDENTIALITY

UNLESS OTHERWISE NOTED

THIS DRAWING & THE INFORMATION CONTAINED THEREIN IS CONFIDENTIAL & PROPRIETARY TO HEATEFLEX CORPORATION AND MAY NOT BE TRACED, PHOTOGRAPHED, REPRODUCED IN ANY MANNER, NOR USED FOR ANY PURPOSE WHATSOEVER WITHOUT THE EXPRESS WRITTEN AUTHORIZATION OF HEATEFLEX CORPORATION.

DECIMALS in mm

.XX	± 0.01	± 0.25
.XXX	± 0.005	± 0.127
.XXXX	± 0.0005	± 0.0127
X/XX	± 1/32	
∅	± 0.01	± 0.5

405 E. Santa Clara St.
Arcadia, California 91006-7227
Tel: (626) 599-8566
Fax: (626) 599-9567

MECHANICAL LAYOUT
ARIES SERIES
6.8KW, 208VAC, 1-PH

DESIGN BY: M. Tiongco	DATE: 2/06/12	DRW. NO.:	SV-1-06-C-A00	REV:	01
DRAWING NO.:	DATE:	APPROVED BY:	DATE:	SHEET:	2 OF 5
			SCALE:	NONE	
			P&B:	MSV106CA00-1-RO1	