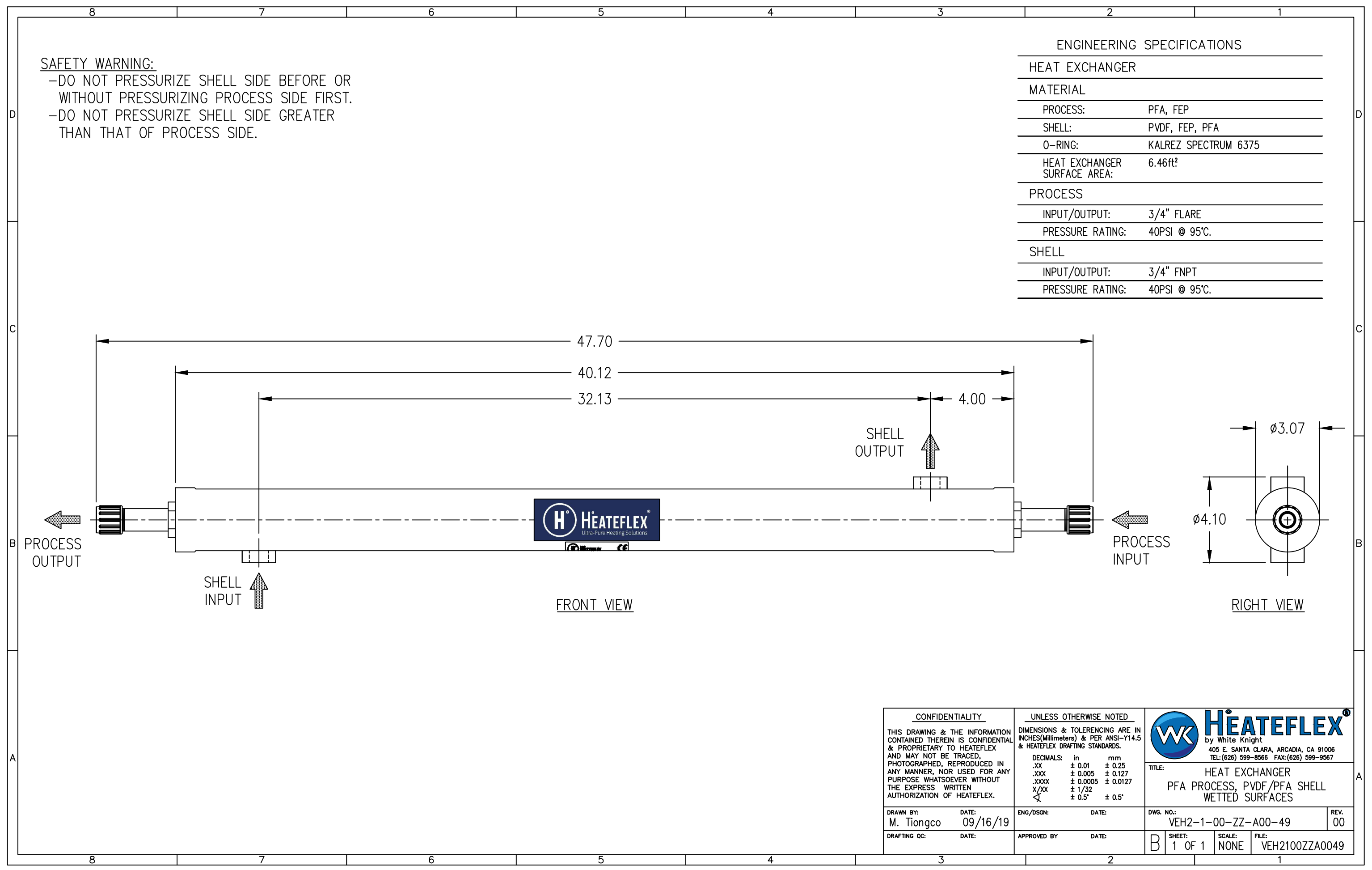


**SAFETY WARNING:**

- DO NOT PRESSURIZE SHELL SIDE BEFORE OR WITHOUT PRESSURIZING PROCESS SIDE FIRST.
- DO NOT PRESSURIZE SHELL SIDE GREATER THAN THAT OF PROCESS SIDE.

ENGINEERING SPECIFICATIONS

HEAT EXCHANGER	
MATERIAL	
PROCESS:	PFA, FEP
SHELL:	PVDF, FEP, PFA
O-RING:	KALREZ SPECTRUM 6375
HEAT EXCHANGER SURFACE AREA:	6.46ft <sup>2</sup>
PROCESS	
INPUT/OUTPUT:	3/4" FLARE
PRESSURE RATING:	40PSI @ 95°C.
SHELL	
INPUT/OUTPUT:	3/4" FNPT
PRESSURE RATING:	40PSI @ 95°C.



<b>CONFIDENTIALITY</b> THIS DRAWING & THE INFORMATION CONTAINED THEREIN IS CONFIDENTIAL & PROPRIETARY TO HEATEFLEX AND MAY NOT BE TRACED, PHOTOGRAPHED, REPRODUCED IN ANY MANNER, NOR USED FOR ANY PURPOSE WHATSOEVER WITHOUT THE EXPRESS WRITTEN AUTHORIZATION OF HEATEFLEX.		<b>UNLESS OTHERWISE NOTED</b> DIMENSIONS & TOLERANCING ARE IN INCHES(Millimeters) & PER ANSI-Y14.5 & HEATEFLEX DRAFTING STANDARDS. DECIMALS: in mm .XX ± 0.01 ± 0.25 .XXX ± 0.005 ± 0.127 .XXXX ± 0.0005 ± 0.0127 X/XX ± 1/32 ∠ ± 0.5° ± 0.5°		<b>Heateflex</b> by White Knight 405 E. SANTA CLARA, ARCADIA, CA 91006 TEL:(626) 599-8566 FAX:(626) 599-9567	
DRAWN BY: M. Tiongco DATE: 09/16/19		ENG/DSGN: DATE:		DWG. NO.: VEH2-1-00-ZZ-A00-49 REV. 00	
DRAFTING QC: DATE:		APPROVED BY DATE:		SHEET: 1 OF 1 SCALE: NONE FILE: VEH2100ZZA0049	