

Configuration

Required Options (Default Model)

PXA140B -F16 - LF0 - SX0 - TF16 -

Pump
Model

Check
Balls

Inlet
Fitting

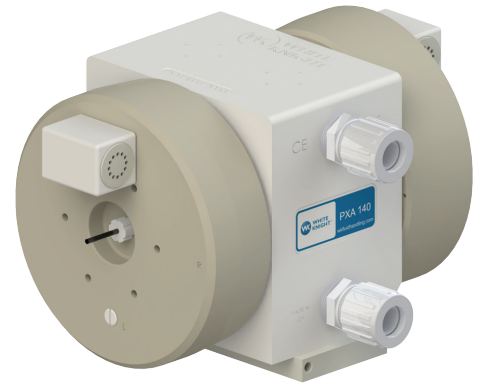
Additional Options (Blank if not needed)

Leak
Detect

Stroke
Detect

Outlet
Fitting

Revision



Instructions

Select all Required Options.

Only add Additional Options if desired.

Only add Outlet Fitting if different than Inlet Fitting.

Contact support for revision or copy exact information.

Required Options

Default options are highlighted

Model

Standard Model PXA140B

Check Balls

PTFE Check balls *blank*
PFA Check balls F

Inlet Fitting

Front straight only

	1/2 in.	F08
	3/4 in.	F12
	1 in.	F16
	1-1/4 in.	F20
	3/4 in.	T12
	1 in.	T16
	1-1/4 in.	T20
	1-1/2 in.	T24
	3/4 in.	W12
	1 in.	W16
	1/2 in.	P08
	3/4 in.	P12
	1 in.	P16
	1-1/4 in.	P20
	1-1/2 in.	P24
	3/4 in.	N12
	1 in.	N16
	1-1/4 in.	N20
	1/2 in.	S08
	3/4 in.	S12
	1 in.	S16
	3/4 in.	L12
	1 in.	L16
	1-1/4 in.	L20

Additional Options

Leak Detection

No leak detection	<i>blank</i>
15 ft fiber optic cable with no amplifier	LF0
15 ft fiber optic cable with D10 amplifier	LF1
25 ft fiber optic cable with no amplifier	LF2
25 ft fiber optic cable with D10 amplifier	LF3
15 ft conductivity cable	LC0
25 ft conductivity cable	LC1

Stroke Detection

No stroke detection	<i>blank</i>
15 ft NPN normally open proximity switch	SX2
15 ft PNP normally open proximity switch	SX3

* Proximity switch ordered separately. Proximity switch is required for operation. Standard configuration does NOT include proximity switch.










Timer mode operation requires end-of-stroke detection. Use of timer mode without stroke detection voids the warranty.

This pump includes Quick Exhaust Valves (QEV). QEVs must be used with this pump. Operating it without QEVs voids its warranty. Customers may use their own QEVs with the optional NPT adapter.

Outlet Fitting

Straight only. Select Top or Front.

		Front	Top
Same as Inlet Fitting		<i>blank</i>	n/a
	1/2 in.	FF08	TF08
	3/4 in.	FF12	TF12
	1 in.	FF16	TF16
	1-1/4 in.	FF20	TF20
	3/4 in.	FT12	TT12
	1 in.	FT16	TT16
	1-1/4 in.	FT20	TT20
	1-1/2 in.	FT24	TT24
	3/4 in.	FW12	TW12
	1 in.	FW16	TW16
	1/2 in.	FP08	TP08
	3/4 in.	FP12	TP12
	1 in.	FP16	TP16
	1-1/4 in.	FP20	TP20
	1-1/2 in.	FP24	TP24
	3/4 in.	FN12	TN12
	1 in.	FN16	TN16
	1-1/4 in.	FN20	TN20
	1/2 in.	FS08	TS08
	3/4 in.	FS12	TS12
	1 in.	FS16	TS16
	3/4 in.	FL12	TL12
	1 in.	FL16	TL16
	1-1/4 in.	FL20	TL20

Leave blank if Front and same as Inlet Fitting. Select option if Top or different than Inlet Fitting.

Revision

No revision *blank*

Contact White Knight support for revision level or copy exact code activation details. Configured part numbers are not Copy Exact Part Numbers.
Email: support@wkfluidhandling.com
Phone: 435.783.6040