



PXA060 Owner's Manual



Table of Contents

1. Product Information	1
1.1 Specifications & Performance	1
1.2 Temperature Limits.....	2
1.3 Dimensions	2
1.4 Bill of Materials.....	3
2. Installation	4
2.1 Precautions	4
2.2 Warnings	5
2.3 Advantages	5
2.4 Environment & System.....	5
2.5 Proximity Sensor Installation.....	6
2.6 Installation Instructions.....	7
3. Control & Monitoring	8
3.1 Proximity Detection Wiring Information	9
3.2 Shift Logic for Proximity Pumps	9
3.3 Conductivity Leak Detection Installation.....	10
3.4 Fiber Optic Leak Detection Installation	10
3.5 Calibrating D10 Amplifier for Fiber Optic Leak Detection.....	11
4. Ordering Instructions	12
5. Pump Service	13
5.1 Rebuild Kits & Parts	13
5.2 Return Pump for Service.....	14
6. Warranty & Accessories	16





Dear valued customer,

Thank you for purchasing a White Knight PXA060 pump.

Our dedicated team designs products to meet your exacting specifications with a demonstrated commitment to quality that goes beyond mere words and fancy slogans.

Our patented designs offer a variety of size and material options to meet stringent requirements of high-pressure chemical delivery systems, high-temperature re-circulation processes, chemical reclaim and bulk transport applications, slurry systems, and more. Our safe, reliable products offer superior performance, optimized efficiency, and simplified maintenance.

White Knight is able to provide the highest quality fluid handling products through controlled, consistent in-house engineering and manufacturing. Through continued significant investments in engineering and manufacturing, we lead the industry with new technologies and products.

White Knight has received numerous awards for innovation and manufacturing programs. We rigorously manage our quality assurance processes to ensure consistency and reliability. Our quality controls include strict cleanliness procedures and consistent manufacturing processes. For example, high-purity product assembly, testing, and packaging is performed in a Class 100 cleanroom.

Please peruse this manual before installing your White Knight product. It details installation requirements and setup instructions, and provides additional information and accessories for enhanced functionality.

Our team has gone to great lengths to ensure our products serve your needs and meet your requirements.

Further, we provide the highest quality products at the best value, and we back them up with excellent warranties and world class support.

Thank you for your confidence and trust in White Knight products.

Sincerely,

White Knight Fluid Handling





1. Product Information

1.1 Specifications & Performance

Model	PXA060	PXASD060
Max Flow Rate*	68.1 lpm (17.99 gpm)	66.24 lpm (17.5 gpm)
Displacement Per Cycle*	0.216 liters (0.057 gal)	0.216 liters (0.057 gal)
Cycles per min	366 max	330 max
Air Connection	1/4 in	1/4 in
Weight	4.8 kg (10.6 lb)	4.8 kg (10.6 lb)
Suction Lift*	3 m (10 ft)	Flooded suction
Sound	Pressure**	68.6 dB(a) at 100 psi 50 CPM 82.12 dB(a) at 100 psi max CPM
	Power**	60.66 dB(a) at 100 psi 50 CPM 73.35 dB(a) at 100 psi max CPM

* May vary by configuration or system. Suction lift diminishes over time. Recommended installation level less than 3 ft above source. To calculate displacement, divide flow rate by CPM.

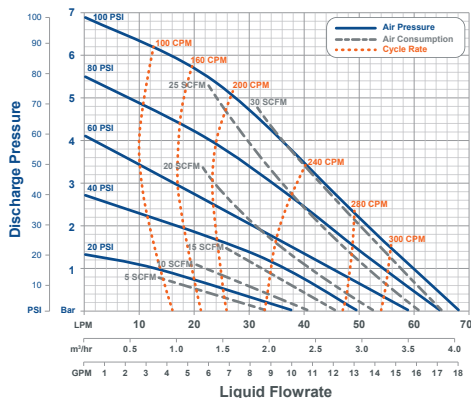
** Sound measured in accordance with ISO9614-2:1997.

*** Dry-run capable PXASD060 pumps require flooded suction and may have reduced warranty. Contact support for details.

Max Fluid Temperature	100°C (212°F)
Environmental Temperature	min: 0°C (32°F) max: 50°C (122°F)
Max Supply Air Pressure	7 Bar (100 psi)
Min Startup Air Pressure	1.4 Bar (20 psi)
Fluid Path Materials	PTFE, PFA
Non-Fluid Path Materials	PTFE, PFA, PP, SS

Stroke Detection	Proximity stroke detection
Leak Detection	Fiber optic with or without sensor, or conductivity
Electronic Control	CPC, CPT, or custom. Call for details.

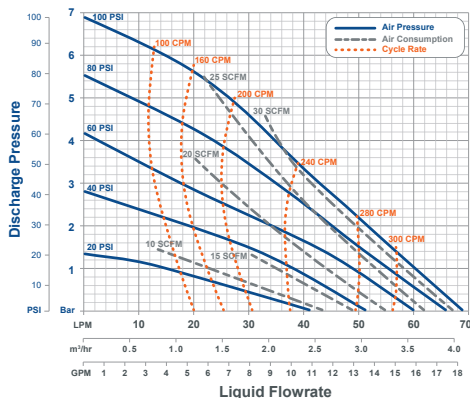
PXA060 Performance



How to Read Charts

Draw a horizontal line at your discharge pressure and vertical line at desired flow rate. At line intersect, estimate required air pressure, resultant cycle rate and air consumption.

PXASD060 Performance



Example

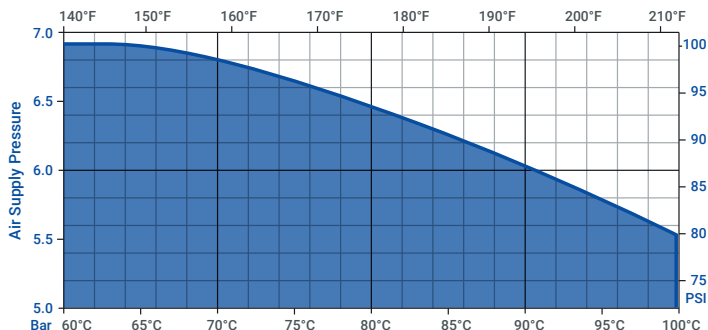
At 2 Bar (30 psi) discharge pressure and 60 psi supply pressure, PXA060 pumps provide 30 lpm (8 gpm) flow rates. They would cycle at 220 CPM and exhaust 20 SCFM of air.

*Graph is for reference only. Performance was measured utilizing 1/2 in (3/8 in ID) air line and 1-1/4 in (1-1/8 in ID) liquid lines with 1 ft flooded suction. Performance may vary in your system.



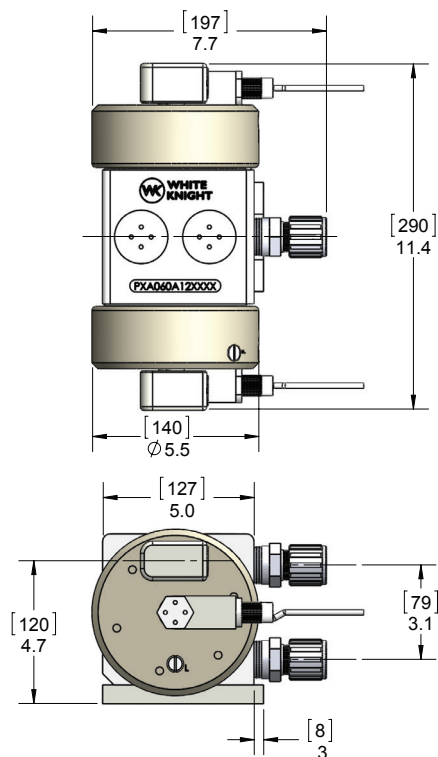


1.2 Temperature Limits

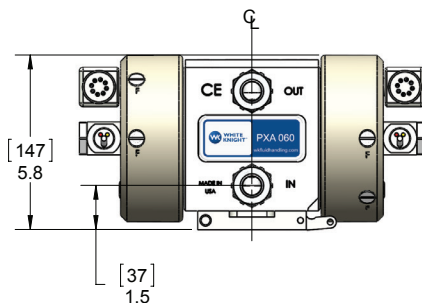
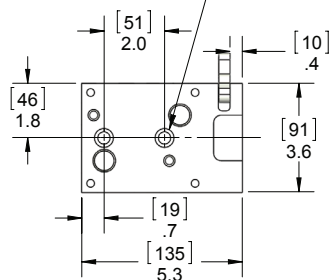


1.3 Dimensions

Dimensions in [mm] in



MOUNT WITH 2 EA.
3/8" (10 mm) SOCKET
HEAD CAP SCREWS

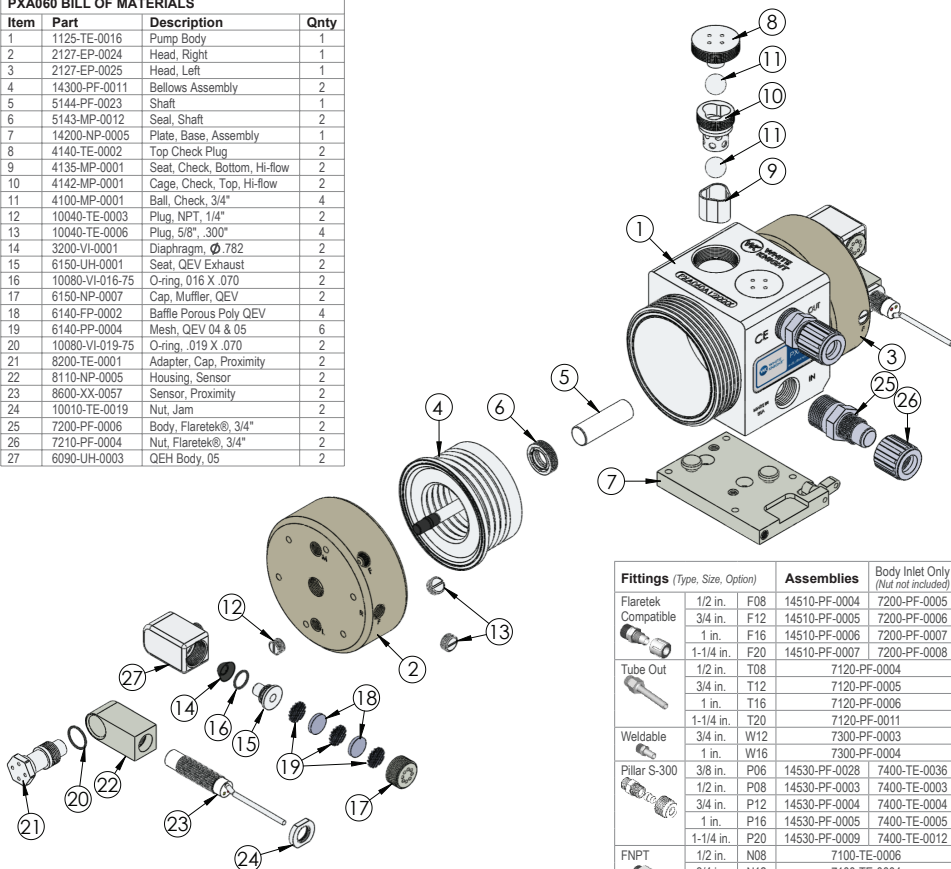




1.4 Bill of Materials

PXA060 BILL OF MATERIALS

Item	Part	Description	Qty
1	1125-TE-0016	Pump Body	1
2	2127-EP-0024	Head, Right	1
3	2127-EP-0025	Head, Left	1
4	14300-PF-0011	Bellows Assembly	2
5	5144-PF-0023	Shaft	1
6	5143-MP-0012	Seal, Shaft	2
7	14200-NP-0005	Plate, Base, Assembly	1
8	4140-TE-0002	Top Check Plug	2
9	4135-MP-0001	Seat, Check, Bottom, Hi-flow	2
10	4142-MP-0001	Cage, Check, Top, Hi-flow	2
11	4100-MP-0001	Ball, Check, 3/4"	4
12	10040-TE-0003	Plug, NPT, 1/4"	2
13	10040-TE-0006	Plug, 5/8", .300"	4
14	3200-VI-0001	Diaphragm, Ø .782	2
15	6150-UH-0001	Seat, QEV Exhaust	2
16	10080-VI-016-75	O-ring, .016 X .070	2
17	6150-NP-0007	Cap, Muffler, QEV	2
18	6140-FP-0002	Baffle Porous Poly QEV	4
19	6140-PP-0004	Mesh, QEV Ø4 & Ø5	6
20	10080-VI-019-75	O-ring, .019 X .070	2
21	8200-TE-0001	Adapter, Cap, Proximity	2
22	8110-NP-0005	Housing, Sensor	2
23	8600-XX-0002	Sensor, Proximity	2
24	10010-TE-0019	Nut, Jam	2
25	7200-PF-0006	Body, Flaretek®, 3/4"	2
26	7210-PF-0004	Nut, Flaretek®, 3/4"	2
27	6090-UH-0003	QEH Body, .05	2



Leak Detect

Part	Description
14600-XX-0009	LF0 15 ft fiber optic cable with no amplifier
14600-XX-0010	LF1 15 ft fiber optic cable with D10 amplifier
14600-XX-0011	LF2 25 ft fiber optic cable with no amplifier
14600-XX-0012	LF3 25 ft fiber optic cable with D10 amplifier
14600-XX-0031	LC0 15 ft conductivity cable
14600-XX-0040	LC1 25 ft conductivity cable

Stroke Detect

Part	Description
14700-XX-0029	SX1 15 ft PNP normally open proximity switch

Fittings (Type, Size, Option)	Assemblies	Body Inlet Only (Not included)
Flaretek Compatible	1/2 in. F08	14510-PF-0004 7200-PF-0005
	3/4 in. F12	14510-PF-0005 7200-PF-0006
	1 in. F16	14510-PF-0006 7200-PF-0007
	1-1/4 in. F20	14510-PF-0007 7200-PF-0008
Tube Out	1/2 in. T08	7120-PF-0004
	3/4 in. T12	7120-PF-0005
	1 in. T16	7120-PF-0006
	1-1/4 in. T20	7120-PF-0011
Weldable	3/4 in. W12	7300-PF-0003
	1 in. W16	7300-PF-0004
Pillar S-300	3/8 in. P06	14530-PF-0028 7400-TE-0036
	1/2 in. P08	14530-PF-0003 7400-TE-0003
	3/4 in. P12	14530-PF-0004 7400-TE-0004
	1 in. P16	14530-PF-0005 7400-TE-0005
	1-1/4 in. P20	14530-PF-0009 7400-TE-0012
FNPT	1/2 in. N08	7100-TE-0006
	3/4 in. N12	7100-TE-0004
	1 in. N16	7100-TE-0008
Synchro-Flare	1/2 in. S08	14520-TE-0003 7010-TE-0005
	3/4 in. S12	14520-TE-0004 7010-TE-0004
PrimeLock	1 in. S16	14520-TE-0006 7010-TE-0006
	1/2 in. L08	14570-PF-0003 7800-TE-0003
	3/4 in. L12	14570-PF-0004 7800-TE-0004
	1 in. L16	14570-PF-0005 7800-TE-0005
Plugged	1-1/4 in. L20	14570-PF-0012 7800-TE-0012
	B00	7130-TE-0003





2. Installation

2.1 Precautions

Handling

Do NOT lift pump by proximity cables, quick exhaust valves nor air tubing.

Installation Orientation

PXA060 pumps must be installed in an upright position. The check valves are actuated by gravity and/or flow, and they will not seat if the pump is not upright. Do not install pumps within 3 ft of each other or it may interfere with proximity sensors.

Timer Mode

PXA060 pumps require an end of stroke detection mechanism (pressure switch) to prevent over stroking in timer mode. Operating a PXA060 in timer mode without stroke detection will void the pump warranty.

Required Air Flow (Shuttle Valve)

PXA060 pumps require 1/4 in minimum orifice with unrestricted air flow.

Required Air Flow (Solenoid Valve)

PXA060 pumps require a 1.5 Cv solenoid. Using a reduced Cv will reduce flow rates. Using a valve with more than 20% greater Cv will change operating parameters, reduce pump life and void the warranty.

Under Supply of Air

PXA060 pumps operate erratically or stall when air supply is insufficient. Ensure use of air supply pressures higher than averaged air consumption lines in performance charts. Air supply lines and fittings must meet minimal inner diameter requirements shown in the installation instructions.

Air Supply Pressure

Operating PXA060 pumps ~35% below max air pressure may significantly extend pump life. PXA060 pumps require 20 psi minimum air pressure. Operation above 7 Bar (100 psi) may damage the pump and void the warranty.

Using Proximity Sensors

Pumps using a proximity sensor are not intrinsically safe and do not qualify for use in explosion-proof environments.

Suction Lift

PXA060 pumps have initial suction lift of 3 ft. For best results minimize suction lift.

Liquid Inlet/Outlet Connections

PXA060 liquid ports are not NPT nor any other standard. Use of connectors other than those supplied by White Knight will damage the pump and void the warranty.

Liquid Line Restriction

PXA060 pumps may be controlled by closing liquid outlet lines. However, restricting liquid supply lines increases wear and should be avoided. Do NOT pump against a closed liquid inlet. It will damage the pump and void the warranty.

Running Dry

PXA060 pumps use the pumped liquid to lubricate their shafts. The pumps will cycle faster and wear more than normal when run dry, which may cause damage and loss of self-prime abilities. Standard models should not be run dry after start-up and are not warrantied under dry run conditions. Dry-run capable PXASD060 models may run dry for short periods. Warranty of dry-run models is one-year. Extended warranties are available.

Pulse Dampener with Shuttle Valve

Air supply pressure to PXA060 pumps should be at least ten psi higher than the liquid line pressure when using a pulsation dampener. Failure to do so may cause erratic operation.

Cross Contamination

PXA060 pumps use porous material that may retain chemicals. Take precautions to avoid cross contamination.



2.2 Warnings

Pressurized Material



Pumps in use contain pressurized materials. Eliminate liquid and air pressure via shut off valves before pump is serviced or removed from the system.

High Temperature



Heat may transfer to exterior surfaces when pumps operate with high temperature fluids. Avoid direct contact with the pump when high temperature fluids are present.

Hazardous Chemical



Use appropriate personal protective equipment when handling pump. Reference Material Safety Data Sheet (MSDS) for information specific to your chemicals.

Loud Noise



Pump exhaust air contributes to work area noise levels. Only operate pumps with approved muffler media, and use ear protection in noisy conditions.

2.3 Advantages

Head Pressure / Dead-Head

PXA060 pumps can be controlled by adjusting their liquid outlet pressures and can be installed with head pressures up to dead-head (e.g. equal liquid and air pressures) with no damage to the pump.

Thermal Cycling

PXA060 pumps require no maintenance when operated within their performance range, even in thermal cycling applications.

2.4 Environment & System

Oversized Inlet Line

Pumps operate optimally with liquid inlet lines larger than the liquid outlet lines. This reduces strain on the bellows and may reduce pulsation in the pump outlet.

Clean Supply Air (CDA)

PXA060 pumps require use of Class 2 air for particles and moisture per ISO 8573-1. Use 10 micron filter; maintain -40°C dew point. A point-of-use filter is recommended during first six months of operation in new fabs/systems due to high risks of debris that can damage pumps and void warranty.

Flammable Solvents

PXA060 pumps are not constructed from conductive materials. System that pump flammable solvents should be properly grounded to avoid ignition by static charge. A River's Edge test of isolative pumps with flammable liquids indicated that liquids must be grounded and other procedures should be followed. Copy of test available.

Pumping Liquids Near Boiling Point

Minimizing suction lift reduces pulsation and the potential for boiling or outgassing of liquid in the inlet of the pump. Although reciprocating pumps can pull suction lift, pump performance and life increase when suction lift is minimized or eliminated.

Abrasive Slurry

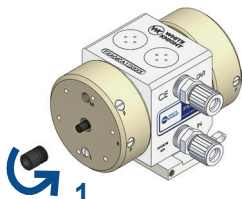
Pumping abrasive slurry may accelerate wear of components. PXA060 pumps are warranted when used with slurry. However, normal wear is not covered by warranty.

Environmental Temperature

PXA060 pumps are rated for 0°C (32°F) - 50°C (122°F) environmental temperatures. Do not freeze fluid in pump. Operation below 0°C may accelerate wear. Normal wear is not covered by warranty.

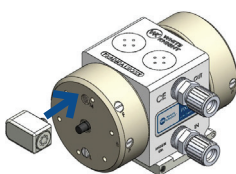


2.5 Proximity Sensor Installation



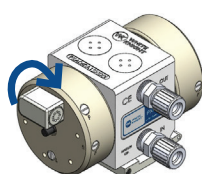
1.

Remove QEV plug.

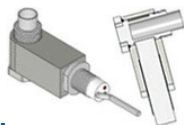


2.

Attach QEV. Thread in NPT.
Do not overtighten.

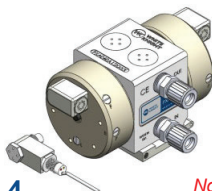


Proximity sensors ship already installed in their housings. Follow steps 2.1-2.3 if sensors are removed from their housings.



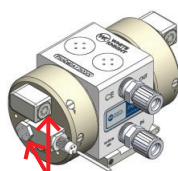
3.

Ensure proximity sensor is properly installed in housing. Tighten to light contact. Tighten lock nut to housing.

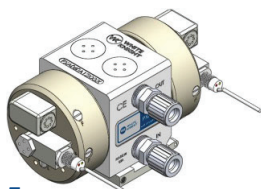


4.

Attach sensor assembly to pump head. Use a crescent wrench to tighten cap. Tighten to bottom out. Do not overtighten.



Note: No gap



5.

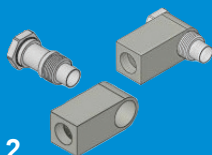
Repeat steps for both pump heads.

Sensor Installation



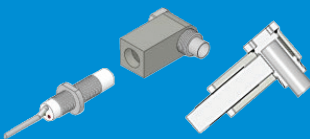
2.1

Ensure O-ring is set on the cap.



2.2

Place cap into housing.



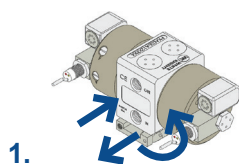
2.3

Ensure proximity sensor is properly installed in housing. Tighten to light contact. Tighten lock nut to housing.

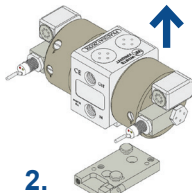


D10 amplifier must be calibrated before attaching fiber optic probes to the pump.

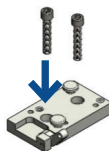
2.6 Installation Instructions



- 1.**
Set lever to up position.
Slide base plate forward
or pump body backward.

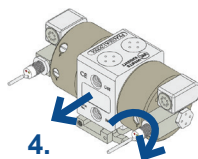


- 2.**
Lift pump off
of base plate.

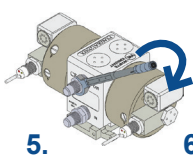


- 3.**
Screw base plate to surface with
3/8 in or 10 mm socket head cap
screws into pre-drilled holes.

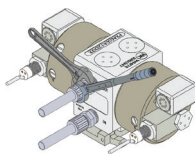
*Pull-back dismount
is standard. See
steps 3.1-3.3 for
forward dismount.*



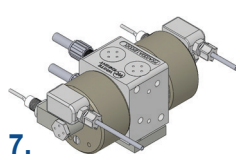
- 4.**
Set pump on base
knobs; slide it
forward. Set lever
to down position.



- 5.**
Attach fittings
to pump.
Tighten to 55
inch-lbs.



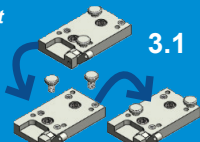
- 6.**
Attach tubes and fittings per
manufacturer instructions.
Use backer wrench to hold
fitting in place at pump.



- 7.**
Set air line via 1/4 in FNPT
ports on quick exhaust
valves. Line must be 1/4 in
minimum orifice.

Push-Forward Dismount Configuration Setup

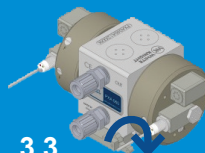
Replace step 4
with steps 3.1-3.3
to re-configure the
base plate to push-
forward dismount.



- 3.1**
Move knobs to
opposite sides.

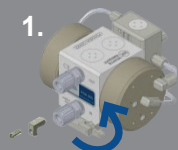


- 3.2**
Set pump on base
knobs; slide it backward.

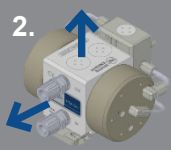


- 3.3**
Move lever down
to locked position.

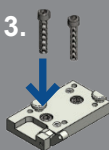
Install with Rigid Base Plate *Requires push-forward dismount configuration (steps 3.1-3.3)



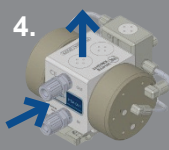
- 1.**
Remove L bracket.
Set lever in neutral
(up) position.



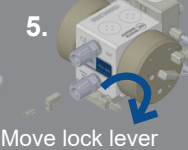
- 2.**
Slide pump
forward; lift it
off base plate.



- 3.**
Fix base plate
to work station.
See step 4 above.



- 4.**
Return
pump to
base plate.



- 5.**
Move lock lever
to down position.
Reattach L bracket.
Tighten to 12 in-lb.

Liquid Inlet/Outlet

Liquid ports are not NPT nor any other standard. Use of connectors other than those supplied by White Knight will damage the pump.





3. Control & Monitoring

Programmable Control

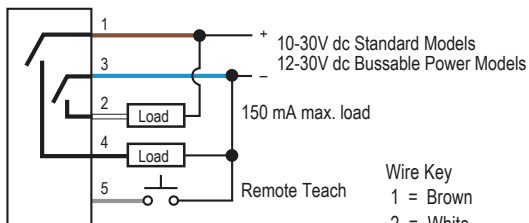
White Knight CPT-1 controllers monitor and adjust run mode, flow rate, leak detection and other pump operations.



D10 Amplifier Electrical Hookups & Dimensions

White Knight recommends Expert™ D10 amplifier for use with fiber optic stroke and leak detection assemblies.

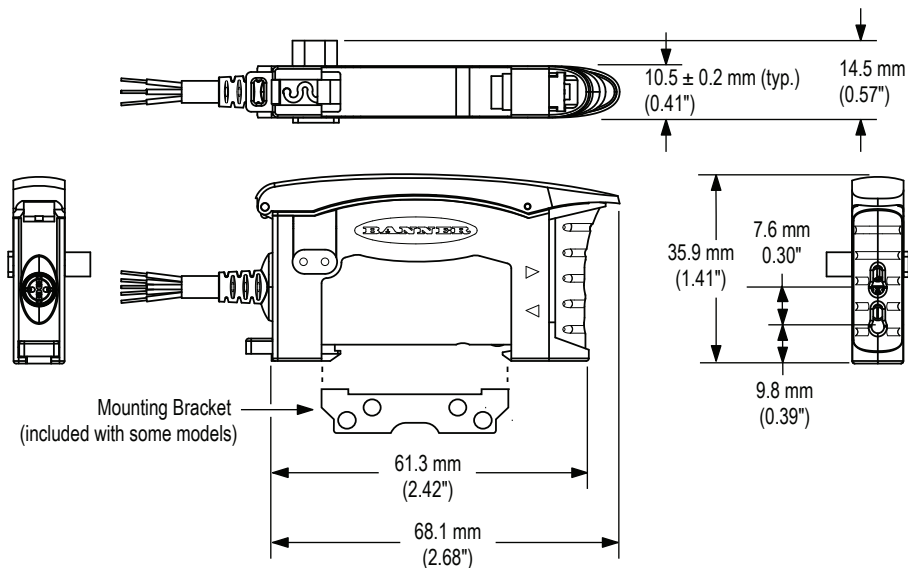
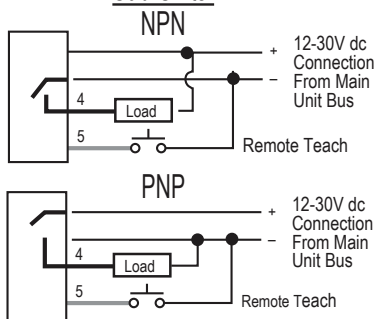
Standard Models and Main Unit



QD hookup is functionally identical (Pink wire not used)

Wire Key
1 = Brown
2 = White
3 = Blue
4 = Black
5 = Gray

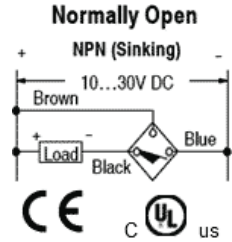
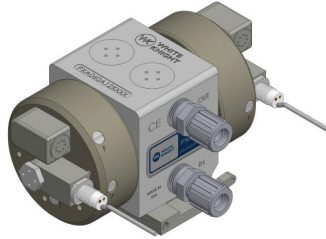
Sub-Units



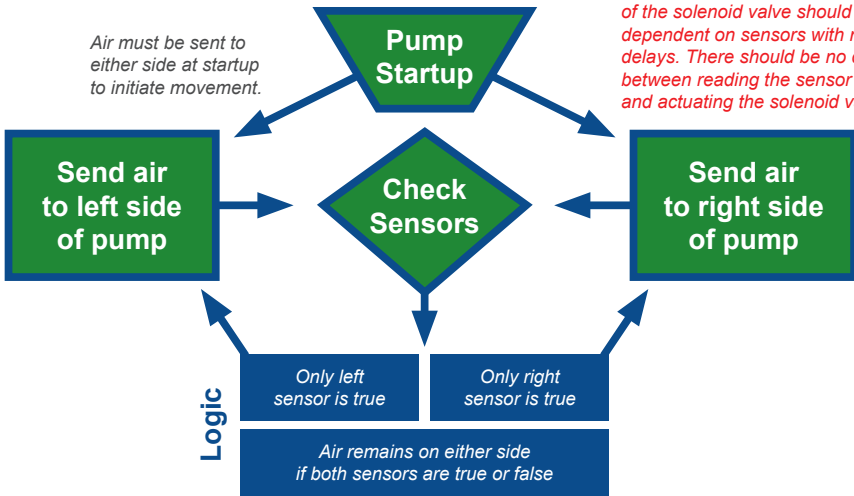


3.1 Proximity Detection Wiring Information

- 10-30 V DC
- ≤ 200 mA
- NPN-normally open
- Listed IND.CONT.EQ 81u2
- For use in the secondary of a Class 2 source of supply
- Use of Proximity Sensors does not qualify for intrinsically safe environments.



3.2 Shift Logic for Proximity Pumps



During pump operation, the timing of the solenoid valve should be dependent on sensors with no time delays. There should be no delay between reading the sensor signal and actuating the solenoid valve.

Proximity End Stroke Operation

Solenoid output												
Left side		on	on	off	off	off	on	on	on	off	off	off
Right Side		off	off	on	on	on	off	off	off	on	on	on
End Stroke Signals												
Left Side		on	off	off	on	on	on	on	off	off	on	on
Right Side		on	on	on	on	off	off	on	on	on	on	off
Switch Solenoid Sides		yes			yes			yes			yes	

* The proximity sensors on the pump can both be seen in the middle of the stroke; thus it is required that the solenoid not be switched until just one sensor is seen.

* Vertical line denotes when the solenoid was switched.





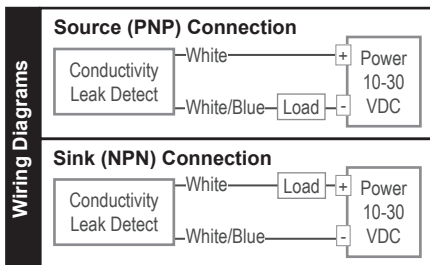
3.3 Conductivity Leak Detection Installation

Leaks are identified if conductive fluid contacts a sensor. Sensor provides a Sink (NPN) or Source (PNP) signal, depending on the wire setup. See the wiring diagrams below.

Conductive leak detection does not qualify for use in explosion-proof environments. Conductive fluid required.

See below for elbow out configuration.

1. Remove leak adapter from assembly.
2. Replace NPT plug in "L" port with probe. Hand Tighten. Attach cable to signal translator (e.g. PLC).



3.4 Fiber Optic Leak Detection Installation

D10 amplifier must be calibrated before attaching fiber optic probes to the pump.

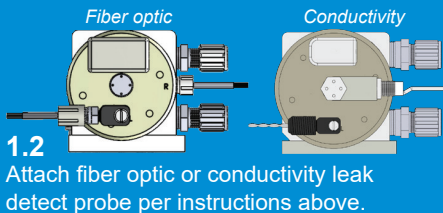
Fiber optic sensors can melt if used at >130°C (266°F), causing leak detect failure.

See below for elbow out configuration.

1. Remove leak adapter and leak detect probe from fiber optic assembly.
2. For straight out configuration replace NPT plug in "L" port with the probe. Hand-tighten.
3. Insert the fiber optic cable until it contacts the bottom of the probe.
4. Lower ferrule and gripper until snug against the probe. Hand tighten female gripper nut.
5. Open the top and slide the front face of the D10 up. Press the fiber optic ends into the holes on its front. Slide the face down to lock cables in place.

For elbow out configuration:







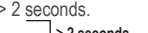

- 1.1 Replace NPT plug in "L" port with elbow adapter.





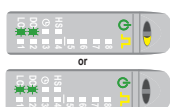



3.5 Calibrating D10 Amplifier for Fiber Optic Leak Detection

Step 1: Power On D10 Amplifier & Set "Dark Operate" Mode:

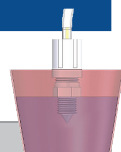
	Push Button $0.04\text{ s} \leq \text{"Click"} \leq 0.8\text{ s}$	Remote Line $0.04\text{ s} \leq T \leq 0.8\text{ s}$	Result
Access Setup Mode	Press and hold both buttons > 2 seconds. 	Double-pulse remote line  2x	<ul style="list-style-type: none"> Green Power LED turns OFF. Output LED remains active. Icons continue to display current setup. Bargraph turns OFF. 
Select Settings	Press either button until LEDs show desired settings. 	Pulse the remote line until LEDs show desired settings.  Note: Double-pulsing remote line causes setting to "back up" one step.	Sensor toggles through these setting combinations: LO - Normal Speed - No Delay (default) DO - Normal Speed - No Delay LO - High Speed - No Delay DO - High Speed - No Delay LO - Normal Speed - Delay DO - Normal Speed - Delay LO - High Speed - Delay DO - High Speed - Delay
Return to Run Mode	Press and hold both buttons > 2 seconds. 	Hold remote line low > 2 seconds.  > 2 seconds	<ul style="list-style-type: none"> Green Power LED turns ON. Sensor returns to Run mode with new settings. 






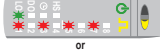

Step 2: Access "Single-Point Dark Set" Mode

	Push Button $0.04\text{ s} \leq \text{"Click"} \leq 0.8\text{ s}$	Remote Line $0.04\text{ s} \leq T \leq 0.8\text{ s}$	Result
Access Set Mode	Press and hold static button > 2 seconds. 	Single-pulse remote line  1x	<ul style="list-style-type: none"> Power LED: OFF. Output LED: ON (push button) OFF (remote line) Static LEDs: LO & DO alternately flashing  or 

Step 3: Set Sensing Condition

Set condition to "leak detection" sensing while probe tip is submerged in liquid. Then, remove the leak probe from liquid and reinserted into the "L" port. Amplifier will now signal when moisture is detected on the probe tip.



	Push Button $0.04\text{ s} \leq \text{"Click"} \leq 0.8\text{ s}$	Remote Line $0.04\text{ s} \leq T \leq 0.8\text{ s}$	Result
Set Sensing Condition	<ul style="list-style-type: none"> Present sensing condition Five-click static button  	Present sensing condition • Five-pulse remote line  5x	<ul style="list-style-type: none"> Power LED: ON. Output LED: ON (push button) OFF (remote line) Bargraph: 4 indicators flash. Sensor returns to Run mode with new settings  or  <ul style="list-style-type: none"> Power LED: ON. Output LED: ON (push button) OFF (remote line) Bargraph: #1, 3, 5, 7 flash for failure. Sensor returns to Set sensing condition.  or 





4. Ordering Instructions

Required (Default Model)

Additional Options (Blank if not needed)

PXA060	- F12	- LF0	- SX1	- TF12	
1	2	3	4	5	6 Rev

Options 1-3 are required. Leave Additional Options blank if not desired. Only add Outlet if different than Inlet.

Default options are highlighted

1. Pump Model

Standard	PXA060
Dry-Run	PXASD060

2. Check Ball Material

PTFE Check balls	blank
PFA Check balls	F

3. Inlet Fitting

Front straight only

	1/2 in.	F08
	3/4 in.	F12
	1 in.	F16
	1-1/4 in.	F20
	1/2 in.	T08
	3/4 in.	T12
	1 in.	T16
	1-1/4 in.	T20
	3/4 in.	W12
	1 in.	W16
	3/8 in.	P06
	1/2 in.	P08
	3/4 in.	P12
	1 in.	P16
	1-1/4 in.	P20
	1/2 in.	N08
	3/4 in.	N12
	1 in.	N16
	1/2 in.	S08
	3/4 in.	S12
	1 in.	S16
	1/2 in.	L08
	3/4 in.	L12
	1 in.	L16
	1-1/4 in.	L20

4. Leak Detection

No leak detection	blank
15 ft fiber optic cable with no amplifier	LF0
15 ft fiber optic cable with D10 amplifier	LF1
25 ft fiber optic cable with no amplifier	LF2
25 ft fiber optic cable with D10 amplifier	LF3
15 ft conductivity cable	LC0
25 ft conductivity cable	LC1

5. Stroke Detection

No stroke detection	blank
15 ft PNP normally open proximity switch	SX1

*** Proximity switch ordered separately.**

Proximity switch is required for operation. Standard configuration does NOT include proximity switch.

For applications requiring the NPN signal, White Knight recommends the use of a signal converter similar to Balluf part number BAE002H.



Timer mode operation requires end-of-stroke detection. Use of timer mode without stroke detection voids the warranty.

Operating the pump without the included quick exhaust valves (QEVs) voids pump warranty. Customers may use their own QEVs with the optional NPT adapter.

6. Outlet Fitting		Front	Top
Straight only. Select Top or Front.			
Same as Inlet		blank	n/a
	1/2 in.	FF08	TF08
	3/4 in.	FF12	TF12
	1 in.	FF16	TF16
	1-1/4 in.	FF20	TF20
	1/2 in.	FF08	TT08
	3/4 in.	FF12	TT12
	1 in.	FF16	TT16
	1-1/4 in.	FF20	TT20
	3/4 in.	FW12	TW12
	1 in.	FW16	TW16
	3/8 in.	FP06	TP06
	1/2 in.	FP08	TP08
	3/4 in.	FP12	TP12
	1 in.	FP16	TP16
	1-1/4 in.	FP20	TP20
	1/2 in.	FN08	TN08
	3/4 in.	FN12	TN12
	1 in.	FN16	TN16
	1/2 in.	FS08	TS08
	3/4 in.	FS12	TS12
	1 in.	FS16	TS16
	1/2 in.	FL08	TL08
	3/4 in.	FL12	TL12
	1 in.	FL16	TL16
	1-1/4 in.	FL20	TL20

Revision

No revision	blank
-------------	-------

Contact support for revision level or copy exact code activation details. Configured part numbers are not Copy Exact Part Numbers. support@wkfluidhandling.com





5. Pump Service

Pumps fully rebuilt by White Knight, certified rebuilders, or technicians certified by White Knight receive full warranty renewal. Details below.

White Knight Rebuilds

Request factory rebuilds by web form at:
<https://wkfluidhandling.com/support/rma/>.
An RMA# will be provided after processing.

**Customers must follow decontamination instructions in Section 4.4 when returning a pump to White Knight.*

Certified Rebuilders

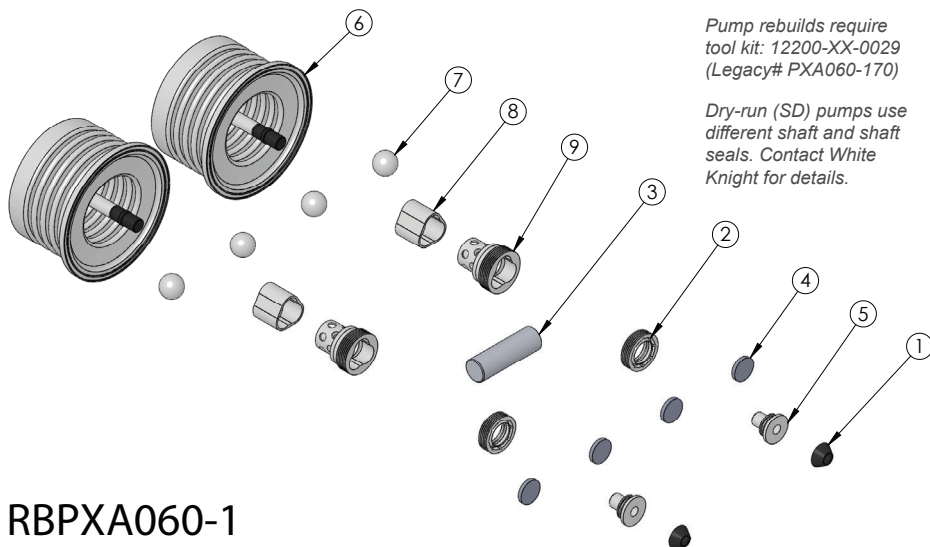
White Knight's global network of certified rebuilders expedite rebuild turn-around time and minimize shipping costs. Find certified rebuilders at:
<https://wkfluidhandling.com/rebuilders/>

Rebuild Pump as Certified Technician

White Knight offers trainings to certify technicians to rebuild pumps. Technicians who pass the training are issued a two-year certification. During the two years, parts in pumps rebuilt by the technician receive a full warranty. See: <https://wkfluidhandling.com/virtual-rebuilds/>

5.1 Rebuild Kits & Parts

Rebuild kit for PXA060 is RBPXA060-1. Rebuild kit for PXASD060 is RBPXASD060-1 (labor not included). To request rebuilds by White Knight, use RBPXA060-5 or RBPXASD060-5, respectively (labor included).



Pump rebuilds require tool kit: 12200-XX-0029 (Legacy# PXA060-170)

Dry-run (SD) pumps use different shaft and shaft seals. Contact White Knight for details.

RBPXA060-1

ITEM NO.	PART NUMBER	DESCRIPTION	QTY.
1	3200-VI-0001	DIAPHRAGM, Ø.782	2
2	5143-MP-0012	SEAL, SHAFT, A&H, 60L	2
3	5144-PF-0023	SHAFT, SOLID, PFA, 60L	1
4	6140-FP-0002	BAFFLE, 800"	4
5	6150-UH-0001	SEAT, QEV EXHAUST, 30L & 60L	2
6	14300-MP-0018	BELLOWS ASSEMBLY	2
7	4100-MP-0001	CHECK BALL-3/4"	4
8	4135-MP-0001	BOTTOM CHECK SEAT- 10GPM HIGH FLOW	2
9	4142-MP-0001	TOP CHECK CAGE-10GPM HIGH FLOW	2





5.2 Return Pump for Service

Follow decontamination instructions when returning a pump for service.

DO NOT REMOVE PAGE FROM MANUAL.

Copy page from manual or download at <https://wkfluidhandling.com/support/rma/>.

Decontamination Instructions

PRINT COMPLETED DECONTAMINATION CERTIFICATION. IT MUST BE INCLUDED IN YOUR RMA SHIPMENT.

White Knight products are designed for use with caustic and otherwise dangerous liquids. Handle every product as if it contains dangerous chemicals whether or not it actually does.

- Only those with adequate safety training should attempt to handle used pumps.
- Wear adequate safety gear appropriate for chemicals that have been in the pump.
- Review relevant Material Safety Data Sheets (MSDS) before handling the pump.
- Review emergency numbers for use in event of an accident.
- Prepare Ph papers, showers, antidotes, clean-up equipment, neutralizers, and other safety devices used to detect, neutralize or minimize effects of chemicals described in appropriate MSDS documents.

Rinse with DI Water

Circulate DI water through pump for twenty minutes before disassembly and/or double bagging for shipment. If pump is nonfunctional, force DI water from inlet through outlet for 40 minutes before shipment preparations.

Remove Pump from Station:

1. Disconnect liquid tubing connectors from front of pump (opposite shuttle valve).
2. Plug NPT fittings with PTFE plug, Flare fittings with flare nose cover and cap, or other plug or cap as recommended by connector supplier.
3. Disconnect air supply tubing from face of shuttle valve.
4. Loosen mount screw from base plate. (Note: do not remove screw from base plate).
5. Remove base plate using proper tool for the fastening devices (e.g. Allen wrench or screw driver).
Note: Base plate may stay if needed for replacement pump to be used.
6. Return all removed parts to the pump.

Return Pump to White Knight:

1. Rinse pump with DI water as described above after removing it from its station.
2. Drain remaining DI water from the pump inlet and outlet liquid tubing connectors.
3. Plug liquid outlets as described in the Remove Pump from Station section above.
4. Dry the pump, double bag it, and seal it in thick polyethylene bags.
5. Return the pump to its original packaging.
6. Include MSDS for the chemical that the pump was handling in the box with the pump.
7. Obtain RMA number from White Knight and write it on the outside of the box.
8. Ship to White Knight following all rules, regulations and laws regarding shipment of dangerous materials. Ship freight pre-paid. No collect shipments will be accepted. Unauthorized use of White Knight shipping accounts will result in the adding of freight to the bill in addition to a service charge.

Include All Pump Components:

Pumps returned to White Knight for evaluation, service or repair must be complete with all components, including but not limited to base plate, mount screws, tubing connectors, tubing connector caps, flare noses, shuttle valves, mufflers, and tubing. Missing parts will be added to the pump and charged to the customer.





DO NOT REMOVE PAGE FROM MANUAL.

Copy page from manual or download at <https://wkfluidhandling.com/support/rma/>.

Decontamination Certification

COMPLETE AND PRINT THIS FORM. IT MUST BE INCLUDED IN YOUR RMA SHIPMENT.

I, the undersigned employee of _____, certify that all decontamination and safety procedures described in Decontamination Instructions section have been followed for return of product below.

RMA#: _____

(We cannot process returns without an RMA number.)

Serial#: _____

(We cannot process returns without a product serial number.)

Metal Exposure:

(Check all that apply. Write in other metals if necessary.)

Product was used in a Metal Process. ☐ Yes ☐ No

Product was used in a Copper Metal Process. ☐ Yes ☐ No

Product was used with:

☐ Aluminum ☐ Cobalt ☐ Gold ☐ Lead ☐ Nickel ☐ Platinum ☐ Silver ☐ Tin ☐ Titanium
☐ Tungsten ☐ Zinc ☐ Other: _____

Chemical Exposure:

(Check all that apply. Write in other chemicals if necessary.)

☐ Product was NOT used in chemicals (DI Water only).

☐ Product was used in chemicals.

☐ Ammonia ☐ Ammonium Hydroxide ☐ Hydrochloric Acid ☐ Hydrofluoric Acid ☐ Hydrogen Peroxide ☐ IPA
☐ Nitric Acid ☐ Phosphoric Acid ☐ Sulfuric Acid ☐ Other: _____

Shipping Information:

Please indicate metal processes to which the product has been exposed by clearly and conspicuously labeling the outside of the return package with the metal.

Products exposed to Metal Processes must be sent to the following address:

White Knight Fluid Handling
187 East 670 South, Suite B
Kamas, UT 84036

Products NOT exposed to Metal Processes must be sent to the following address:

White Knight Fluid Handling
187 East 670 South, Suite C
Kamas, UT 84036

Print Name: _____

Signature: _____

Date: _____





6. Warranty

White Knight follows strict manufacturing, assembly and testing procedures to ensure consistency and reliability.

White Knight warrants PXA060 pumps and components are free from defects in materials and workmanship for two years from our shipment date or your installation date if provided within 90 days of shipment from our facility.

Failures due to normal wear, misuse, abuse or unauthorized disassembly nullify this warranty.

White Knight does not guarantee the suitability of products for specific applications. White Knight is not liable for any damage or expense resulting from use or misuse of its products in any application. Responsibility is limited solely to repair or replacement of defective products or components.

Prior written, faxed or emailed approval must be obtained from White Knight before returning any product or component for warranty consideration. All determinations regarding cause of failure are made by White Knight, and all decisions regarding warranty fulfillment or nullification are made by White Knight.

THE FOREGOING WARRANTY IS EXCLUSIVE AND IN LIEU OF ALL OTHER WARRANTIES EXPRESSED OR IMPLIED, INCLUDING ANY GUARANTEE OF SUITABILITY FOR ANY PURPOSE. NO VARIATIONS OF THIS WARRANTY SHALL BE HONORED NOR CONSIDERED LEGALLY BINDING, EXCEPT WRITTEN AGREEMENTS SIGNED BY THE CEO OF WHITE KNIGHT FLUID HANDLING.

Accessories

See ordering instructions or contact us for details.

Stroke Detection

- Fiber Optic stroke detection with or without sensor
- Solid state pressure switch
- Solid state dual pressure switch

Leak Detection

- Fiber Optic leak detection with or without sensor
- Conductivity leak detection

CPT-1

- Control/monitor run mode and flow rate.

Catcher™ Pre-Filters

- In-line and pump-mounted options
- Large through holes to avoid loading
- Filter may be removed without removing the Catcher™ from the pump or the line.
- Pumps damaged by passing solids that use a Catcher™ are repaired as in warranty.

Filter Housing

- 100% non-metallic
- Allows for filter changing without disconnecting the inlet/outlet lines
- Rated for temperatures up to 210°C
- Install with industry standard connections
- Designed to allow for thermal cycling
- Upright and inverted installation options

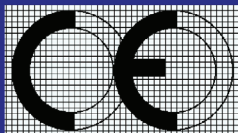
Quick Exhaust Valves

- Allows for immediate escape of exhaust air reducing pulsation and exposure of solenoid valve to corrosive fumes
- In-line and pump-mounted options
- UHMW-PE design
- Comes standard with a one-year warranty

Pulse Dampeners

- Uses same CDA as supplied to pump
- In-line and pump-mounted options
- Sizes available for all PXA Series pumps
- Self-adjusting, Auto-Level Valve is regulated by liquid line pressure





Barclay-Phelps

CE MARKING SPECIALISTS

Hoi Yuen Road, Kwun Tong, Kowloon, Hong Kong

CERTIFICATE & DECLARATION OF CONFORMITY FOR CE MARKING

Company contact details:

White Knight Fluid Handling Inc.
187 E. 670 S., Kamas, Utah, 84036, USA

White Knight Fluid Handling Inc. declares that their:

Bellows Pump Line

PSA030, PSA060, PSA140, PSH030, PSH060, PSH140, PSU030, PSU060, PSU140, PSA015, PSR050, PSR025, PFA030, PFA060, PFA140, PFH030, PFH060, PFH140, PFU030, PFU060, PFU140, PXA030, PXA060, PXA140, PXH030, PXH060, PXH140, PXU030, PXU060, PXU140, PFA015, LHA015, LHA030, LHA070

Diaphragm Pump Line (Non Conductive)

PSD04TE, PSD06TE, PSD08TE, PSD16TE, PSD24TE, PSD04UH, PSD06UH, PSD08UH, PSD16UH, PSD24UH, PSB100

Diaphragm Pump Line (Conductive)

PSD04TC, PSD06TC, PSD08TC, PSD16TC, PSD24TC, PSD04UC, PSD06UC, PSD08UC, PSD16UC, PSD24UC

Legacy Pump Line

PLS30, PLS60, PLS120, PLX30, PLX60, PLX120, PX30, PX60, PX120, PLF30, PLF60, PLF120

Metering Pumps

PPM100, PEM100, PEM050

Plastic Pumps

PHC40-2, PPMC300, PPMA

TPA07 Pressure Transducer

are classified within the following EU Directives as applicable:

Machinery Directive 2006/42/EC

Low Voltage Directive 2014/35/EU

Electromagnetic Compatibility Directive 2014/30/EU

RoHS 2 Directive 2011/65/EU

and further conform with the following EU Harmonized Standards as applicable:

EN 809:1998+A1:2009 EN 60204-1:2006 + A1:2009 EN 61000-6-2:2005 EN 61000-6-4:2007+A1:2011

Dated: 16 January 2017

Position of signatory: Product Manager Name of Signatory: Cory Ammon Simmons

Signed below: on behalf of White Knight Fluid Handling Inc.





White Knight Support

187 E. 670 S.
Kamas, UT 84036

Phone: 435.783.6040
Toll Free: 888.796.2476
Fax: 435.783.6128

support@wkfluidhandling.com
<https://wkfluidhandling.com/support/>



Part No. 18200-LM-0009



Copyright © 2023 White Knight Fluid Handling | A Graco company
P: 435.783.6040 | support@wkfluidhandling.com | <https://wkfluidhandling.com>

Version 2.2.5 | 5 Dec 2023
Subject to change without notice