



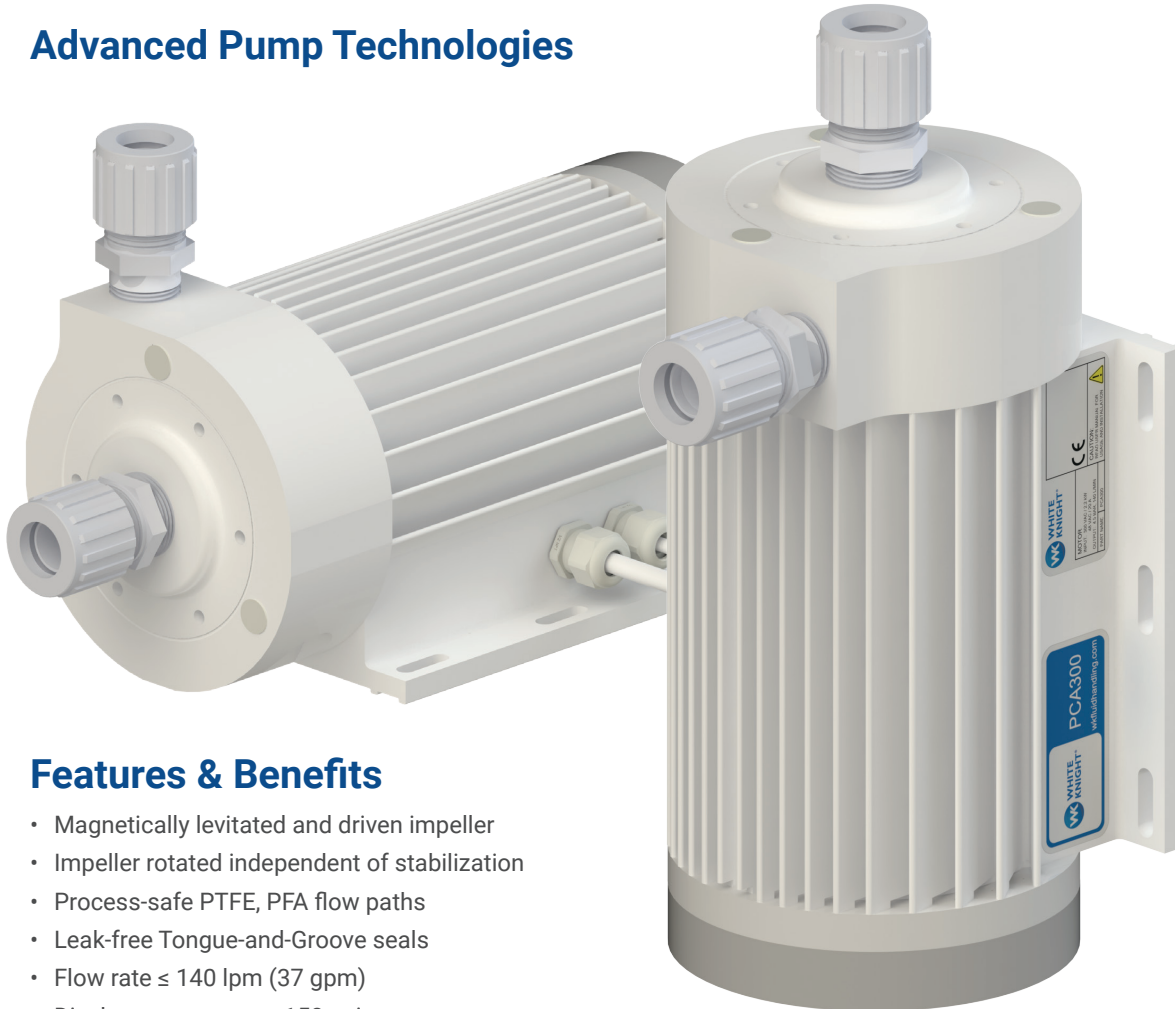
**WHITE
KNIGHT®**
.....engineer approved™

PCA300 CENTRIFUGAL PUMPS

High-Purity Centrifugal Pumps for Smooth, Continuous Flow

PCA300 pumps feature a magnetically levitated impeller that is rotated independent of its stabilization functions. The pump offers continuous, steady flow without pressure pulsation. Its process-safe PTFE/PFA flow path is ideal for ultrapure wet process applications. They are precisely controlled by electronically regulating the impeller speed.

Advanced Pump Technologies



Industries

Semiconductor,
Solar, Displays,
LED, Electronics,
Aerospace

Applications

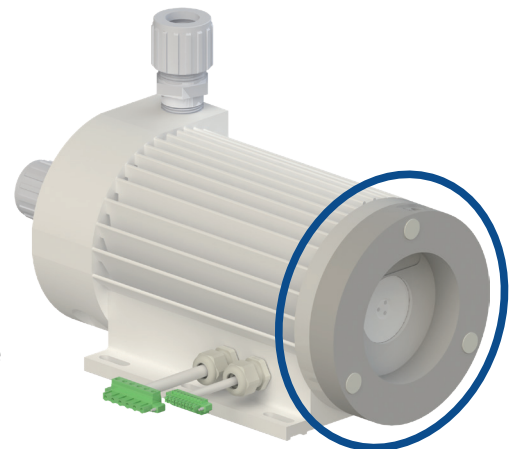
DI Water, Chemical
Delivery, Circulation,
Processing, Slurry

Features & Benefits

- Magnetically levitated and driven impeller
- Impeller rotated independent of stabilization
- Process-safe PTFE, PFA flow paths
- Leak-free Tongue-and-Groove seals
- Flow rate ≤ 140 lpm (37 gpm)
- Discharge pressure ≤ 150 psi
- Differential pressure ≤ 69 psi
- Low particle generation and low-shear improves process yields and increases filter life in CMP recirculation
- No valves, bearings, rotating seals nor mechanically contacting parts
- Reduced wear increases uptime and minimizes maintenance costs
- FEP-coated cables
- Various fitting options

Air Cooling

Cooling module enables continuous operation throughout the flow curve with fluid temperatures up to 90°C. Use of the module requires 8 SCFM of air at 30 psi air supply.



<https://wkfluid.com/pca>

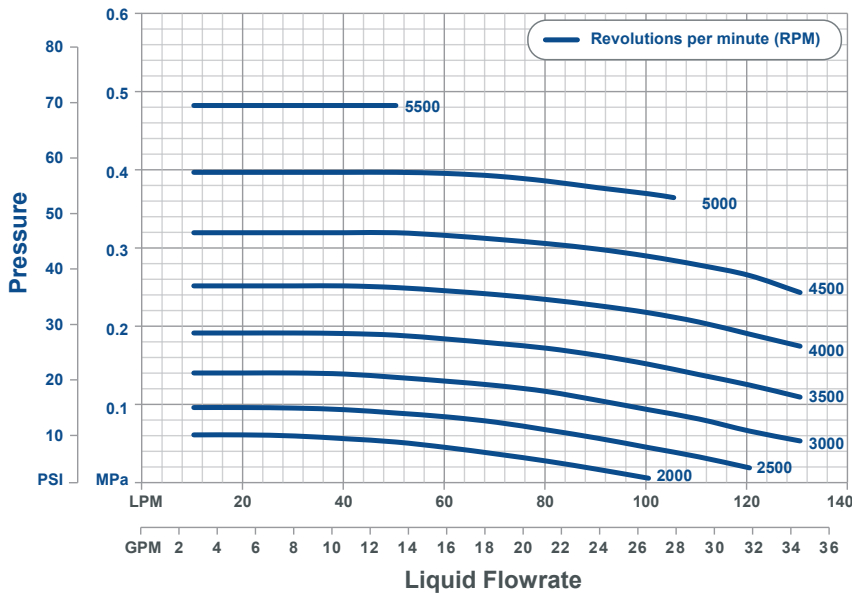


Copyright © 2022 White Knight Fluid Handling | A Graco company
P: 435.783.6040 | info@wkfluidhandling.com | <https://wkfluidhandling.com>

Version: 1.0.1 | Published: 2 Nov 2022 | P. 1
Specifications subject to change without notice

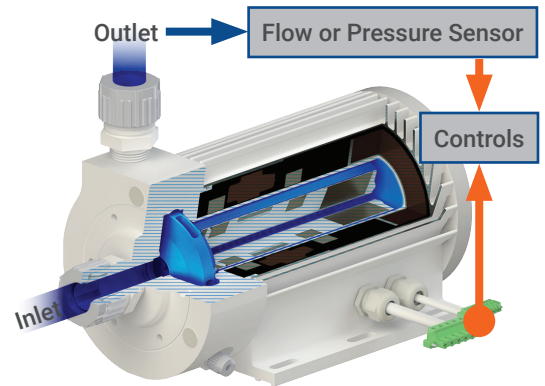


Performance

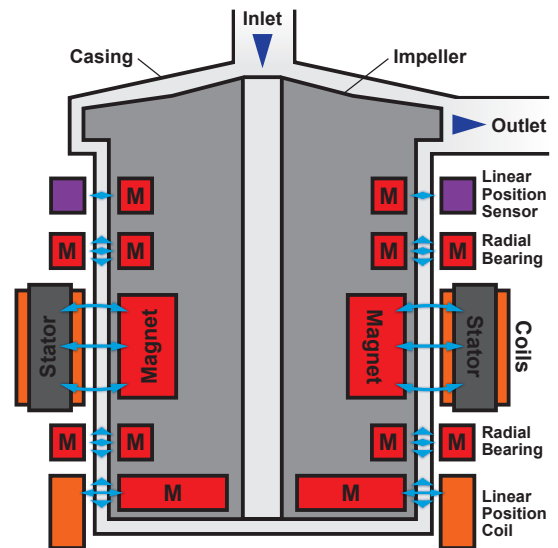
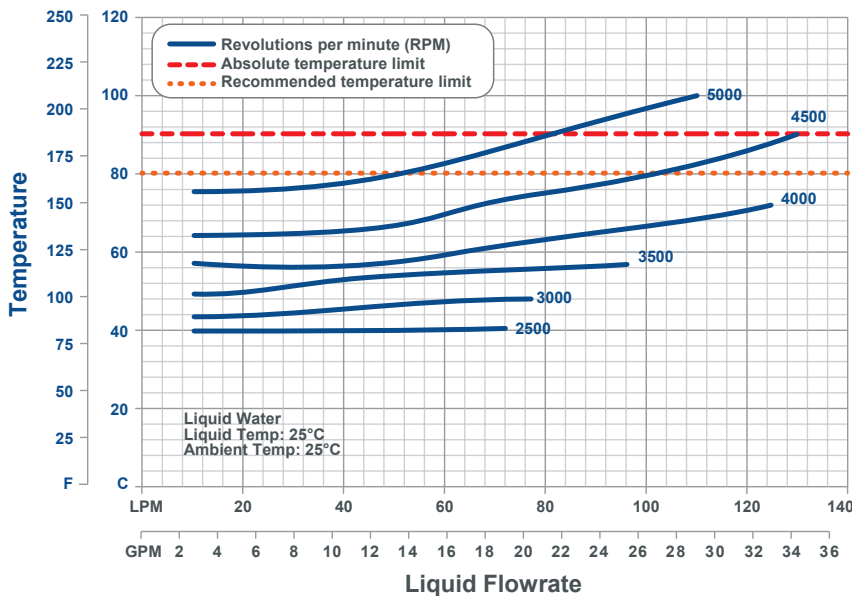


Operation

Fluid enters through the impeller eye and is accelerated by centrifugal force created by the impeller rotation. The impeller is rotated with magnetic coupling and levitated by a magnetic bearing system. These magnetic systems prolong pump life as there are no mechanical couplings or seals to wear and fail.



Motor Temperature Limitations

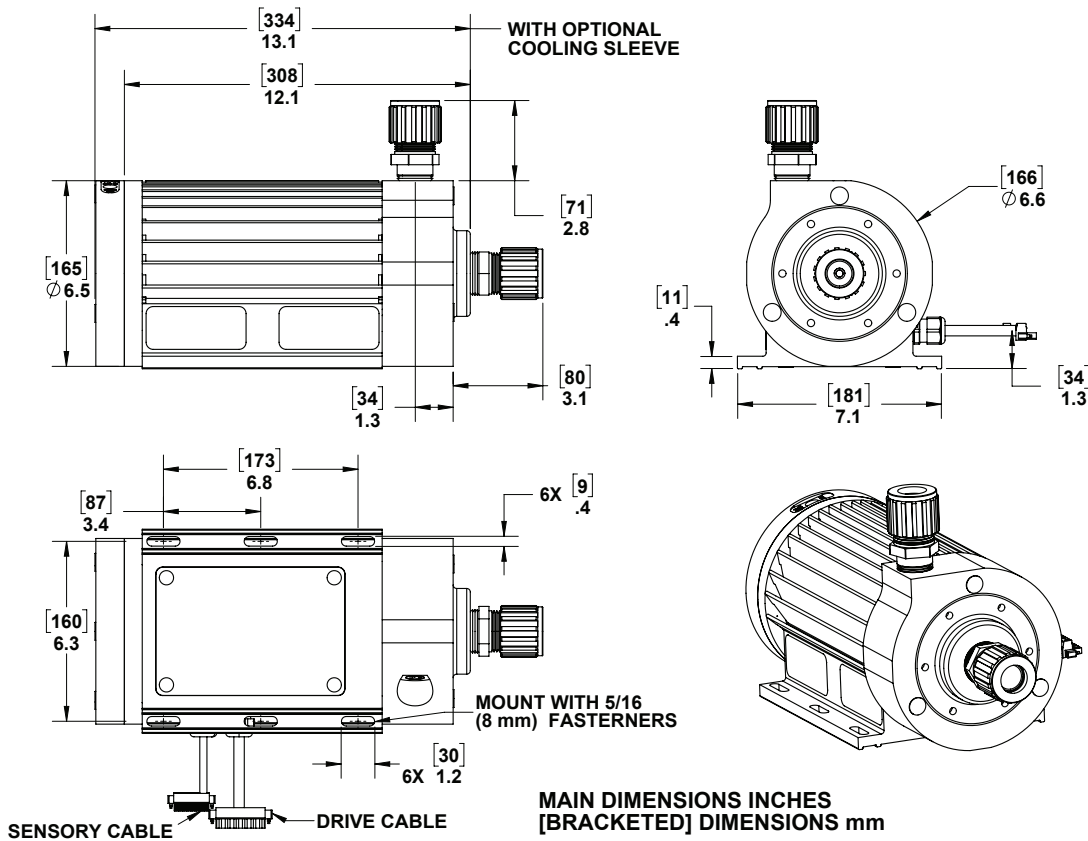


Specifications

Model	PCA300
Max Flow	≤ 140 lpm (37 gpm)
Differential Pressures	≤ 4.75 Bar (69 psi)
Input Rating	200-240 VAC 50/60Hz 1ϕ 16A
Output Rating	0-264VAC 0-1kHz 3ϕ 0-15A 2.5kW/3.4HP
Weight	45 lb (20.4 kg)
Fluid Path Materials	PTFE/PFA
Non-Fluid Path Materials	ETFE Coated Epoxy Filled Motor, Neodymium Magnets, Stainless Steel, Polypropylene, White PVC

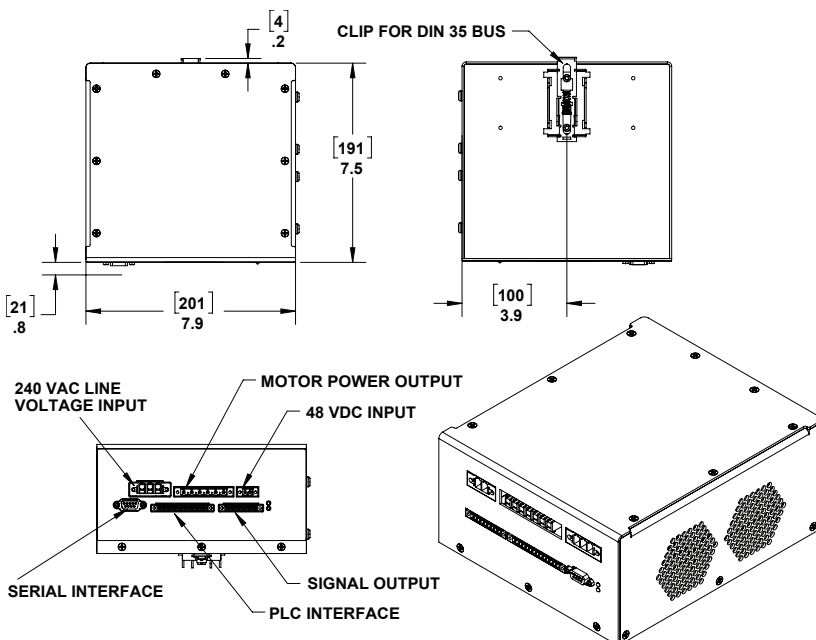
PCA300 Dimensions

[mm] inches



Controller Dimensions

[mm] inches



Power Supply Dimensions

[mm] inches

