



**HEATEFLEX**<sup>®</sup>  
by White Knight

# POSEIDON™ DIW HEATERS

## Poseidon™ Stainless Steel Ultrapure DIW Heating Systems

Poseidon™ systems are sanitary designs that offer stainless steel flow path for deionized water (DIW). These complete turnkey systems reduce particle entrapment and provide clean solutions for your high-purity fluid heating applications. Complete with multiple heating modules and a fully integrated control system, this heater provides precise temperature control while maintaining process purity. Poseidon™ systems can heat fluids throughout a facility or at Point-of-Use.

### Features & Benefits

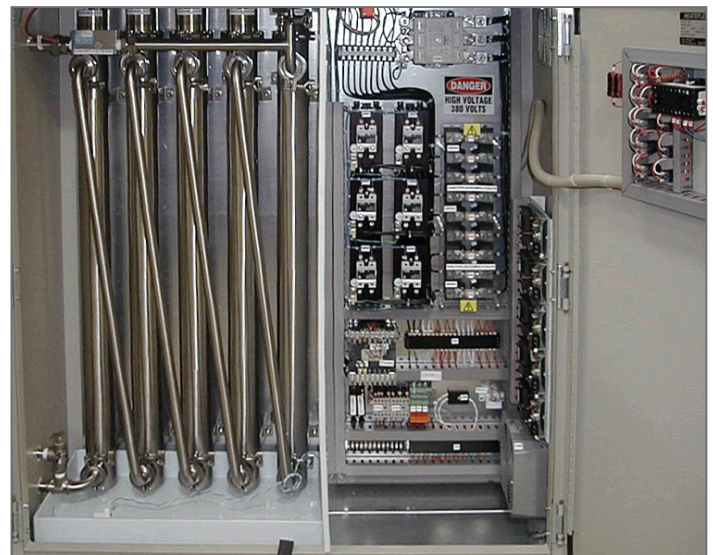
- Ultrapure 100% 316L stainless steel wetted surfaces
- 32µ in roughness average finish
- Sanitary fittings reduces particle entrapment
- Precise temperature control
- Up to 60 psig at 95°C operating pressures
- Plug-&-Play controls in NEMA-rated enclosure are ready for use after connecting facility plumbing and electrical
- Fully integrated PID control maintains ±1°C accuracy
- Electric heating elements provide high-temperature efficiency with a fast temperature response time
- Vertical (SSDI) or horizontal (SPDI) orientation with heaters and controls in one or two enclosures, respectively. SPDI offers gravity draining capability.
- Output ranges of 24-144kW and 208-480 VAC (3-phase)

### Safety Features

- CE and SEMI S2-0200 compliance
- Internal heating elements built to UL 499 listed
- Over-temperature thermocouple regulates heater temperature by limiting amount of heat produced
- Process thermocouple ensures fluid temperature is accurately maintained
- Flow interlock ensures the heaters will not activate without meeting the minimum flow requirement
- Ground wire protection for both user and heater

### Optional Features

- Communications for controller and external interface
- System drainage with valves and N2 gravity push



### Dimensions

kW	Voltage	SSDI H x W x D	SPDI** H x W x D
24	208-480	46 x 32 x 12	30 x 48 x 10
48	208-480	48 x 40 x 12	30 x 48 x 10
72	208-480	48 x 40 x 12	30 x 48 x 10
96	208-480	48 x 48 x 12	30 x 48 x 10
96	380-480	48 x 40 x 12	30 x 48 x 10
120	380-480	48 x 48 x 15	36 x 48 x 12
144	380-480	48 x 40 x 12	36 x 48 x 12

\*Controls in separate enclosure for both models.  
\*\*Electrical cabinet size varies by kW and voltage.

### Specifications

<b>Power</b>	24 - 144 kW
<b>Voltage*</b>	200 - 480 VAC, 3-phase
<b>Fluid path materials</b>	316L SS, electropolished
<b>input/ output</b>	1/2-in tube options available
<b>Max Temp</b>	95°C
<b>Pressure</b>	60 psig at 95°C
<b>Standard Flow</b>	20 gpm (76 lpm)

\* Dependent on power.

